

Blanking Dimensions

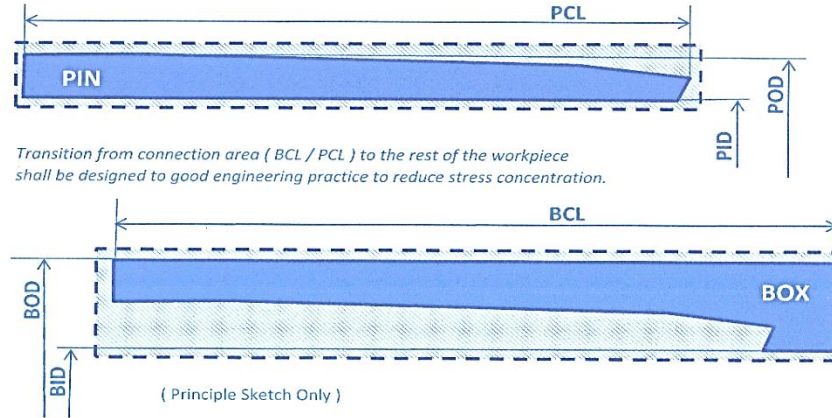
voestalpine Tubulars proprietary connection
VExplorer®

VExplorer®

Blanking Dimensions: Dimensions of voestalpine Tubulars proprietary connections to be considered for the design of accessories

Rev.0:

VExplorer®



BOD* BOX OUTSIDE DIAMETER
BID* BOX INSIDE DIAMETER
BCL BOX CONNECTION LENGTH

POD* PIN OUTSIDE DIAMETER
PID* PIN INSIDE DIAMETER
PCL PIN CONNECTION LENGTH

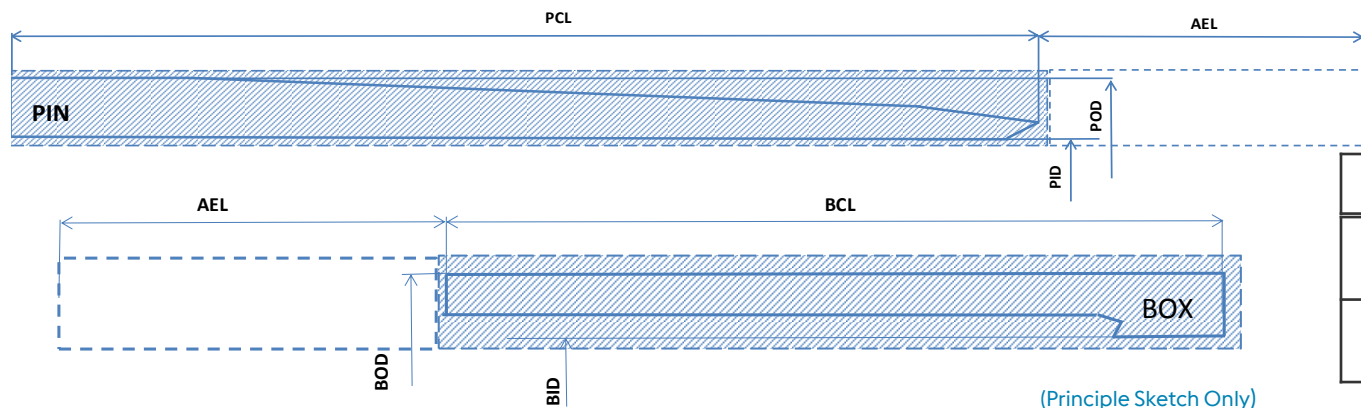
* Minimum and maximum dimensions after final machining of the connection.
Reasonable machining allowances shall be agreed with the licensed threader of the connection by considering type of blank (already pre-machined or raw) and/or shape of the whole workpiece.

VExplorer®

PIPE DESIGNATION		CASING					
		PIN			BOX		
O.D	lb/ft	POD [mm]	PID [mm]	PCL [mm]	BOD [mm]	BID [mm]	BCL [mm]
		MIN.	MAX.	MIN.	MIN.	MAX.	MIN.
5 1/2"	20,00	139,70	119,77	124,80	160,02	119,77	104,80
	23,00		117,03		160,02	117,03	
6"	24,50	152,40	130,49	127,80	170,00	130,49	107,80

Recut lengths

Recut lengths



AEL (Min)	
≥ 5" PIN	58 mm
≥ 5" BOX	62 mm

BOD* BOX OUTSIDE DIAMETER
 BID* BOX INSIDE DIAMETER
 BCL BOX CONNECTION LENGTH
 AEL Minimum Additional excess length for one recut

POD* PIN OUTSIDE DIAMETER
 PID* PIN INSIDE DIAMETER
 PCL PIN CONNECTION LENGTH

* Minimum and maximum dimensions after final machining of the connection.
 Reasonable machining allowances shall be agreed with the licensed threader of the connection by considering type of blank (already pre-machined or raw) and/or shape of the whole workpiece.