

HEALTH, SAFETY and ENVIRONMENT REPORT 2025

voestalpine Tubulars GmbH & Co KG

voestalpine Tubulars GmbH & Co KG
Alpinestraße 17
8652 Kindberg-Aumühl

The current Health, Safety and Environment Report of the company voestalpine Tubulars GmbH & Co KG, with location in Kindberg, specifies the company's safety, environmental measures and statistics for the year 2025.

Management Policy

Our organization has committed itself to manufacturing high quality products and delivering services which meet or exceed customer requirements and satisfy applicable, internationally recognized standards and specifications*. We achieve customer satisfaction through integrity and by honoring our commitments, and thus support our customers in achieving their goals and objectives.

We ensure the future success and sustainability of our business through the efficient use of resources; goal-oriented, continuous improvement; protection of the environment; and compliance with all applicable laws – **all, while ensuring the highest possible level of safety for our employees.**

We successfully achieve these goals through four key areas: quality, safety, environment, energy conservation (efficiency), asset management and information security.

Quality means to us:

- Flawless products and services
- Customer satisfaction through customer orientation and fulfilment of customer requirements
- Flexibility and reliable delivery

Safety and health protection means to us:

- Technical: safe work places, working equipment and installations, appropriate protective equipment
- Organization: creation of awareness, ongoing safety programs and trainings
- Behavior: safe, and role model behavior at all levels
- Health promotion

Environment protection means to us:

- Conservation of resources
- Minimization of emissions and avoidance of impact on the environment
- Continual improvement of the environmental performance

Energy management means to us:

- Increase in energy efficiency – reduction of energy costs
- Use of renewable energy
- Recycling management and sustainability

Asset management means to us:

- Cost minimization of assets for the whole life cycle
- High availability of the asset portfolio
- Highly trained employees for the installation and maintenance of assets

Information security means to us:

- High availability and reliability of the total IT infrastructure
- Risk minimization through the proper use of state-of-the-art IT
- Appropriate qualification of the IT experts for the use of hardware and software components
- Warranty of confidentiality and integrity of data and information

In terms of a double materiality analysis, the relevance of climate change is determined for all topics of the integrated Management system and the expectations and requirements of interested parties for the various aspects of the management systems with regard to climate change are determined.

We ensure the effectiveness of our Management System through excellent qualifications, a high level of personal responsibility, and the extraordinary commitment of all employees, as well as by making all necessary resources available.

The principles of the management systems apply to the entire Kindberg site of voestalpine Tubulars GmbH & Co KG as well as to all relevant processes along the supply chain of our products and for externally provided services.

* ISO 9001, API Specification Q1, ISO 14001, ISO 27001, ISO 45001, ISO 50001, ISO 55001

Accident Statistics 2025

Accident-Indices:

In the accident statistics, five key accident indicators are evaluated. The following key accident indicators relate to wage-earners only.

*In the year 2025,
1,470,394 production hours
were performed in the
Kindberg plant.*

*The monthly average, of
voestalpine Tubulars employed:
927 blue collar workers.*

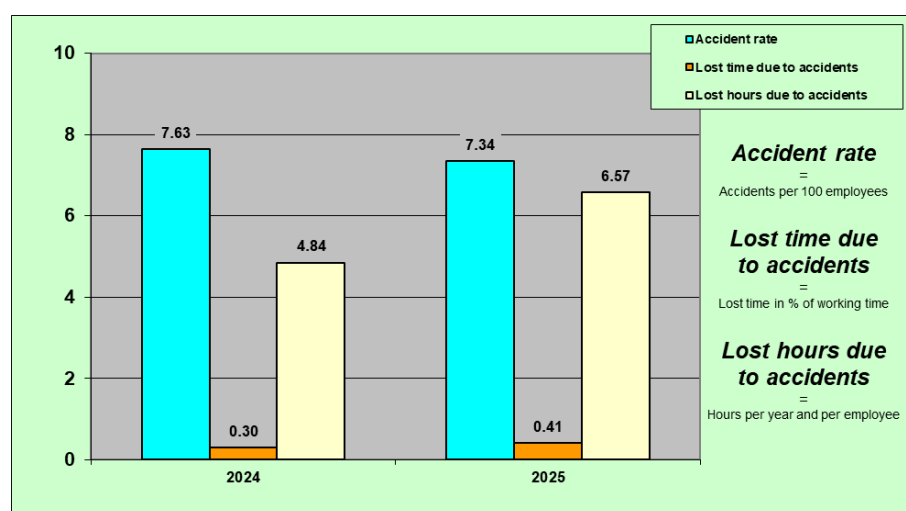
		2024	2025
Accident rate	Accidents per 100 employees	7.63	7.34
Frequency of accidents	Accidents per 1 million hours	47.41	46.25
Severity of accidents	Lost time per accident	63.37	89.55
Lost time due to accidents	Lost time in % of working time	0.30	0.41
Lost hours due to accidents	per year and per employee	4.84	6.57

Accident rate – Lost time due to accidents – Lost hours due to accidents:

*The accident rate lies at
7.34 accidents per
100 employees in 2025.*

*The working hours lost due
to accidents at work
amounted to 0.41% of the
total hours worked
in 2025.*

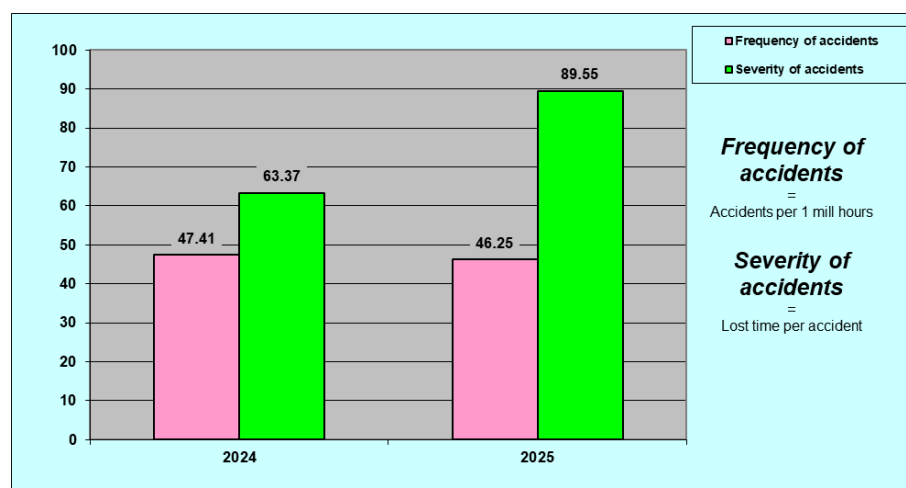
*The working hours lost due
to accidents at work were
on average 6.57 hours per
year and employee in 2025.*



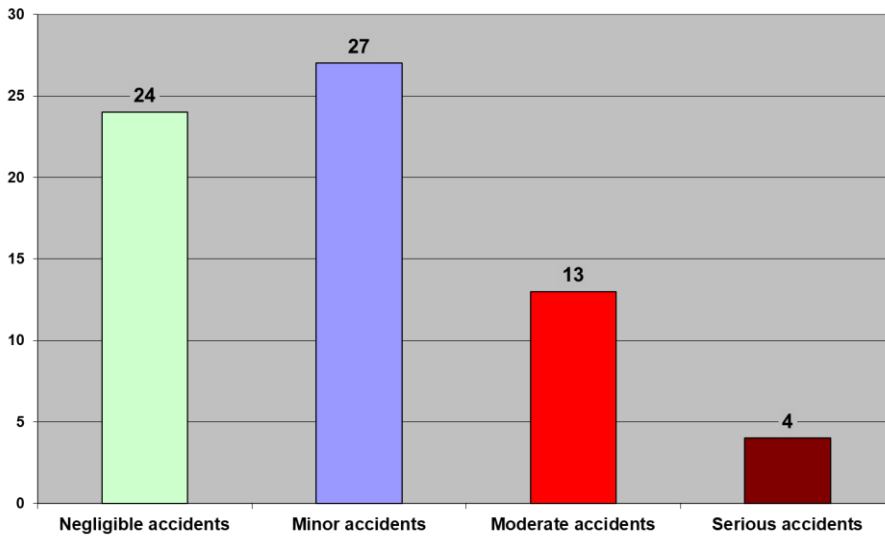
Frequency of accidents – Severity of accidents:

*The frequency of accidents
amounted to
46.25 accidents
per 1 million working
hours in 2025.*

*The average working
time lost per accident
(accident severity)
amounted to
89.55 hours in 2025.*



Industrial accidents 2025, according to the number of working days missed by injured employees:



Negligible accidents:
up to 3 days

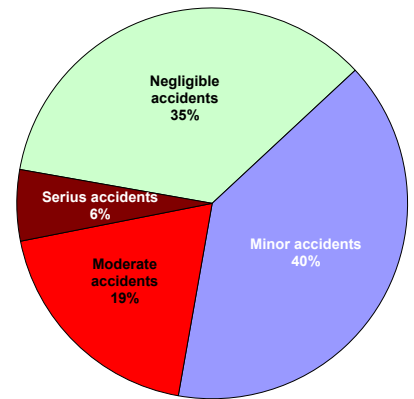
Minor accidents:
4 to 19 days

Moderate accidents:
20 to 45 days

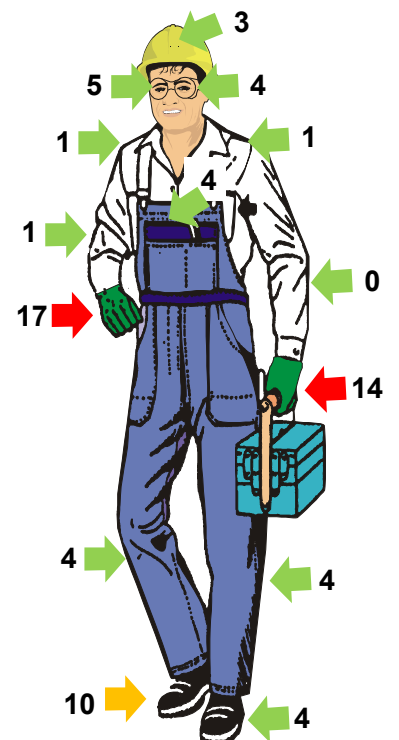
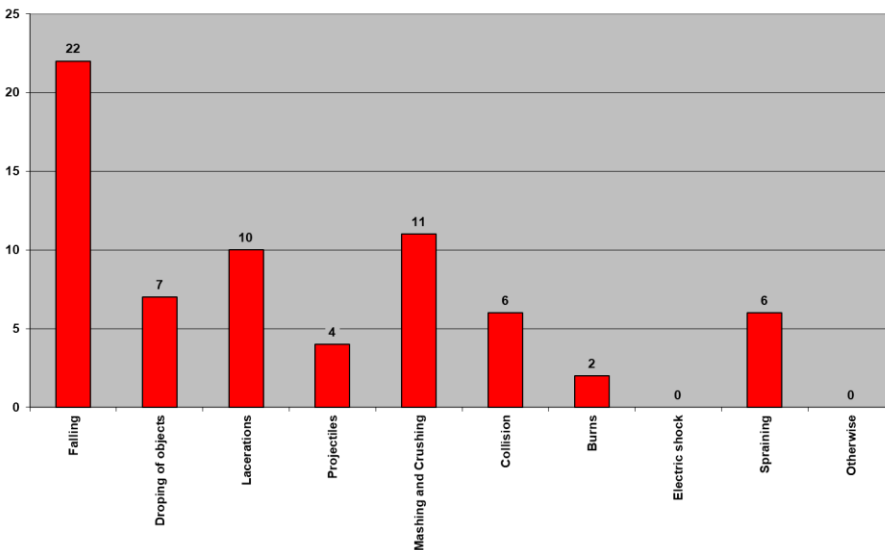
Serious accidents:
more than 45 days

In 2025, a total of 68 accidents at work were reported, of which 24 were negligible, 27 minor, 13 moderate and 4 were serious accidents.

Nearly 40% of the accidents were 'minor accidents' with a related sick leave duration of between 4 to 19 days.



Causes of accidents and injuries classified under parts of the body 2025:



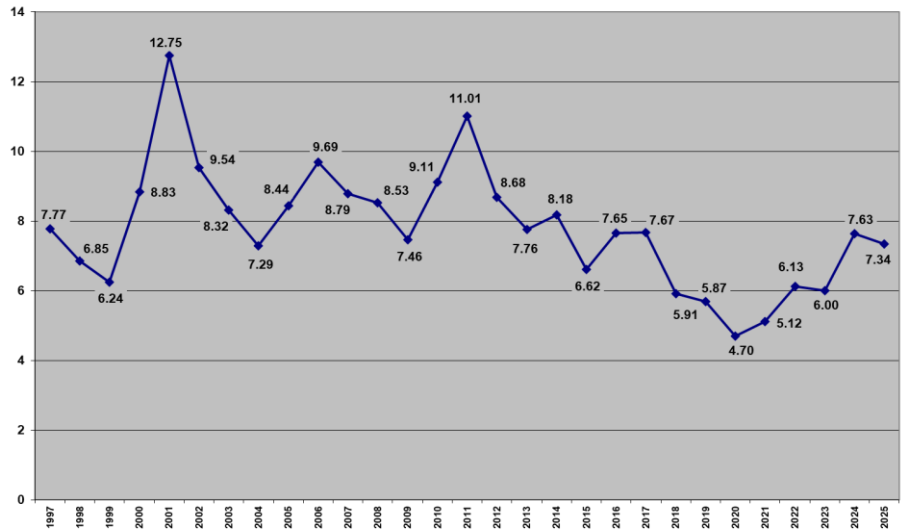
When analysing the causes of accidents, 22 accidents were caused by falling and 11 of the reported accidents relate to persons injured by mashing or crushing.

As regards injured parts of the body, the highest percentage concerned damage to hands (31 accidents), followed by 14 accidents resulting in injuries to the feet.

Trends of Accident Indices:

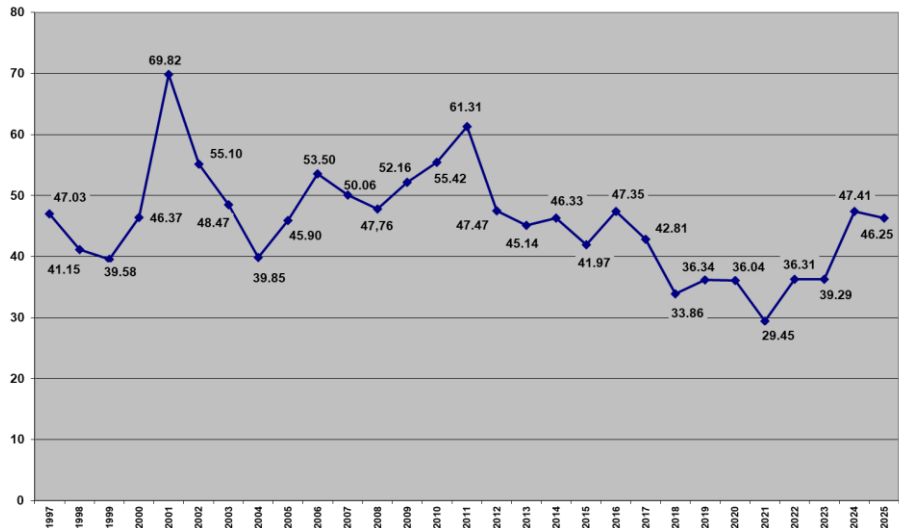
ACCIDENT RATE

Compared to 2024, the accident rate in 2025 decreased by 3.80%.



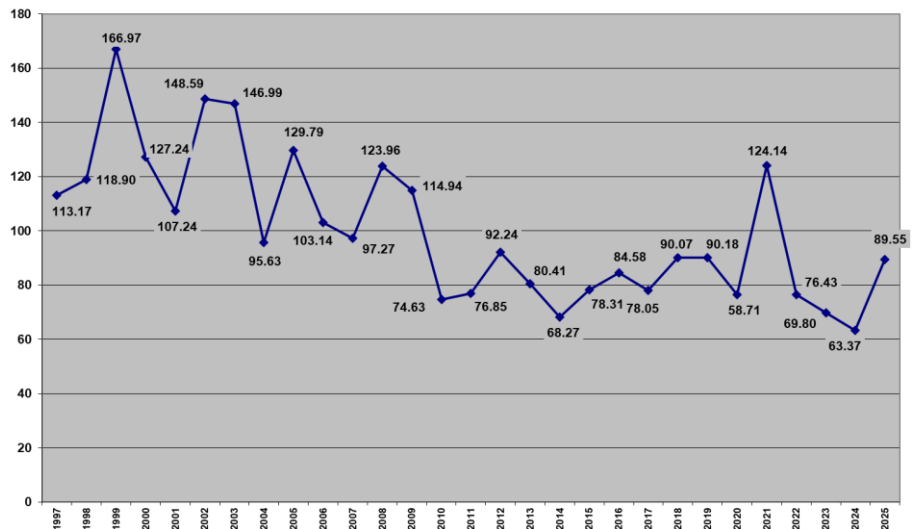
FREQUENCY OF ACCIDENTS

Compared to 2024, the frequency of accidents in 2025 decreased by 2.45%.



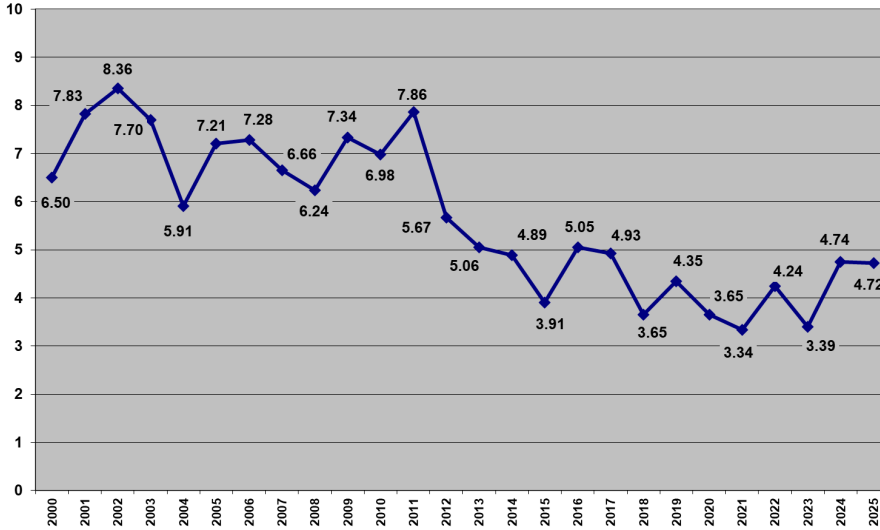
SEVERITY OF ACCIDENTS

Compared to 2024, the lost time due to accidents in 2025 increased by 41.31%.



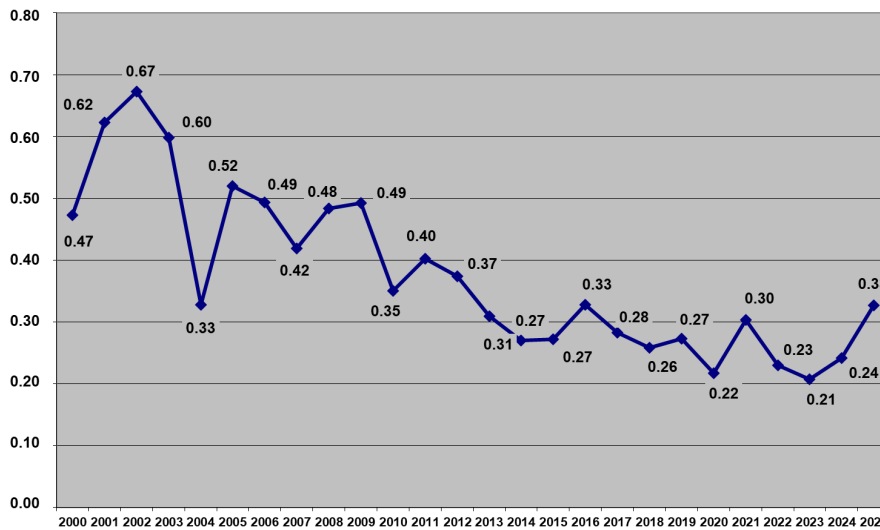
International Accident Indices:

TRIR and LTIF illustrated in international accident statistics.



TRIR
Total Recordable
Incident Rate
↓
Ratio of accidents with
mandatory reporting

TRIR (2025) = 4.72



LTIF
Lost Time Injury
Frequency
↓
Ratio of total hours lost
to accidents at work to
hours worked

LTIF (2025) = 0.33%



Environmental Balance Sheet 2025

The following table shows a summary of all environmental facts of voestalpine Tubulars from the Input-Output-Analysis (Material and Energy Balance Sheet) for the year 2025.

MATERIAL and ENERGY BALANCE 2025			
Input:		Output:	
Circulating materials (input in t) 327,402.382		Products and packaging (t) 291,748.188	
Raw materials (billets)	324,117.000	Products (steel pipes)	289,150.697
Product packaging	1,364.782	Product packaging	1,364.782
Couplings	1,232.709	Couplings	1,232.709
Auxiliary/Operating supplies	687.891		
		Waste, valuable substances, existing substances (t) 52,592.752	
		Existing substances	103.033
		Valuable substances	46,898.188
		Non-hazardous waste	328.448
		Non-hazardous waste (extra projects)	3,288.848
		Hazardous waste	1,974.235
Gas (input in m ³)		Waste water (output in m ³) 2,745,823	
Industrial gas / test gas	716,767.119	Sanitary water (indirect feed)	10,537
		Process waste water (indirect feed)	599
		Process waste water	2,734,687
Water (input in m ³) 2,805,329		Waste air (emissions in t) 59,730.566	
Drinking/washing water from well	11,908	Gaseous emissions	59,691.867
Industrial and cooling water	2,793,421	Thereof CO ₂ :	59,674.857
		Remainder (CO, NO _x , SO ₂ , C _{tot} , CH ₄):	17.010
		Dust	4.147
		Solvent emissions	34.552
Compressed air (input in m ³)		Energy consumption (MWh) 390,119.312	
Compressed air	39,284,864	Energy conversion (electricity)	62,374.824
		Heating (gas)	326,605.536
		Operating energy (Gasoline)	1.728
		Operating energy (Diesel)	1,137.224
Energy procurement		Waste Heat for district heating (MWh) 5,982.000	
Electricity (MWh _{el})	62,374.824		
Natural gas (m ³)	28,322,532.033		
Gasoline (litres)	203.000		
Diesel (litres)	114,732.000		

Waste:

We distinguish the following waste types as: existing materials, non-hazardous waste, hazardous waste and valuable substances.

Waste type	Waste fractions	Total 2025 in t
<i>Existing substances</i>	Metal packaging, organic waste, cardboard packaging, light fraction packaging	103.033
<i>Non-hazardous waste</i>	Waste wood, construction waste, mineral waste, thermal mix, commercial waste, plastic waste, chamotte, abrasives, mineral waste	328.448
<i>Non-hazardous waste (extra projets)</i>	Construction waste, concrete waste, excavation waste	3,288.848
<i>Hazardous waste</i>	Emulsions, oil-water mixtures, waste oils, oil sludge, operating supplies contaminated with oil, electronic waste, phosphating sludge, paint and varnish residues	1,974.235
<i>Valuable substances</i>	Scrap, shavings, scale	46,898.188
Total 2025:		52,592.752



All industrial waste is collected separately, stored in accordance with existing regulations and handed over to duly authorized waste disposal or recycling companies!



Wastewater:

After going through various stages of treatment, the process wastewater goes directly into the river Mürz. There are four different wastewater flows:

Wastewater flow	Volume 2025 in m ³	Ø Volume in m ³ per hour
<i>Seamless pipe plant</i>	1,259,002	143.72
<i>CT plant</i>	1,462,398	166.94
<i>Upsetting installation</i>	8,530	0.39
<i>Phosphatizing installation</i>	1,355	0.23
<i>Heat Treatment Line 2</i>	3,402	0.97
Total wastewater 2025:	2,734,687	



Wastewater treatment technologies used;

- 🌊 Seamless pipe plant: sedimentation and cooling
- 🌊 CT plant: gravel filter and cooling
- 🌊 Upsetting installation: pressure-release flotation
- 🌊 Phosphating installation: neutralization plant
- 🌊 Heat Treatment Line 2: Sand filter und cooling

Wastewater load 2025	kg pro Jahr
Filterable substances	10,323.36
COD	28,111.51
Hydrocarbons	840.91
Phosphorous	354.04
Iron	153.19
Ammonium	0.37
Aluminium	0.75
Nickel	0.14
Nitrite	0.54
Manganese	0.16
Chrome	0.01

Emissions:

The majority of the emissions are caused by the combustion of natural gas used in thermal processes, and a small percentage by use of diesel vehicles.



Material	Required quantity 2025	Gaseous emissionen in t
Natural gas	28,322,532.033 m ³	59,386.685
Diesel fuel	114,732 litres	305.182
Total 2025:		59,691.867

Of 59,691.867 tons of gaseous emissions, the major part (i.e. 99.97%) comprises 59,386.685 tons of CO₂-emissions.

The use of paint containing solvents and pure solvents resulted in solvent emissions to the amount of 34.552 tons in 2025.

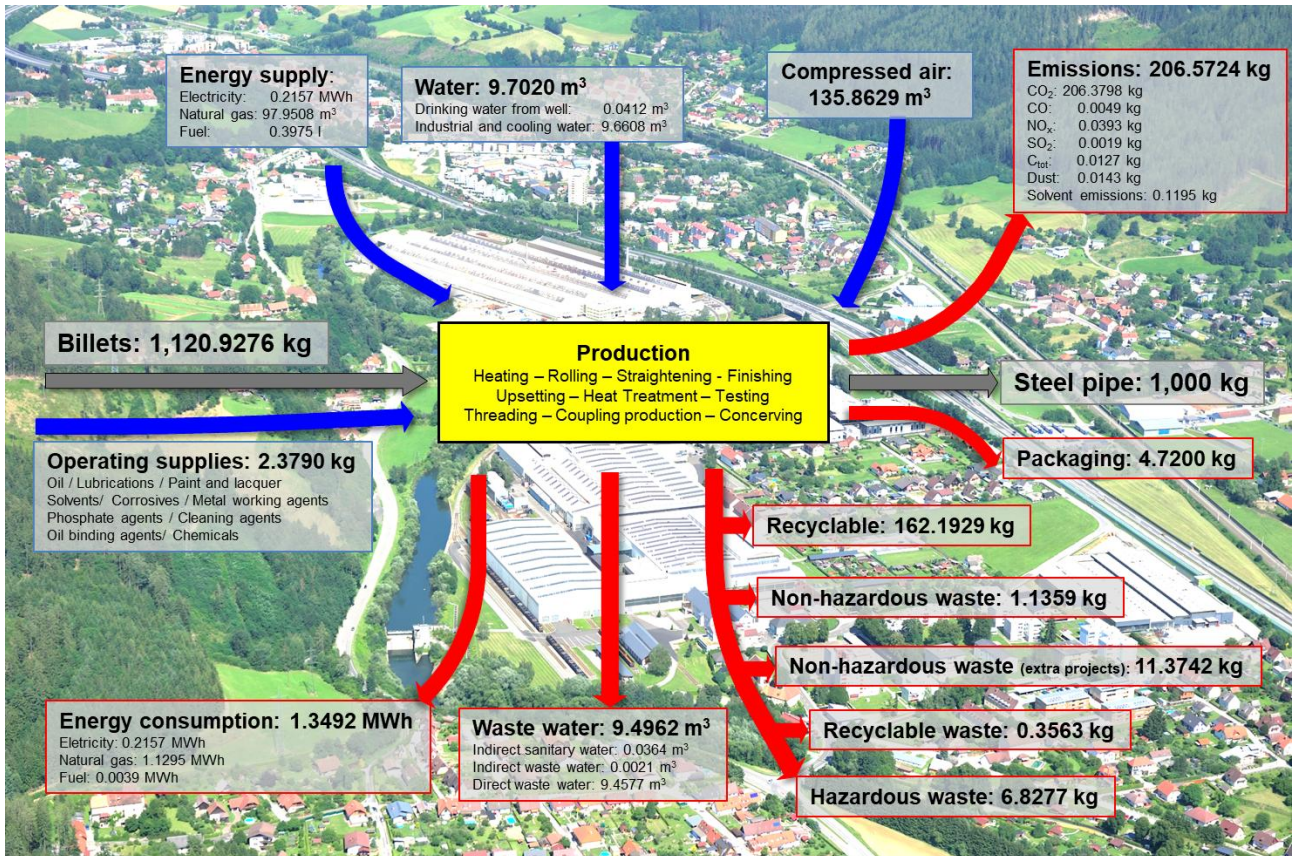
Energy:

Energy consumption consists of the use of natural gas, electric energy and fuel.

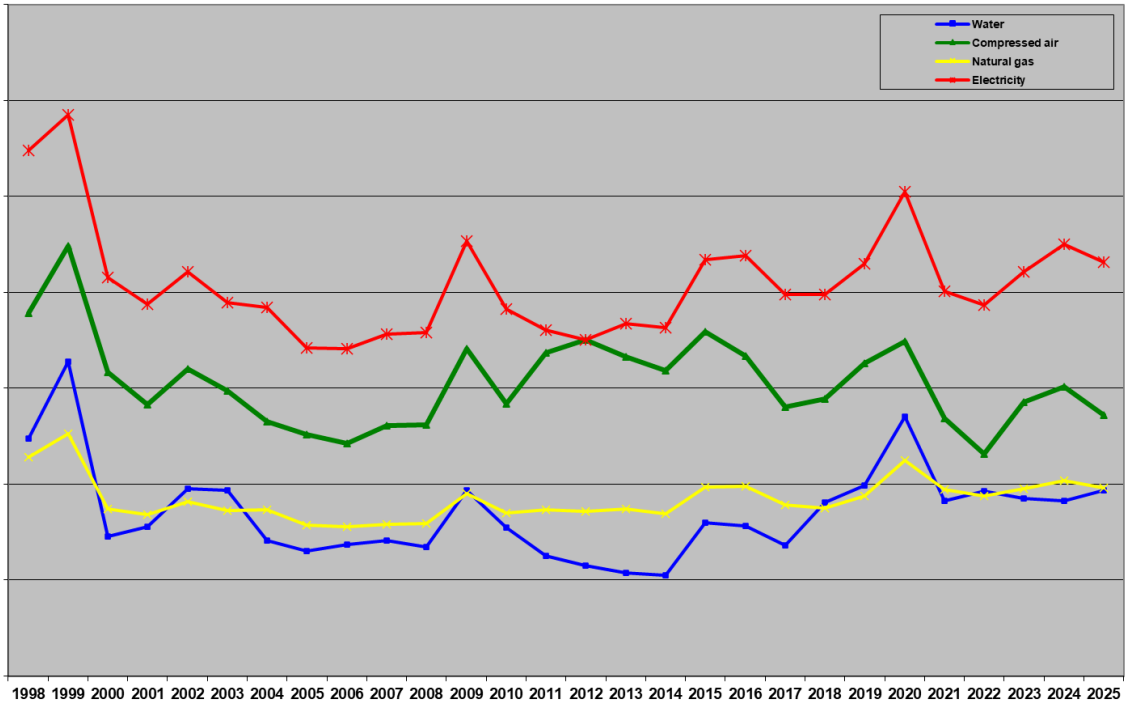


Energy supply	Required quantity 2025	Energy consumption in MWh
Electricity	62,374.824 MWh _{el}	62,374.824
Natural gas	28,322,532.033 m ³	326,605.536
Gasoline	203.000 litres	1.728
Diesel	114,732.000 litres	1,137.224
Total 2025:		390,119.312

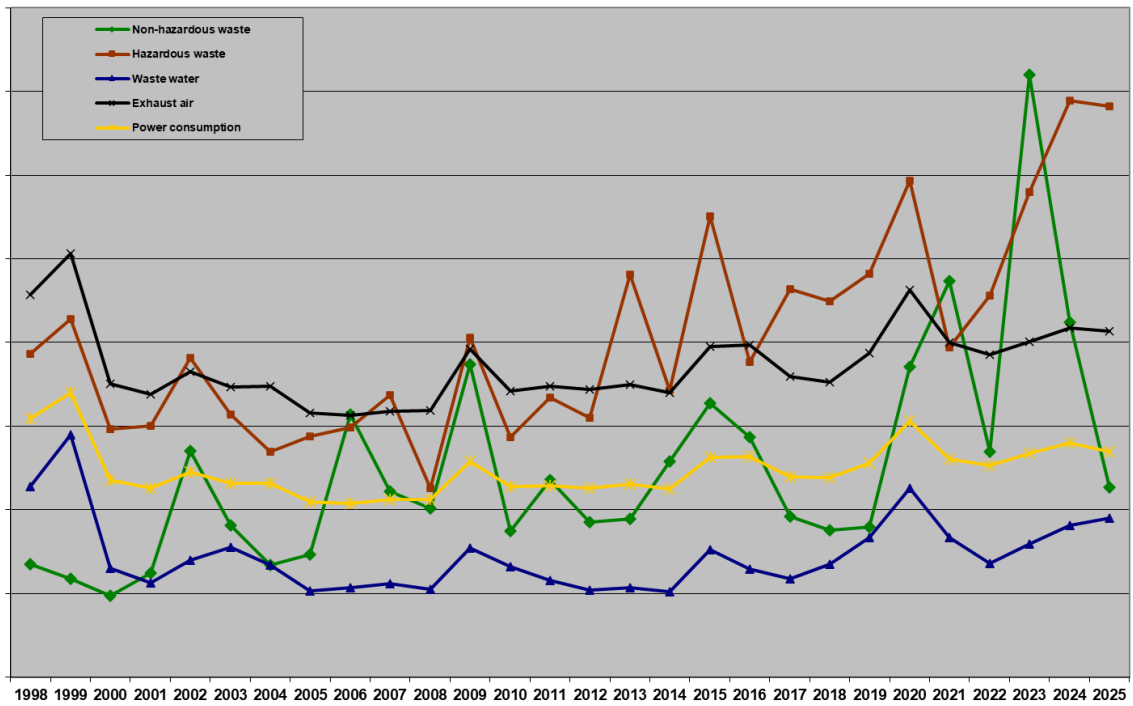
Material and Energy Balance of the production of 1 ton of steel pipe (2025):



Trends of Input Indices from 1998 to 2025:



Trends of Output Indices from 1998 to 2025:



The specific input and output values relate to the corresponding absolute values in proportion to the volume of production.

Imprint

Content, design and layout:
Management Systems Department

Contact:
Harald Kohlhofer
T.+ 050304 23 366
F.+ 050304 63 346
harald.kohlhofer@vatubulars.com

voestalpine Tubulars GmbH & Co KG
Alpinestraße 17
8652 Kindberg-Aumühl
T.+43/50304/23-0
F.+43/50304/63-0
www.voestalpine.com/tubulars

voestalpine
ONE STEP AHEAD.