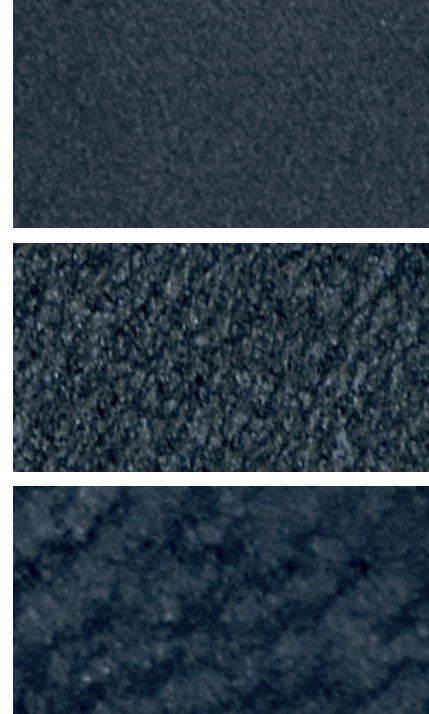


# colofer®



Organic-coated steel strip

colofer® MATT data sheet | page 1/3 | 10/2022



## colofer® MATT

### More than just aesthetics for roofing applications

**Aesthetics meet function.** colofer® MATT was specially developed for roof applications and is characterized by an impressively matt appearance. With three different types of matt surfaces and a large variety of different colors, colofer® MATT is the most versatile product for sheet metal tiles.

**Highest level of UV resistance category on roofs.** We only use top-of-the-line products from the best paint manufacturers, which is why we are able to guarantee the highest UV resistance category class (RUV 4) for selected colors. As a result of extensive research and development, this product combines excellent processing and forming properties without compromising on appearance and function.



Our colofer® technical support consists of a large pool of experts who will be happy to assist you with all your inquiries.

#### Convincing advantages:

- » Three impressive matt surface types
- » High level of UV resistance category (RUV 4\*)
- » Excellent formability
- » Up to 20-year guarantee
- » Guaranteed up to an altitude of 2,100 meters

#### Typical applications:

- » Roof applications
- » Sandwich panels
- » Cassette elements
- » Siding facades



Premium quality  
with reduced carbon footprint

colofer®  
greentec steel

Properties	Testing standard/Inspection requirement	Typical values
Coating thickness	EN 13523-1	approx. 35 µm
Color	EN 13523-3	upon agreement
Gloss (60°)	EN 13523-2	2
Adhesion after cupping	EN 13523-6	6 mm Gt0B
Adhesion after bending	EN 13523-7	≤ 1 T peel adhesion
Crack formation during bending	EN 13523-7	≤ 2 T free of cracks
Scratch resistance	based on EN 13523-12	≥ 15 N
Temperature resistance (during use)	-	from -20 to +80 °C <sup>1)</sup>
Resistance to humidity » Continuous humidity test	EN 13523-25	Test duration: 750 h No formation of blisters on surface
Corrosion resistance » Salt spray test	EN 13523-8	Test duration: 360 h Average creepage (scratch to Zn): 2 mm max., no formation of blisters on surface
Corrosion protection class	DIN 55928-8: 1994	KIII
Corrosivity category on Z275/ZM120 substrate	DIN 55634: 2010	C3
RC category	EN 10169	RC3 on Z275 or ZM120
CPI category	EN 10169	CPI 4
UV resistance category <sup>2)</sup>	EN 10169	RUV 4*
Surface appearance	-	matt fine, matt rough, matt extra rough
Fire classification	EN 13501-1	A1

\* only applies to selected standard colors

All testing standards are the most recent version as long as a year is not indicated.

1) No delamination of coating on even surfaces throughout guarantee period for coating adhesion. Color shades will change as a result of long-term stress at high temperature.

2) UV resistance category depends heavily on color. The respective RUV class is achievable only for colors noted in table „Overview of color shades“ in the Technical Terms of Delivery for colofer®. Additional colors upon request.

Guarantee services for wall applications <sup>1)</sup>	RC2			RC3		
	ZM120	Z275	Z200	ZM120	Z275	Z200
Corrosion (rust)	20	18	12	15	15	10
Coating adhesion	10	10	10	8	8	8
Visual appearance	RUV 4* acc. to EN 10169			RUV 4* acc. to EN 10169		

Guarantee services for roof applications <sup>1)</sup>	RC2			RC3		
	ZM120	Z275	Z200	ZM120	Z275	Z200
Corrosion (rust)	18	15	10	12	12	8
Coating adhesion	10	10	10	5	5	5
Visual appearance	RUV 4* acc. to EN 10169			RUV 4* acc. to EN 10169		

Guarantee periods depending on altitude	up to 900 m	901 – 1,300 m	1,301 – 1,700 m	1,701 – 2,100 m	above 2,100 m
	Guarantee	100%	90%*	70%*	50%*

☹ Upon request    Ⓞ Only with special guarantee    ✕ Not available    \* only applies to selected standard colors    Guarantee periods rounded to whole years.

1) This guarantee between voestalpine and its direct customer shall be governed by and construed in accordance with Austrian law (with the exclusions of its conflict-of-law provisions and the UN Convention on Contracts for the International Sale of Goods of 11 April 1980 - CISG) and only valid in connection with the respective regulations of most recent version of the colofer® guarantee provisions applying at the time of the order confirmation by voestalpine.



Premium quality with reduced carbon footprint

colofer®  
greentec steel

Organic-coated steel strip – greentec steel Edition

Max. carbon footprint 2.40 kg CO<sub>2</sub>e per kg of steel <sup>1)</sup>

<sup>1)</sup> per EN 15804+A2 (EPD methodology) cradle to gate

All products, dimensions and steel grades listed in each voestalpine supply range are available as greentec steel Edition.

All values reflect the current status of our experience and knowledge. Slight deviations may occur as a result of specific color and sheet thickness. Paper printouts cannot be updated on a regular basis. For this reason, please refer to the most recent version of the online data sheets found on our home page ([www.voestalpine.com/colofer](http://www.voestalpine.com/colofer)).

The information and product properties contained in this printed material are non-binding and serve the sole purpose of technical orientation. They do not replace individual advisory services provided by our sales and customer service teams. The product information and characteristics set forth herein shall not be considered as guaranteed properties unless explicitly stipulated in a separate contractual agreement. Technical changes are reserved. Errors and misprints are excepted. No part of this publication may be reprinted without explicit written permission by voestalpine Stahl GmbH.

To find out more about colofer®, please visit us at [www.voestalpine.com/colofer](http://www.voestalpine.com/colofer)



voestalpine Steel Division  
voestalpine-Straße 3  
4020 Linz, Austria  
productmanagement@voestalpine.com  
[www.voestalpine.com/colofer](http://www.voestalpine.com/colofer)

voestalpine  
ONE STEP AHEAD.