



Power Generation

Your partner for innovative solutions

Tereza Schöberl, Key Account Managerin



A strong partnership for heavy responsibilities, such as steel castings delivered up to 200 tons.

A good partnership is based on trust. Trust that our customers have given us for many years in many successful projects. We cooperate with our customers to achieve the extraordinary – such as castings up to 200 tons and high-alloyed materials up to 100 tons. Our many years of experience and expertise in casting technology, material development, pattern engineering and CAD simulation ensure the highest level of project security and have made us one of the world's leading manufacturers of steel castings.

Quality from a single source: Our products.



Gasturbine casing

voestalpine foundry Linz produces steel castings for:

- power generation (steam, gas and industrial turbines)
- oil, gas and chemical industries (e.g., compressors, valves, etc.)
- heavy machine building industry (e.g., parts for forging machines, roll housings, etc.)
- offshore industry (FPSOs, oil platforms, etc.)

All parts can be supplied as-cast, rough-machined and finish-machined. We also offer overlay welding, pressure testing and component assembly. Ready-for-assembly delivery saves our customers time and cost.

Production: up to 10,000 tons/year
Employees: approx. 400



Forging frame

Market leadership is not a matter of size, but of great performance.

voestalpine foundry Linz is the global market leader in the production of heavy steel castings for turbines, compressors and machinery constructions.

- We define ourselves as a center of competence for the manufacturing and development of cast parts in cooperation with our business partners.
- Our convincing performance in material development and engineering has made us a preferred supplier of complex castings to the world's largest manufacturers of turbines, compressors and machinery constructions.
- As a world leader in heavy steel castings, we supply the heaviest parts in unmatched quality.
- Our product market knows no national borders. Customers throughout the world trust in our technical expertise.
- Continuous product and process optimization and a consistent growth strategy place us one step ahead.
- Our highly qualified, trained and experienced employees ensure the future success of our customers.

Expertise from development to the finished product.



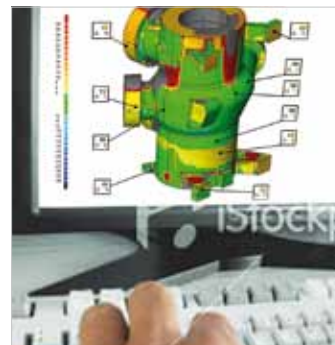
CAD development/engineering



CAE simulation steam turbine



Pattern shop: 5-axis CNC milling



3D pattern scanning

Development

■ CAD

Based on the engineering drawings and 3D data of our partners, we use the most modern computer software to develop optimized casting drawings and 3D models.

■ CAE

Modern simulation software makes it possible to simulate, analyze and optimize production process from moulding to solidification to heat treatment.

■ CAM

Simulation expertise, five-axis CNC milling technology and 3D pattern scanning allow us to produce high-precision patterns with the highest levels of dimensional accuracy.

Processing

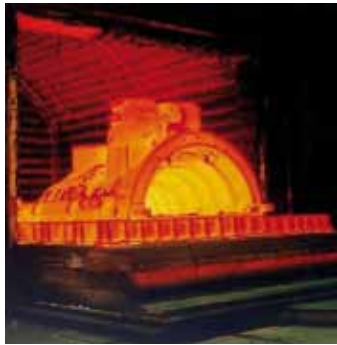
- High-quality chromite and silica sand and state-of-the-art molding technology provide the best-possible casting surface quality in our hand-molding shop. We cast liquid steel of the highest quality and purity made in the LD (basic oxygen) process, induction furnace and secondary metallurgy (ladle furnace, VD/VOD). We have the largest and most modern heat-treatment equipment (max. 16 m x 6 m x 5 m) for normalizing, quenching, tempering and stress relieving.

Quality monitoring

- Continuous production monitoring from the very first second, highly trained specialists, state-of-the-art technologies and our certification in accordance with ISO 9001, ISO 14001 and PED 97/23/EC Annex I, 4.3, guarantee the highest quality.
 - Ultrasonic testing with straight and angle probes (35-70°)
 - Magnetic particle testing (integrated magnetization)
 - X-ray testing
 - Liquid penetrant testing
 - Dimensional control
- Chemical and mechanical test laboratories



Pouring



Heat treatment



Rough machined MEGA steam turbine



Ready for despatch valve casing

The best selection to meet any customer requirement: Our steel grades.

All steel grades meet international standards and customer specifications. Material alloy design for special application is possible. voestalpine foundry Linz has the widest experience in processing state-of-the-art materials – with casting weights ranging from low to the highest possible – and is actively involved in developing high chrome/nickel alloys and new complex alloys for applications under even more extreme conditions.

The information and product properties contained in this printed material are non-binding and serve the exclusive purpose of technical orientation. They do not replace individual consultation provided by our sales and customer service teams. The information and product properties contained in this brochure are guaranteed only when specifically and contractually stipulated. Not responsible for printing errors or technical changes. Duplication in part or in whole is subject to explicit written permission by voestalpine Giesserei Linz GmbH.

Technically more advanced. Successful together. voestalpine – the partner you can trust.

High-quality materials are the basis for our products. We strive to be the best partner for our customers and wish to provide them with the best-possible solution. We focus our expertise on two aspects:
The personal aspect, with dedicated and highly competent employees
The technical aspect, with high-quality methods, products and services

The companies in the voestalpine Steel Division and their employees understand partnerships to be the following:

- Understanding for their customers' business
- Expertise and reliability
- Responsibility for satisfactory project completion
- Partnerships based on trust

Many years of partnerships with our customers prove our point.

voestalpine Giesserei Linz GmbH

voestalpine-Straße 3
Postfach 3
4031 Linz, Austria
T. +43/50304 15-9885
F. +43/50304 55-9885
giesserei@voestalpine.com
www.voestalpine.com/foundry_linz

voestalpine

ONE STEP AHEAD.