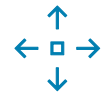


Flexroof 3.0



Online tool for project specific design, including local design standards. The system generates detailed drawings, ballast plan, 3D images and Bill of Materials.



Flexibility

The Flexroof system can handle multiple pitch dimensions and slopes. Dismantling and rebuilding is possible without loss of quality (solid, reusable bolt/nut connections).



FastFoot

Concrete blocks with pre-drilled holes allowing a quick installation and evacuation of water, snow, branches and leaves.



Engineering

In-house engineering and helpdesk at your disposal.



Production

Vertically integrated manufacturing capability.



Conformity

voestalpine SadeF profile solutions are CE certified and have an ISO 9001 and 14001 certification.



Durability

Metallic coated steel components to guarantee a long lifetime.

Headquarters

Belgium

Bruggesteeweg 200
8830 Hooglede-Gits, Belgium
T. +32 51/26 12 11
F. +32 51/26 13 01
sadeF.solar@voestalpine.com

Representative offices

The netherlands

W. Witsenplein 4
2596 BK Den Haag,
The Netherlands
T. +31 70/324 28 02
F. +32 51/26 16 13
sadeF.solar@voestalpine.com

France

2, Bd Albert 1er
94130 Nogent-s-Marne, France
T. +33 1/43 24 60 11
F. +33 1/43 24 60 01
sadeF.solar@voestalpine.com

Germany

Frans-Tilgner-Strasse 10
50354 Hürth, Germany
T. +49 22/33 20 11 48
F. +49 22/33 20 28 85
sadeF.solar@voestalpine.com

www.voestalpine.com/sadeF



SADEF SOLAR
STRUCTURES

FLEXROOF 3.0

TECHNICAL DETAILS

Features

- » Quick and easy to install (Click-system)
- » Thermal disconnection
- » Easy to earth
- » Pre-drilled concrete tiles: FastFoot
- » Calculation tool available for partners: iSolar
- » Integrated cable trays optional



Triangle profile south



Triangle profile E-W



Rail profile with click connection



Back profile



FastFoot

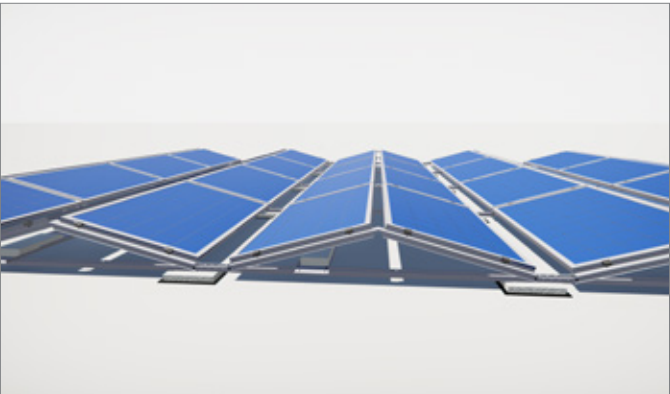


Click connector

Advantages

- » Modular and adjustable for large range of panels
- » One component fits for multiple row distances and tilts
- » Unobstructed roof drainage
- » Specific solutions for large scale projects
- » Over 70 years of experience in building systems

EAST-WEST



SOUTH

