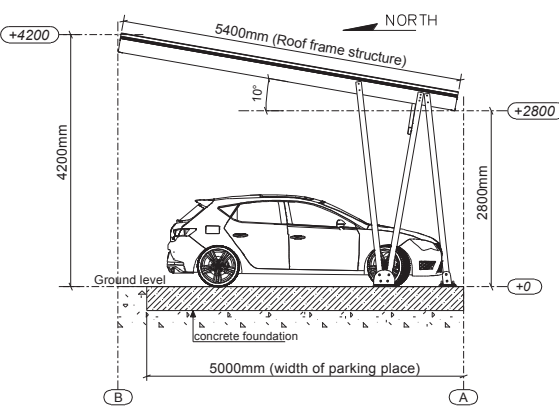


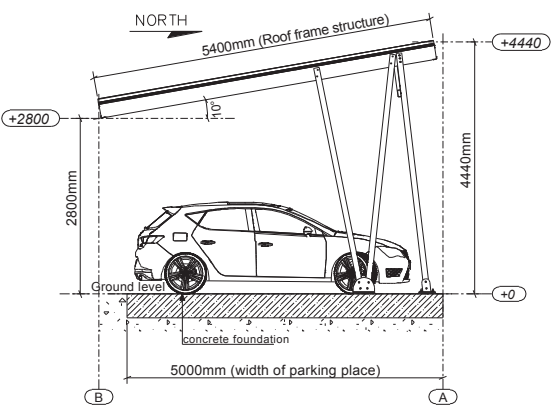
FLEXPARK F: SECTION VIEWS

SINGLE ROW OPTIONS

SOUTH (S)

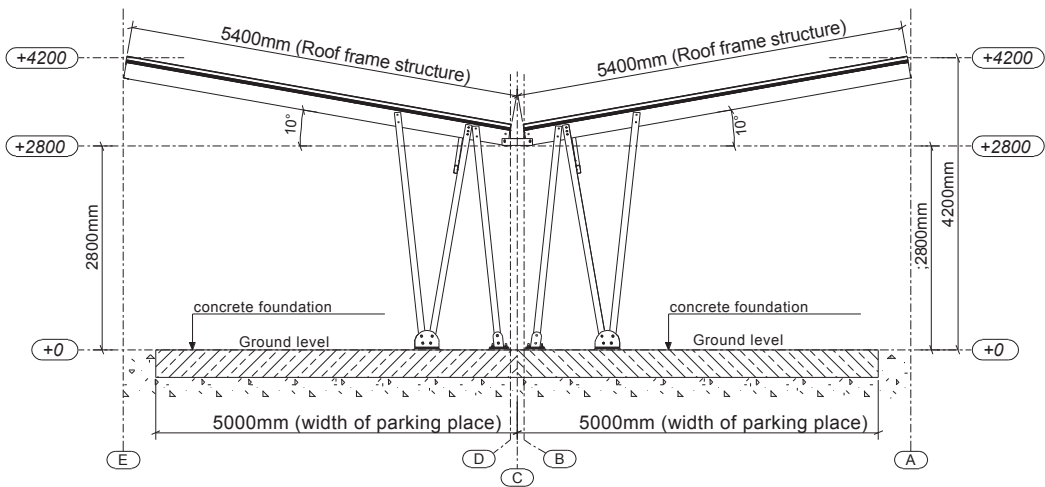


NORTH (N)

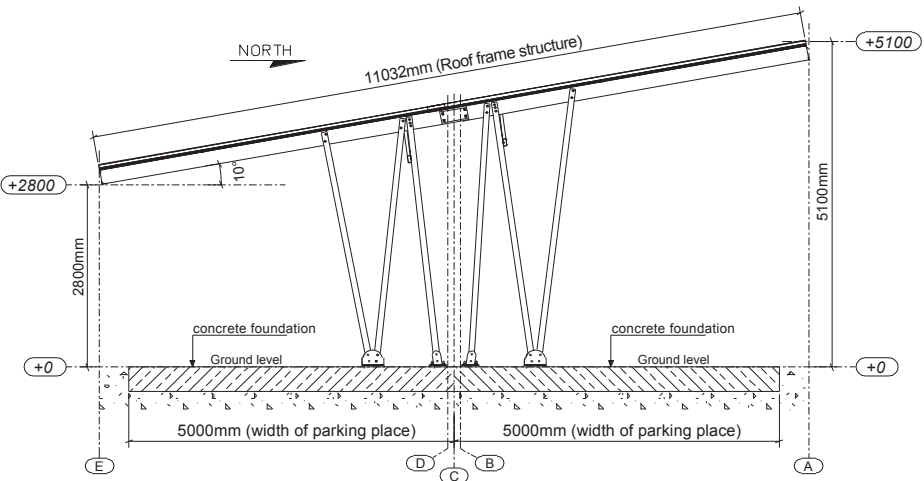


DOUBLE ROW OPTIONS

DUOPITCH (DP)



DOUBLE SOUTH (DS)



*In case of snow load $S_s > 1,1 \text{ kN/m}^2$, height can be up to 200mm more

All dimensions are in mm

Flexpark

Headquarters

Belgium

Bruggesteeweg 200
8830 Hooglede-Gits, Belgium
T. +32 51/26 12 11
sadeef.solar@voestalpine.com

Representative offices

The Netherlands

W. Witsenplein 4
2596 BK Den Haag,
The Netherlands
T.+32 51/26 12 11
sadeef.solar@voestalpine.com

France

2, Bd Albert 1er
94130 Nogent-s-Marne, France
T. +33 1/43 24 60 11
sadeef.solar@voestalpine.com

Germany

Frans-Tilgner-Strasse 10
50354 Hürth, Germany
T. +49 22/33 20 11 48
sadeef.solar@voestalpine.com



Flexpark

FLEXPARK FIX

STANDARD SOLAR CARPORT

voestalpine
ONE STEP AHEAD.

voestalpine Sadeef nv
www.voestalpine.com/sadeef

voestalpine
ONE STEP AHEAD.

FLEXPARK F: TECHNICAL DETAILS

FEATURES

- » Car parking space width : standard 2.5m.
On demand 2.4 and 2.6m (larger volumes)
- » Frame distance D: every 2 car parking spaces
- » Height clearance H : 2.8m
- » Roof width W : 5.4m
- » Universal for all solar PV module types
(portrait or landscape orientation)

BENEFITS

- » Easy access, no obstructive posts when opening doors
- » Quick, easy and efficient installation

SCOPE OF DELIVERY BY VOESTALPINE SADEF

- » All frame components and mutual fixings
- » Assembly instructions and project specific technical support

MATERIALS

- » High strength steel with ZM corrosion resistance
- » Connection parts and fasteners HDG corrosion resistance

ROOF SYSTEM

- » Solar PV mounting system on rails (not included)
- » Solar PV on trapezoidal steel cladding (not included)

WIDE APPLICABILITY

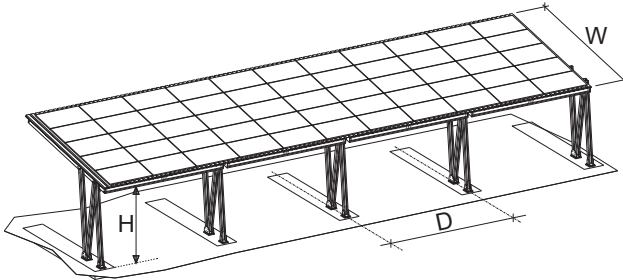
- » Contact us for a project specific wind and snow load check.

TO BE CARRIED OUT/PROVIDED BY CUSTOMER

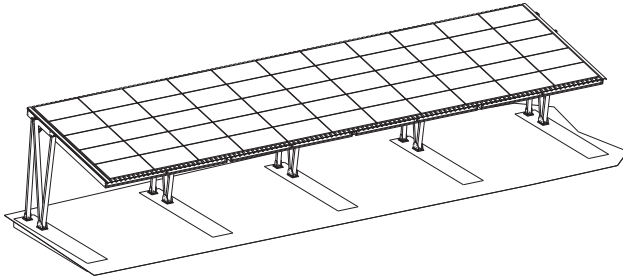
- » Confirmed solar panel layout
- » Confirmed cladding and finishing (PV module, solar mounting system, steel cladding)
- » Guttering, water flow and drainage management
- » Design and supply of foundations and anchors
- » Installation

FOUNDATIONS

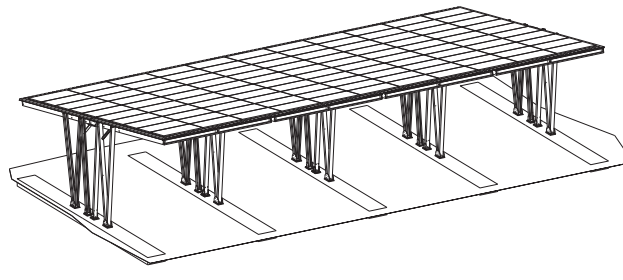
- » Acting forces on foundations can be supplied by voestalpine SadeF on request
- » Project specific foundation design is the responsibility of the customer and his geotechnicien.
- » voestalpine SadeF is not taking any responsibility on foundation design.
- » The type of foundtaion to use depends on the nature and quality of the soil.



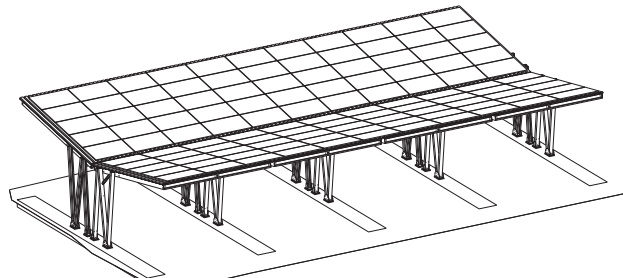
FLEXPARK-F-S (SOUTH)



FLEXPARK-F-N (NORTH)



FLEXPARK-F-DS (DOUBLE SOUTH)



FLEXPARK-F-DP (DUOPITCH)

