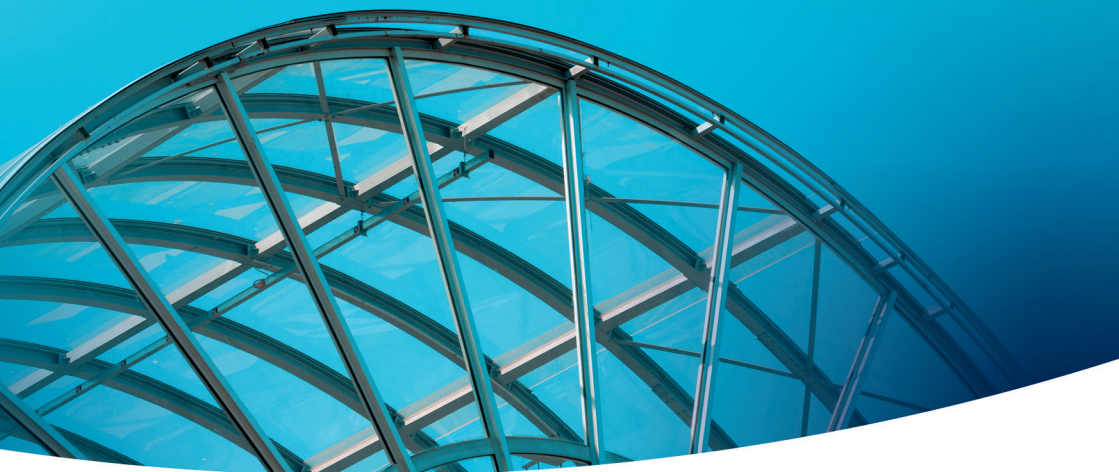


# Standard cold-rolled profile





## voestalpine Profilafröid

designs and manufactures profile in various shapes from top-quality steel for a wide variety of applications: it is produced in France in its factory in Bailleul-sur-Thérain (60).

# Standard profile

This catalogue consists of over 300 different standard profile items, available within short lead times, made of galvanised, black or Sendzimir steel, to meet current standards.

We can also supply tailor-made profile to match your requirements. Our Engineering Department remains at your entire disposal to assist you with future projects.

### Standard profile

90° corners with equal flanges	p. 4
90° corners with unequal flanges	p. 5
90° sliders with equal flanges	p. 6 à 9
Square open tubes	p. 10
Lipped channels	p. 10
Symmetrical omega	p. 11
Galvanised track sections	p. 11
Metal door sections	p. 12
Frame sections	p. 12
Galvanised glazing beads	p. 13
Bracket sections	p. 13

### Bodywork/trailer profile

Trailer side boards	p. 14
Stringers	p. 14

### Other standard profile

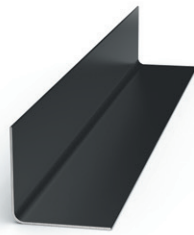
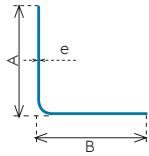
90° corners with equal flanges	p. 15
90° corners with unequal flanges	p. 15
90° sliders with equal flanges	p. 15

### Other products available

Propiclo, closure system without concrete	p. 15
Profivi, vine stakes	p. 15
Sheet piling	p. 15

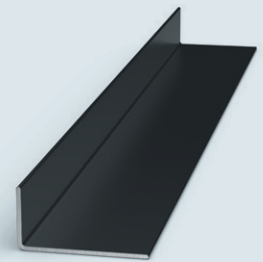
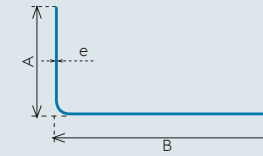
General terms and conditions of manufacture, characteristics and tolerances	p. 16
---	-------

90° corners with equal flanges



Reference	A	B	e	Weight Kg/m	I <sub>xx</sub> cm <sup>4</sup>	I/v <sub>x</sub> cm <sup>3</sup>	m <sup>2</sup> point for 1 ml
A 24*	15	15	1,5	0,324	0,088	0,084	0,0571
A 31*	15	15	2	0,419	0,110	0,106	0,0581
A 3*	20	20	1,5	0,441	0,218	0,153	0,0771
A 7	20	20	2	0,576	0,278	0,198	0,0771
A 8	25	25	2	0,733	0,563	0,317	0,0972
A 9	30	30	2	0,890	0,997	0,464	0,1172
A 12*	30	30	2,5	1,096	1,212	0,568	0,1173
A 39	30	30	3	1,296	1,410	0,670	0,1143
A 13*	35	35	2,5	1,293	1,968	0,784	0,1353
A 17	35	35	3	1,532	2,290	0,927	0,1344
A 11	40	40	2	1,204	2,440	0,840	0,1563
A 14*	40	40	2,5	1,489	2,987	1,035	0,1554
A 35	40	40	3	1,767	3,490	1,230	0,1544
A 26*	40	40	4	2,305	4,458	1,584	0,1546
A 72*	45	45	3	2,000	5,079	1,569	0,1745
A 18	50	50	3	2,238	7,010	1,950	0,1946
A 19	60	60	3	2,709	12,370	2,837	0,2379
A 20	60	60	4	3,561	16,000	3,710	0,2307
A 5011*	65	65	3	2,945	15,862	3,348	0,2570
A 28*	70	70	4	4,189	25,800	5,100	0,2753
A 29	80	80	5	5,957	47,400	8,270	0,3115
A 80*	90	90	5	6,743	69,047	10,589	0,3447
A 30	100	100	5	7,527	94,900	13,100	0,3836

90° corners with unequal flanges

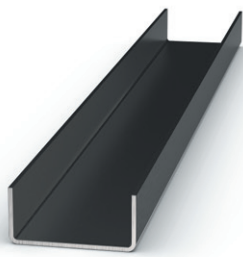
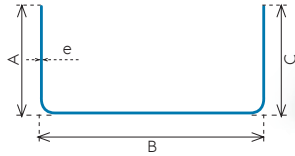


Reference	A	B	e	Weight Kg/m	I <sub>xx</sub> cm <sup>4</sup>	I/v <sub>x</sub> cm <sup>3</sup>	I <sub>yy</sub> cm <sup>4</sup>	I/v <sub>y</sub> cm <sup>3</sup>	m <sup>2</sup> point for 1 ml
A 115	15	20	2	0,497	0,122	0,113	0,248	0.188	0,0661
A 108*	15	30	1,5	0,500	0,109	0,092	0,598	0.314	0,0861
A 119*	15	40	2	0,811	0,145	0,120	1,714	0.705	0,1072
A 161*	20	25	2	0,654	0,300	0,204	0,522	0.305	0,0862
A 147	20	30	2	0,733	0,318	0,211	0,860	0.433	0,0972
A 120	20	40	2	0,879	0,343	0,218	1,890	0.744	0,1172
A 137*	25	40	2	0,968	0,652	0,338	2,060	0.777	0,1272
A 123*	25	50	2	1,125	0,691	0,347	3,790	1.180	0,1463
A 139*	30	40	2	1,047	1,094	0,482	2,217	0.803	0,1363
A 150*	30	40	3	1,532	1,550	0,700	3,140	1.170	0,1344
A 136	30	50	3	1,767	1,660	0,820	5,820	1.780	0,1544
A 124*	30	60	2	1,361	1,216	0,504	6,699	1.721	0,1763
A 191	30	60	3	2,003	1,740	0,735	9,590	2.510	0,1745
A 192	30	80	3	2,474	1,860	0,755	21,000	4.300	0,2146
A 193	30	100	3	2,945	1,940	0,768	38,700	6.510	0,2547
A 227	50	100	3	3,416	8,550	2,120	46,600	7.190	0,2949
A 264*	50	100	4	4,459	11,089	2,775	61,175	9.483	0,2931
A 160	50	100	5	5,564	13,400	3,390	73,500	11.600	0,2914
A 5257*	100	150	5	9,49	107,872	13,859	290,144	28.306	0,484

\* References not kept in stock, produced to order.

\* References not kept in stock, produced to order.

## 90° sliders with equal flanges



Reference	A and C	B	e	Weight Kg/m	I <sub>xx</sub> cm <sup>4</sup>	I <sub>/vx</sub> cm <sup>3</sup>	I <sub>yy</sub> cm <sup>4</sup>	I <sub>/vy</sub> cm <sup>3</sup>	m <sup>2</sup> paint for 1 ml
U 618	11	7	1,5	0,283	0,038	0,064	0,022	0,064	0,0511
U 5320*	15	10	1,5	0,397	0,112	0,133	0,080	0,160	0,0711
U 476	18	10	2	0,618	0,218	0,231	0,107	0,214	0,0822
U 672	25	10	2	0,838	0,595	0,451	0,152	0,304	0,1102
U 5421	30	11	2	1,011	1,010	0,646	0,235	0,427	0,1323
U 322*	20	13	2	0,728	0,349	0,312	0,233	0,359	0,0972
U 323	14	14	2	0,556	0,126	0,157	0,190	0,271	0,0741
U 5379	30	14	2	1,058	1,147	0,695	0,425	0,607	0,1383
U 434	20	15	1,5	0,589	0,294	0,251	0,275	0,367	0,1021
U 493	15	20	2	0,681	0,185	0,197	0,490	0,490	0,0902
U 392*	20	20	1,5	0,648	0,333	0,269	0,537	0,537	0,1112
U 373	20	20	2	0,838	0,416	0,344	0,653	0,653	0,1102
U 328	25	20	2	0,995	0,792	0,532	0,828	0,828	0,1303
U 331	35	22	2	1,341	2,105	1,029	1,436	1,306	0,1743
U 313*	10	25	1,5	0,471	0,052	0,073	0,486	0,389	0,0831
U 335*	20	25	2	0,917	0,465	0,363	1,134	0,907	0,1202
U 530	25	25	2	1,074	0,857	0,555	1,370	1,100	0,1403
U 454*	30	25	2	1,231	1,442	0,790	1,663	1,330	0,1603
U 383*	35	25	2	1,388	2,180	1,050	1,900	1,502	0,1804
U 406*	40	25	2	1,545	3,200	1,359	2,192	1,753	0,2014
U 315	15	30	1,5	0,648	0,176	0,167	1,070	0,714	0,1112
U 395*	20	30	2	0,995	0,497	0,377	1,710	1,140	0,1303
U 340	30	30	2	1,309	1,530	0,816	2,490	1,660	0,1703
U 531	30	30	3	1,887	2,110	1,160	3,310	2,200	0,1665
U 5380*	40	30	2,5	1,996	4,145	1,728	3,930	2,620	0,2075
U 565	50	30	3	2,829	8,790	3,070	5,500	3,670	0,2447

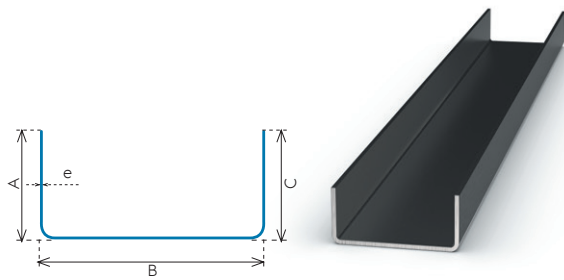
\* References not kept in stock, produced to order.

Reference	A and C	B	e	Weight Kg/m	I <sub>xx</sub> cm <sup>4</sup>	I <sub>/vx</sub> cm <sup>3</sup>	I <sub>yy</sub> cm <sup>4</sup>	I <sub>/vy</sub> cm <sup>3</sup>	m <sup>2</sup> paint for 1 ml
U 407	15	35	2,5	1,114	0,273	0,263	2,302	1,315	0,1173
U 5381*	20	35	2,5	1,310	0,631	0,469	2,962	1,692	0,1373
U 415	35	35	2,5	1,899	3,000	1,380	4,086	2,780	0,1975
U 393*	15	40	2	0,995	0,244	0,225	2,660	1,330	0,1303
U 381	20	40	2	1,152	0,556	0,397	3,380	1,690	0,1503
U 651	20	40	3	1,651	0,758	0,558	4,637	2,318	0,1444
U 388	20	40	4	2,099	0,916	0,706	5,240	2,620	0,1425
U 403	28	40	2	1,403	1,420	0,759	4,540	2,270	0,1804
U 641	30	40	3	2,122	2,419	1,243	6,691	3,345	0,1845
U 5382	40	40	2	1,780	3,790	1,490	6,270	3,140	0,2305
U 673	40	40	3	2,593	5,330	2,150	8,600	4,300	0,2247
U 438	40	40	4	3,355	6,650	2,750	10,400	5,220	0,2208
U 5383	25	50	2	1,466	1,130	0,634	7,063	2,825	0,1894
U 361	25	50	3	2,122	1,570	0,909	9,440	3,780	0,1845
U 401	30	50	2	1,624	1,885	0,903	8,226	3,290	0,2117
U 563	30	50	3	2,358	2,620	1,300	11,100	4,544	0,2046
U 10406*	35	50	4	3,355	5,148	2,259	16,110	6,444	0,2229
U 5384*	40	50	3	2,829	5,906	2,259	14,670	5,869	0,2447
U 10644*	45	50	4	3,983	10,417	3,667	20,353	8,141	0,2610
U 473	50	50	3	3,300	10,800	3,440	17,700	7,090	0,2848
U 576	50	50	4	4,297	13,700	4,440	22,000	8,790	0,2791
U 362	30	60	3	2,593	2,810	1,340	17,100	5,710	0,2247
U 369	30	60	4	3,355	3,520	1,720	21,000	7,010	0,2208
U 5385	40	60	3	3,064	6,290	2,330	22,000	7,340	0,2648
U 363	50	60	3	3,535	11,600	3,560	26,900	8,960	0,3049
U 489	60	60	4	5,240	24,500	6,530	39,000	13,300	0,3393

\* References not kept in stock, produced to order.



## 90° sliders with equal flanges



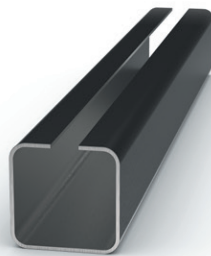
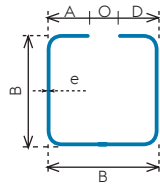
Reference	A and C	B	e	Weight Kg/m	I <sub>xx</sub> cm <sup>4</sup>	I <sub>vx</sub> cm <sup>3</sup>	I <sub>yy</sub> cm <sup>4</sup>	I <sub>vy</sub> cm <sup>3</sup>	m <sup>2</sup> paint for 1 ml
U 364	30	70	3	2,829	2,970	1,370	24,800	7,080	0,2447
U 5304	40	70	3	3,300	6,692	2,398	32,080	9,166	0,2848
U 502	40	70	4	4,297	8,450	3,100	39,400	11,300	0,2791
U 687	30	80	3	3,064	3,099	1,393	34,970	8,743	0,2648
U 592*	40	80	2	2,408	4,888	1,681	30,830	7,708	0,3086
U 5303	40	80	3	3,535	7,007	2,449	43,860	10,960	0,3049
U 427	40	80	4	4,611	8,890	3,180	54,100	13,500	0,2992
U 5387	50	80	3	4,007	13,000	3,760	52,000	13,000	0,3450
U 5388	50	80	4	5,240	16,600	4,890	65,700	16,400	0,3393
U 491	50	80	5	6,419	19,700	5,920	76,500	19,100	0,3356
U 490*	60	80	4	5,866	27,500	6,920	77,300	19,300	0,3795
U 627*	35	90	3	3,535	4,990	1,919	52,200	11,600	0,3049
U 546	45	90	4	5,240	12,900	4,070	79,200	17,600	0,3393
U 688	30	100	3	3,535	3,310	1,440	59,000	11,800	0,3049
U 514	40	100	4	5,240	9,602	3,275	94,580	18,910	0,3393
U 464	50	100	3	4,477	14,000	3,890	87,200	17,400	0,3851
U 428	50	100	4	5,866	18,000	5,080	111,000	22,200	0,3795
U 634	50	100	5	7,204	21,500	6,170	130,000	26,100	0,3758
U 488	60	100	5	7,990	35,900	8,790	153,000	30,600	0,4160
U 547	50	110	4	6,181	18,600	5,150	139,000	25,300	0,3996
U 526	40	120	3	4,477	7,930	2,585	115,000	19,170	0,3851
U 10375	50	120	3	4,949	14,934	4,003	135,635	22,605	0,4285
U 429	50	120	4	6,495	19,200	5,220	171,000	28,500	0,4196
U 522	50	120	5	7,990	23,000	6,360	202,000	33,700	0,4160
U 10522*	55	120	5	8,382	30,518	7,711	226,195	37,699	0,4341
U 460	60	120	4	7,123	31,900	7,420	198,000	33,000	0,4578
U 5326	60	120	6	10,374	44,600	10,700	270,000	45,100	0,4506

\* References not kept in stock, produced to order.

Reference	A and C	B	e	Weight Kg/m	I <sub>xx</sub> cm <sup>4</sup>	I <sub>vx</sub> cm <sup>3</sup>	I <sub>yy</sub> cm <sup>4</sup>	I <sub>vy</sub> cm <sup>3</sup>	m <sup>2</sup> paint for 1 ml
U 554*	55	130	4	7,123	25,830	6,361	226,721	34,880	0,4598
U 5390	50	140	5	8,774	24,200	6,500	294,000	42,000	0,4522
U 461	60	140	4	7,751	33,600	7,590	284,000	40,600	0,4980
U 431	60	140	5	9,559	40,600	9,290	339,000	48,500	0,4944
U 504*	60	140	6	11,316	47,200	10,900	391,000	55,900	0,4888
U 371	50	150	3	5,655	15,900	4,110	227,000	30,300	0,4854
U 5391	50	150	5	9,167	24,700	6,560	348,000	46,300	0,4743
U 10305*	60	150	5	9,952	41,915	9,430	412,183	54,957	0,5145
U 432	70	150	5	10,737	64,000	12,700	453,000	60,400	0,5527
U 5392	45	170	4	7,751	15,700	4,430	368,000	43,300	0,4980
U 616	65	180	5	11,522	55,290	11,240	676,400	75,160	0,5949
U 10437*	70	200	6	15,126	82,810	15,634	1077,542	107,754	0,6518
U 463	80	200	4	10,891	83,790	13,860	830,000	83,000	0,6988
U 433	80	200	5	13,484	102,000	17,100	993,300	99,300	0,6954
U 551	80	200	6	16,027	120,000	20,200	1160,000	116,000	0,6921
U 664	82,5	300	6	20,971	147,380	22,570	3230,000	215,320	0,9013

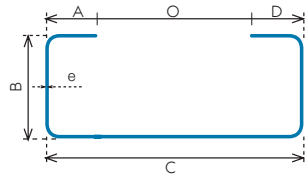
\* References not kept in stock, produced to order.

## Square open tubes



Reference	A and D	B=B	O	e	Weight Kg/m	I <sub>xx</sub> cm <sup>4</sup>	I <sub>vx</sub> cm <sup>3</sup>	I <sub>yy</sub> cm <sup>4</sup>	I <sub>vy</sub> cm <sup>3</sup>	m <sup>2</sup> point for 1 ml
D 7637*	5	20 x 20	10	2	0,926	0,890	0,494	0,427	0,668	0,1222
D 2699	8	20 x 20	4	2	1,005	0,984	1,586	0,553	0,654	0,1323
D 7646	10	25 x 25	5	2	1,287	1,283	1,280	0,969	1,420	0,1683
D 2688	11,5	30 x 30	7	2	1,57	1,565	2,340	1,460	2,620	0,2044
D 7680	10	35 x 35	15	2	1,743	1,754	3,568	1,810	4,438	0,2264
D 2689	14	35 x 35	7	2	1,884	1,879	3,970	2,150	4,370	0,2445

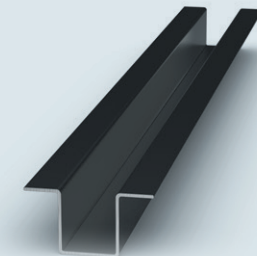
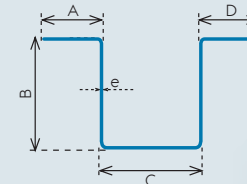
## Lipped channels



Reference	A and D	B	C	O	e	Weight Kg/m	I <sub>xx</sub> cm <sup>4</sup>	I <sub>vx</sub> cm <sup>3</sup>	I <sub>yy</sub> cm <sup>4</sup>	I <sub>vy</sub> cm <sup>3</sup>	m <sup>2</sup> point for 1 ml
D 2664*	5	14	20	10	1,5	0,567	0,169	0,204	0,413	0,413	0,1042
D 2615	7,5	15	30	15	1,5	0,767	0,286	0,314	1,180	0,790	0,1332
D 2617	10	20	40	20	2	1,361	0,904	0,745	3,740	1,870	0,1783
D 7642	12,5	25	40	15	2	1,597	1,181	1,277	4,702	2,351	0,2104
D 2683*	12	25	50	26	2	1,738	1,948	1,281	8,074	3,229	0,2254
D 7660	12,5	25	50	25	3	2,476	2,410	1,580	10,200	4,080	0,2186
D 7661	15	32	64	34	3	3,159	6,331	3,270	26,650	8,330	0,2768
D 2641	20	40	80	40	3	4,242	12,470	5,173	50,560	12,640	0,3631
D 12823*	15	50	100	70	3	4,951	19,620	5,970	95,300	19,060	0,4212
D 2676	25	50	100	50	3	5,420	25,880	8,600	103,200	20,640	0,4634
D 7663*	25	50	100	50	4	7,018	31,810	10,550	129,700	25,940	0,4498
D 17771*	15	40	120	90	3	4,949	12,500	4,470	129,600	21,610	0,4232
D 7664*	25	62,5	125	75	5	10,484	65,800	16,600	293,000	46,900	0,5366
D 17772*	20	50	140	100	3	6,129	26,290	7,726	224,700	32,100	0,5235
D 7665*	25	80	160	110	5	12,918	140,900	26,970	665,300	83,170	0,6793

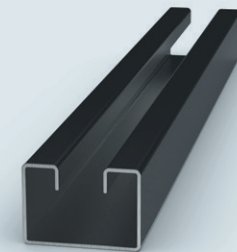
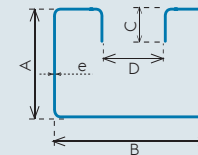
\* References not kept in stock, produced to order.

## Symmetrical omega



Reference	A and D	B	C	e	Weight Kg/m	I <sub>xx</sub> cm <sup>4</sup>	I <sub>vx</sub> cm <sup>3</sup>	I <sub>yy</sub> cm <sup>4</sup>	I <sub>vy</sub> cm <sup>3</sup>	m <sup>2</sup> point for 1 ml
O 1102*	10	25	20	2	1,190	1,367	1,090	1,526	0,850	0,1523
O 1103*	13	25	40	2	1,614	2,011	1,430	7,296	2,350	0,2044
O 1105*	22	25	60	2	2,211	3,014	2,190	23,730	4,750	0,2785
O 1107	25	30	30	2	1,991	3,561	2,080	9,358	2,460	0,2505
O 1114	13	35	45	2	2,007	4,716	2,370	11,120	3,320	0,2545
O 1159	23	36	50	3	3,492	9,204	5,000	29,170	6,480	0,2969
O 1147*	35	36	85	3	4,834	13,940	6,250	115,000	15,400	0,4112
O 1116*	12	40	25	2	1,816	5,098	2,530	3,534	1,570	0,2305
O 1124*	12	50	26	2	2,148	9,003	3,550	4,509	1,960	0,2705
O 1134*	15	50	30	2,5	2,817	12,270	4,910	7,969	2,900	0,2897
O 1258*	22	60	34	2,5	3,563	23,180	7,390	16,050	4,340	0,3619
O 1128	22	60	35	3	4,221	27,040	8,620	18,510	5,070	0,3591
O 1131	30	70	38	4	6,647	57,680	15,100	39,630	8,610	0,4196

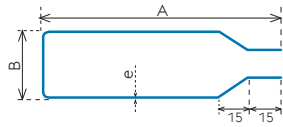
## Galvanised track sections



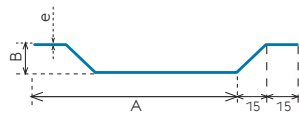
Reference	A	B	C	D	e	Weight Kg/m	I <sub>xx</sub> cm <sup>4</sup>	I <sub>vx</sub> cm <sup>3</sup>	I <sub>yy</sub> cm <sup>4</sup>	I <sub>vy</sub> cm <sup>3</sup>	m <sup>2</sup> point for 1 ml
D 17684	35	30	5	7	1,5	1,391	3,004	1,675	2,511	1,674	0,2424
D 12641	50	40	5,5	11	2	2,516	10,800	4,200	8,400	4,200	0,3266
D 12679	62	55	8	19	2	3,316	21,000	6,380	21,172	7,698	0,4268
D 12613	85	70	15	20	3	6,839	84,362	19,446	66,941	19,126	0,5757

\* References not kept in stock, produced to order.

## Metal door sections

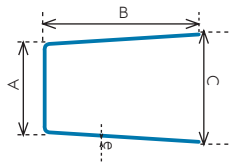


Reference	A	B	e	Weight Kg/m	m <sup>2</sup> paint for 1ml
MM2830	95	34	2	3,427	0,4569



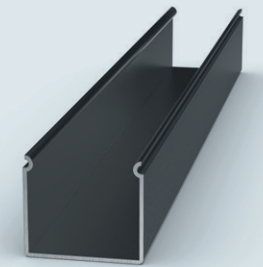
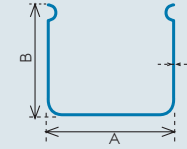
Reference	A	B	e	Weight Kg/m	m <sup>2</sup> paint for 1ml
MM2831*	125	16	2	1,976	0,2745

## Frame sections



Reference	A	B	C	e	Weight Kg/m	m <sup>2</sup> paint for 1ml
U 909	12	40	13	2	1,341	0,1743

## Galvanised glazing beads

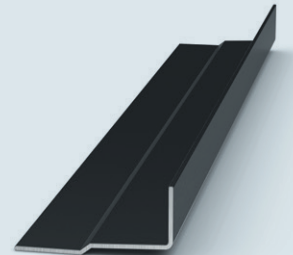
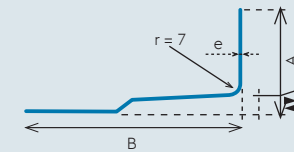


Reference	A	B	e	Weight Kg/m	m <sup>2</sup> paint for 1ml
U 934	12	12	1,25	0,313	0,0666
U 1072	12	16	1,25	0,393	0,0816
U 1069	12	19	1,25	0,448	0,0946

References U1069 and U1072 also come in black steel.

## Bracket sections

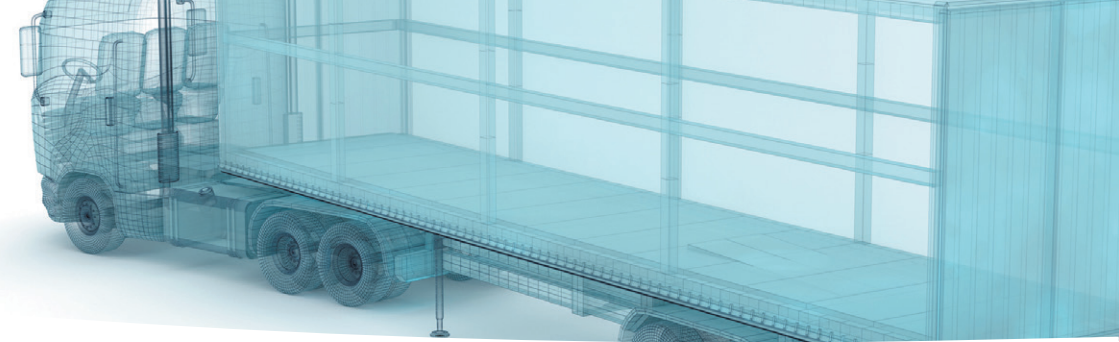
for IPN or IPE from 80 to 160



Reference	IPN	A	B	e	Weight Kg/m	m <sup>2</sup> paint for 1ml
D 17935	IPN80	60	65	5	4,324	0,2251
D 22781	IPN100 à 140	85	96	5	6,394	0,3316
D 22782*	IPN160	120	96	6	9,342	0,4023

\* References not kept in stock, produced to order.

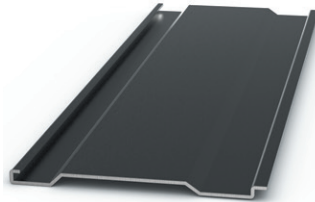
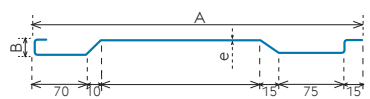
\* References not kept in stock, produced to order.



## Bodywork / trailer profile

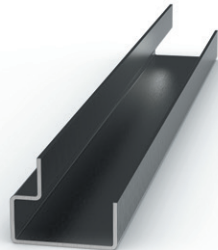
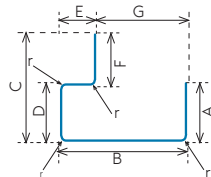
voestalpine Profilafröid also supplies standard profile for the manufacture of trailers.

### Trailer side boards



Reference	A	B	e	Weight Kg/m	I <sub>xx</sub> cm <sup>4</sup>	I <sub>vx</sub> cm <sup>3</sup>	I <sub>yy</sub> cm <sup>4</sup>	I <sub>vy</sub> cm <sup>3</sup>
D 17815*	365	50	2	8,045	31,64	9,52	1 471,77	83,47
D 17814*	515	50	2	10,400	37,44	10,17	4 165,66	145,05

### Trailer stringers



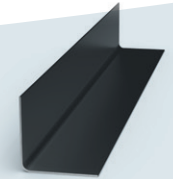
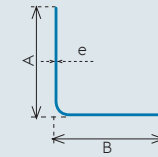
Reference	A	B	C	D	E	G	e	Weight Kg/m	I <sub>xx</sub> cm <sup>4</sup>	I <sub>vx</sub> cm <sup>3</sup>	I <sub>yy</sub> cm <sup>4</sup>	I <sub>vy</sub> cm <sup>3</sup>
D 2637	42	90	77	42	26	64	3	5,140	67,630	13,278	31,574	5,714
D 2638*	42	100	77	42	26	74	3	5,375	88,076	15,490	32,788	5,839
D 17853*	42	140	77	42	34	106	4	8,321	258,093	32,441	48,429	8,328

## Other standard profile

Many other items are not listed in this catalogue. We are at your disposal to supply standard profile to your own dimensions and thicknesses. These references are not in stock. A minimum order is required, depending on the profile.

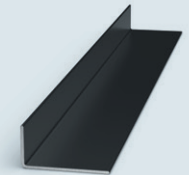
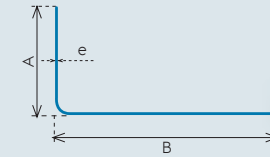
### 90°corners with equal flanges

Dimensions	A	B	e
Mini	10	10	0,5
Max	300	300	10



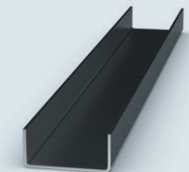
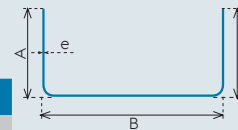
### 90°corners with unequal flanges

Dimensions	A	B	e
Mini	5	10	0,5
Max	100	380	10



### 90°sliders with equal flanges

Dimensions	A and C	B	e
Mini	6	7	0,5
Max	200	800	10



## Other products available

> Propiclo, closure system without concrete



> Vine stakes



> Sheet piling





## Conditions générales de fabrication, caractéristiques et tolérances

The general terms and conditions of manufacture, characteristics and tolerances of the profile listed in this catalogue are those defined by the **NF EN 10162** standard.

Unless otherwise specified, profile is delivered in normal lengths of **6,000 mm or 12,000 mm (-0 to 50 mm)** in bundles of **500 kg or 1 000 kg**.

The per metre weight of the profile in our catalogues, proposals and acknowledgements is theoretical and may vary either way, depending on the thickness tolerances imposed by sheet metal manufactures, as defined by the standards indicated below:

Steel	Steel standard	Steel dimension standard tolerances
Hot-rolled	NF EN 10025-2	NF EN 10051
Cold-rolled	NF EN 10130	NF EN 10131
Galvanised	NF EN 10346	NF EN 10143

Any requests for deviation from the above standards must receive voestalpine Profilafröid agreement.

## Certifications

### Système

voestalpine Profilafröid est certifiée

ORGANISATION AVEC  
SYSTÈME QUALITÉ CERTIFIÉ  
PAR DNV  
ISO 9001

### Produits

Les produits sont certifiés CE EN1090-1



## voestalpine Profilafröid

2, rue de Beauvais

60930 Bailleul-sur-Thérain - France

T. +33 3 44 07 51 11

F. +33 3 44 07 65 34

Email : [contact-pfd@voestalpine.com](mailto:contact-pfd@voestalpine.com)

[www.voestalpine.com/profilafröid](http://www.voestalpine.com/profilafröid)

# voestalpine

ONE STEP AHEAD.