

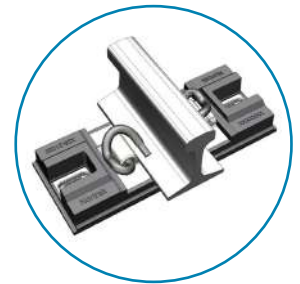


Nortrak Bonded Special Trackwork Direct Fixation Fastener

Description

The Nortrak direct fixation fastener series features fully vulcanized rubber bonded direct fixation fasteners designed to fit all special trackwork configurations.

- » Unique fixed shoulder design eliminates maintenance under traffic
- » Adjustable bolt through the bottom plate design improves fastener life and reduces stress
- » Uniform fastener height, stiffness and cant throughout the special trackwork to eliminate transitions
- » Available in standard, medium and high attenuation versions



FEATURES AND BENEFITS

- » Over 40 years of service performance in the US and Asia
- » Integrated guard rail and switch roller designs
- » Eight plate sizes to ensure optimal fit with all special trackwork configurations
- » Adaptable for use with on wood and concrete crossties in addition to standard slab track applications
- » Provides excellent electrical isolation against stray currents
- » Design allows seamless use with various rail sizes and gauges



Nortrak Bonded STW Direct Fixation Fastener
20 May 2022

voestalpine Railway Systems Nortrak
www.voestalpine.com/nortrak

voestalpine

ONE STEP AHEAD.