

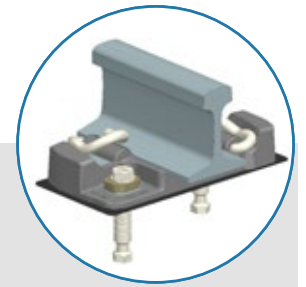


FA 100L BONDED STANDARD DIRECT FIXATION FASTENER

Description

The FA 100L fastener is part of the new generation of fully vulcanized direct fixation fasteners for mainline track.

The FA 100L series, including FA100L1 and FA100L2 fasteners, is specially designed for heavy transit operations that have constraining factors such as minimal vertical height envelopes, a need for extended lateral adjustment, and a left-handed anchor pattern.



Features and Benefits

- » Standard Left-Handed North American anchor pattern with a 1.5" rail seat height and no cant.
- » Containment design provides fail-safe stability while offering the resiliency required to limit wheel impacts and improve ride quality.
- » Innovative design features reduced rail seat plate stress and rubber strain compared to typical sandwich style fasteners.
- » Serrated adjustment features allow for up to 2 inches of total adjustment in 1/8 inch increments.
- » Available in versions for slab track and wood crosstie applications.
- » Specialized corrosion resistance hardware options available.
- » Designed, manufactured, and tested in the United States with a fully Buy America compliant supply chain.