

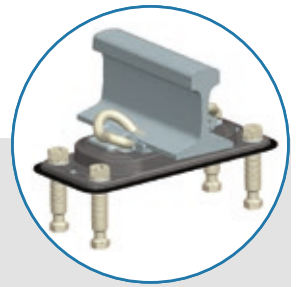


FA 440 BONDED STANDARD DIRECT FIXATION FASTENER

Description

The FA 440 fastener is a new philosophy on the fully vulcanized bonded fastener design. This product provides exceptional lateral load resistance while also offering superior vertical track resiliency.

The FA 440 is specially designed to be a single-piece direct replacement of a typical multi-component elastic fastener with cast plate, pads, and insulators. It provides a self-contained one-part solution for ballasted and slab tracks.



Features and Benefits

- » Provides 1:40 cant on a 1"-3/4" Railseat height envelope. Allows use of both left and right-handed clips.
- » Containment design provides fail-safe stability while offering a range of stiffness options for optimal attenuation.
- » Robust top plate reduces rail seat plate stresses and rubber strain compared to typical sandwich-style fasteners.
- » Available in versions for slab track and wood crosstie applications.
- » Offers exceptional lateral load performance and a stiffness profile that allows for a more even distribution of vertical wheel loads.
- » Single-piece fastener significantly reduces the amount of components in the track compared with traditional elastic fastener systems.
- » Designed, manufactured, and tested in the United States with a fully Buy America compliant supply chain.