

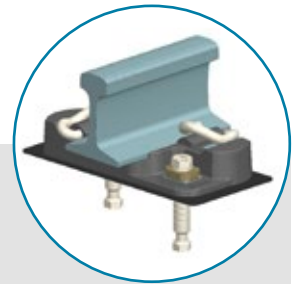


FA 140 BONDED STANDARD DIRECT FIXATION FASTENER

Description

The FA 140 fastener is part of the new generation of fully vulcanized direct fixation fasteners for mainline track.

The FA 140 is specially designed for transit operations. This product offers high-reliability, an all Buy-America supply chain, and the performance necessary to keep passengers moving for decades.



Features and Benefits

- » Standard North American anchor pattern with a 1-7/8" rail seat height and 1:40 cant.
- » Containment design provides fail safe stability while offering a range of stiffness options for optimal attenuation.
- » Innovative design features reduce rail seat plate stress and rubber strain compared to typical sandwich style fasteners.
- » Serrated adjustment features allow for up to 1 inch of adjustment in 1/8 inch increments.
- » Available in versions for slab track and wood crosstie applications.
- » Designed, manufactured, and tested in the United States with a fully Buy America compliant supply chain.