

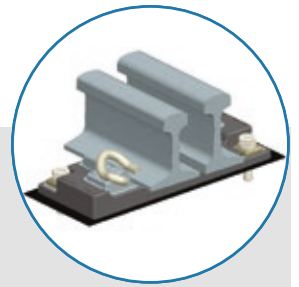
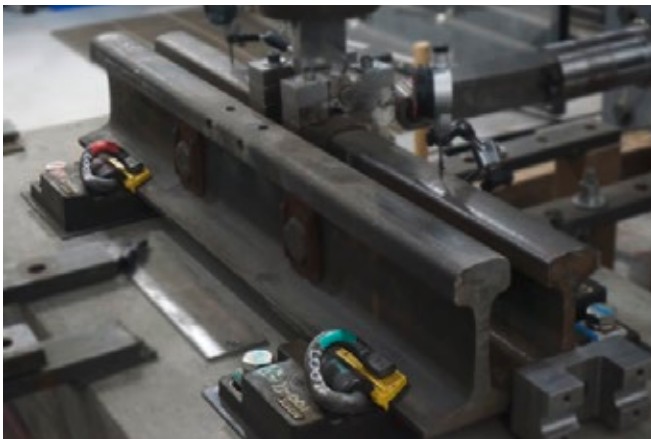


FA RESTRAINING RAIL (FARR) BONDED DIRECT FIXATION FASTENER

Description

Nortrak's Restraining Rail Direct Fixation fasteners are a complement to our special trackwork product line and are a standalone option for mainline installations where a guard rail is required.

This family of fasteners is comprised of several models specially designed to address common variations in rail size, cant, flangeway, and attenuation.



Features and Benefits

- » Family of fasteners provides multiple options depending on the application. Models available include options for 1:40 cant, zero cant, different guard rail sizes, two different flangeways, and three different stiffness levels.
- » Containment design provides fail-safe stability while offering a range of stiffness options for optimal attenuation.
- » Robust top plate reduces rail seat plate stresses and rubber strain compared to typical sandwich-style fasteners.
- » Shares the same hardware as our special trackwork product line, guaranteeing uniformity of OTM across your project.
- » Compact footprint allows flexibility for track design flexibility.
- » Designed, manufactured, and tested in the United States with a fully Buy America compliant supply chain.