



Castings & Moldings

Description

Fast response times, consistent quality and competitive pricing have established Nortrak as the railway industry's "go to" supplier of molded plastic and ductile iron products. Our custom design capability and state-of-the-art production facilities enable us to meet your requirements with minimal lead times.

- » Capability to produce millions of parts with very short lead times and can meet all demands large and small.
- » Fast response to customer requests as all design, tooling, engineering and production are completed in-house.



Pads



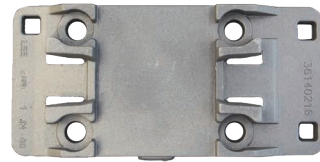
- » Excellent durability
- » Reduced rail seat abrasion
- » Innovative 2 piece design comprising of glass reinforced nylon and polyurethane which isolates vibration
- » “Fixed” pad is captured by plate so that it cannot work itself out of location as seen in many competitors pads
- » Meet or exceed expected cycles
- » Reduced slippage
- » Excellent electrical isolation
- » Excellent attenuation of impact loads caused by track and wheel irregularities

Insulators



- » Impact modified nylon
- » Excellent electrical isolation
- » Reduced wear of other components

Plates



- » Unique designs offer robust performance and greater bearing area
- » Designed in collaboration with the assistance of Class I railroads

Shoulders



- » Nortrak can supply most common shoulders in use today
- » High quality material chemistry closely monitored with in-house testing lab

Thank you very much for your interest. Please visit our web site or contact a Nortrak sales professional if you have any questions or if you need assistance.

Castings & Moldings
30 Aug 2019