



CSV-24 & CSV-34 Transit Switch Machines

CSV-24 POWER SWITCH DRIVE

The small and low profile of CSV-24 houses all of the mechanical and hydraulic-electric modules. Installation into existing earth boxes is possible without necessarily modifying them.

Its compact dimensions (36" x 17 ½ " x 7") with large throw of up to 4¾" inches (120 mm), combined with the working principle of the internal prism lock allows installation into turnouts of all types, with a gauge as small as 35½" (900mm).

The CSV-24 is the best investment: locking device and detector rods can be retrofitted at any time thanks to our modular design. Adaptations to meet different signaling system standards are available: the wiring harness is installed at the top of the machine and a variety of point position indication contacts are available.

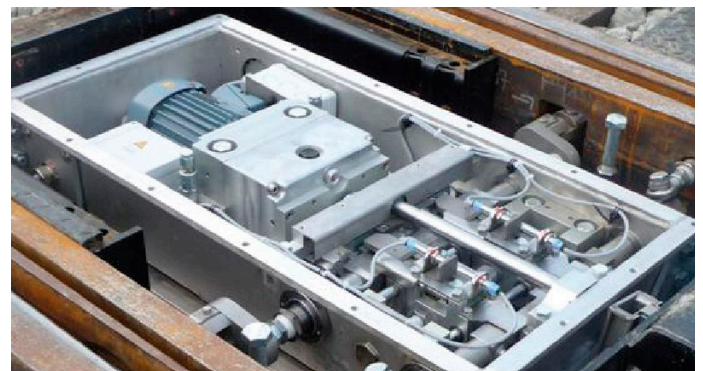
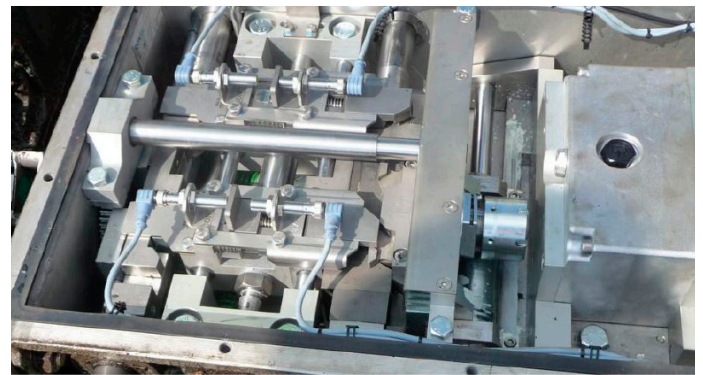
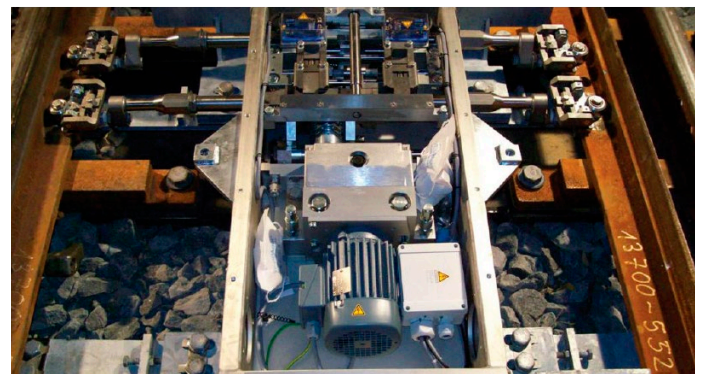
The hydraulic power unit operates quietly and the switch machine's performance is not compromised by the power available. Motors are sized to the power available.

ADVANTAGES CSV-24 (POWER SWITCH DRIVE)

- » Buy America compliant version available
- » Mono-Block Hydraulic Unit: no hydraulic expertise required, no pipes and fittings and no separate components
- » Flood proof: Completely submersible stainless steel case
- » Low demand for maintenance and extended maintenance intervals
- » Simple modular design
- » Possible to install into existing earth boxes
- » Full visual control of all modules is available
- » A diagnostic system is available as an option

YOUR BEST CHOICE FOR POWER APPLICATIONS

- » Tested with more than 1 million cycles under load
- » Extreme low profile design – height only 7" (180 mm)
- » Allows installation on top of standard ties or on concrete slab
- » Locking device made of inductive hardened special steel
- » Low wear and quiet operation



CSV-34 MANUAL SWITCH DRIVE

Our manual switch machine CSV-34 is designed for operation by manual lever or by a trailing vehicle. The manual switch machine is even available for narrow gauge installation between the track at gauges as low as 35½" (900 mm).

The CSV-34 offers the flexibility to be converted from standard to automatic return operation (spring switch operation) by changing the position of a single component.

Our manual switch machine is clearly structured, with a simple and effective design. Two coil springs are provided to secure the points in the end positions and to push the points into a chosen end position after trailing.

High trailing speeds are achieved by mechanically separated adjustable end position dampers.

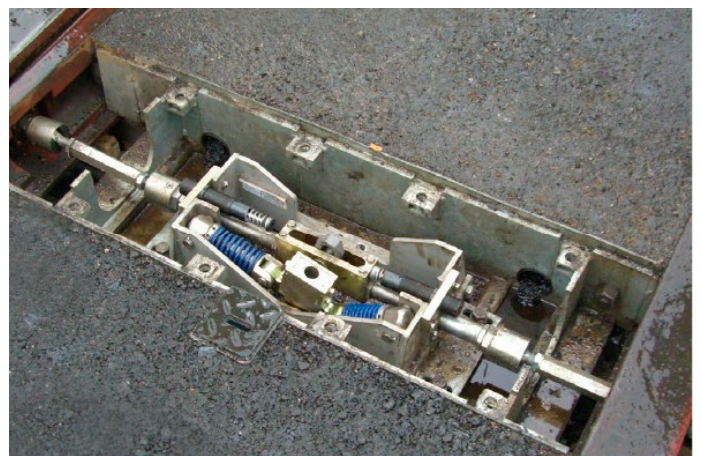
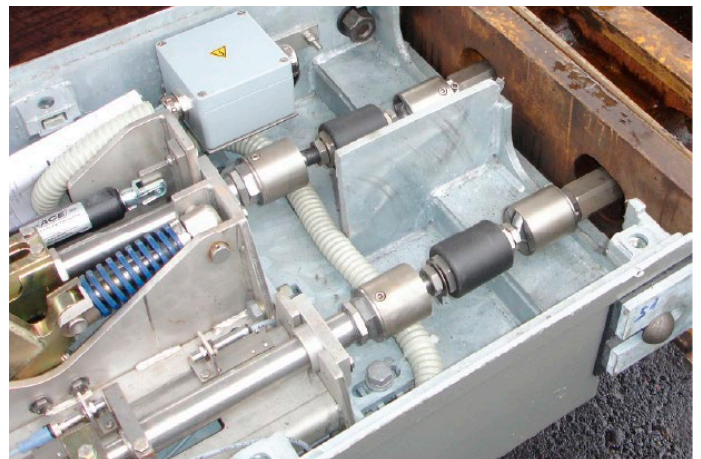
Additional add-on modules are available to monitor the position of the points (two separate detector rods).

ADVANTAGES CSV-34 (MANUAL SWITCH DRIVE)

- » High quality materials such as stainless steel frame and stainless steel rods
- » Easy access to all parts and components
- » Spring and damping settings adjustable on-site
- » Compatible with standard and automatic return switches
- » Possible to convert without any additional parts
- » Low demand for maintenance and extended maintenance intervals
- » Possible to install into existing earth boxes
- » All mechanical parts are made of inductive hardened special steel

YOUR BEST CHOICE FOR MANUAL OPERATION

- » Manual setting by a recess acting directly on the mechanical system
- » Force locking of both points
- » Trailable
- » Double spring setting and holding device
- » Stainless steel connecting parts, each one with two universal joints
- » Maintenance free bushings
- » Available for standard and automatic return applications
- » Adjustable hydraulic dampers for smooth setting of switch points, individually adjustable for either direction



USA

Birmingham, AL
Cheyenne, WY
Chicago Heights, IL
Decatur, IL
Newton, KS
Pueblo, CO

CANADA

Richmond, BC

MEXICO

NORTRAK-DAMY
Guadalajara, JA
www.damy.com

In-house design and manufacture of railway system solutions encompassing:

- » custom engineering
- » premium rail
- » special trackwork
- » concrete ties
- » direct fixation fasteners
- » rail pads, insulators and ballast mat
- » switch machines
- » castings and plastic moldings

CSV-24 & CSV-34 Brochure Aug 2020

voestalpine Railway Systems Nortrak

www.voestalpine.com/nortrak

voestalpine

ONE STEP AHEAD.