

SAFETY BARRIERS

KREMSBARRIER 1 RH2

Roadside Restraint System with lower guardrail on civil structures

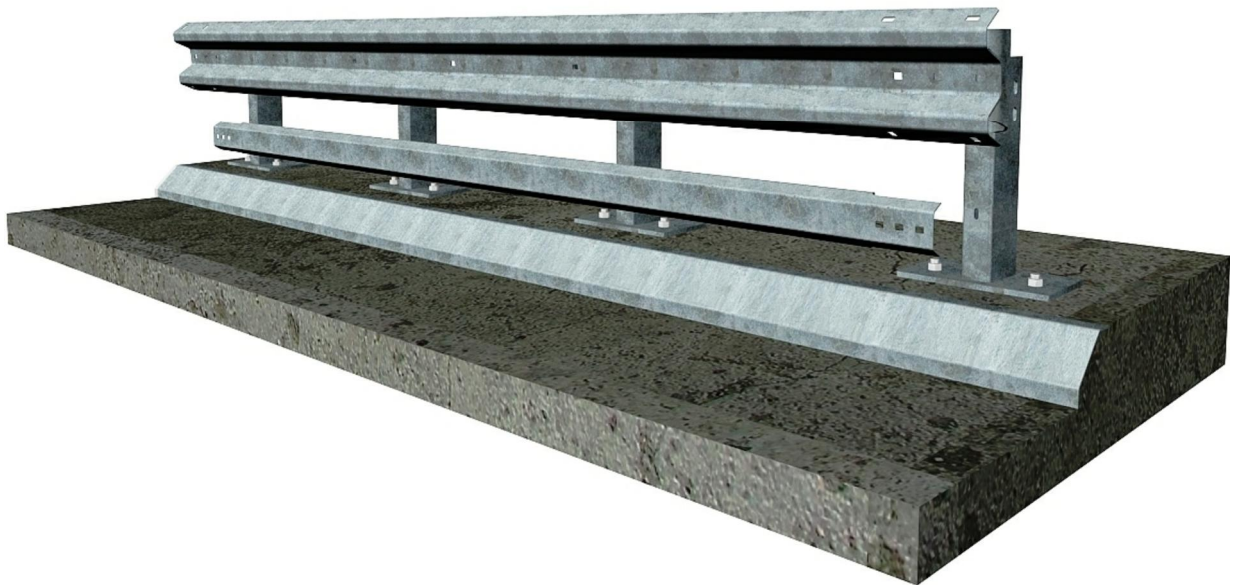
EG certificate of conformity: 0044-CPD-2010

product specification sheet C102/1



tested in accordance with EN 1317-2:

containment level:	H2
impact severity level:	B
working width:	W3
system test length:	15 sections or 57,00m, without driving



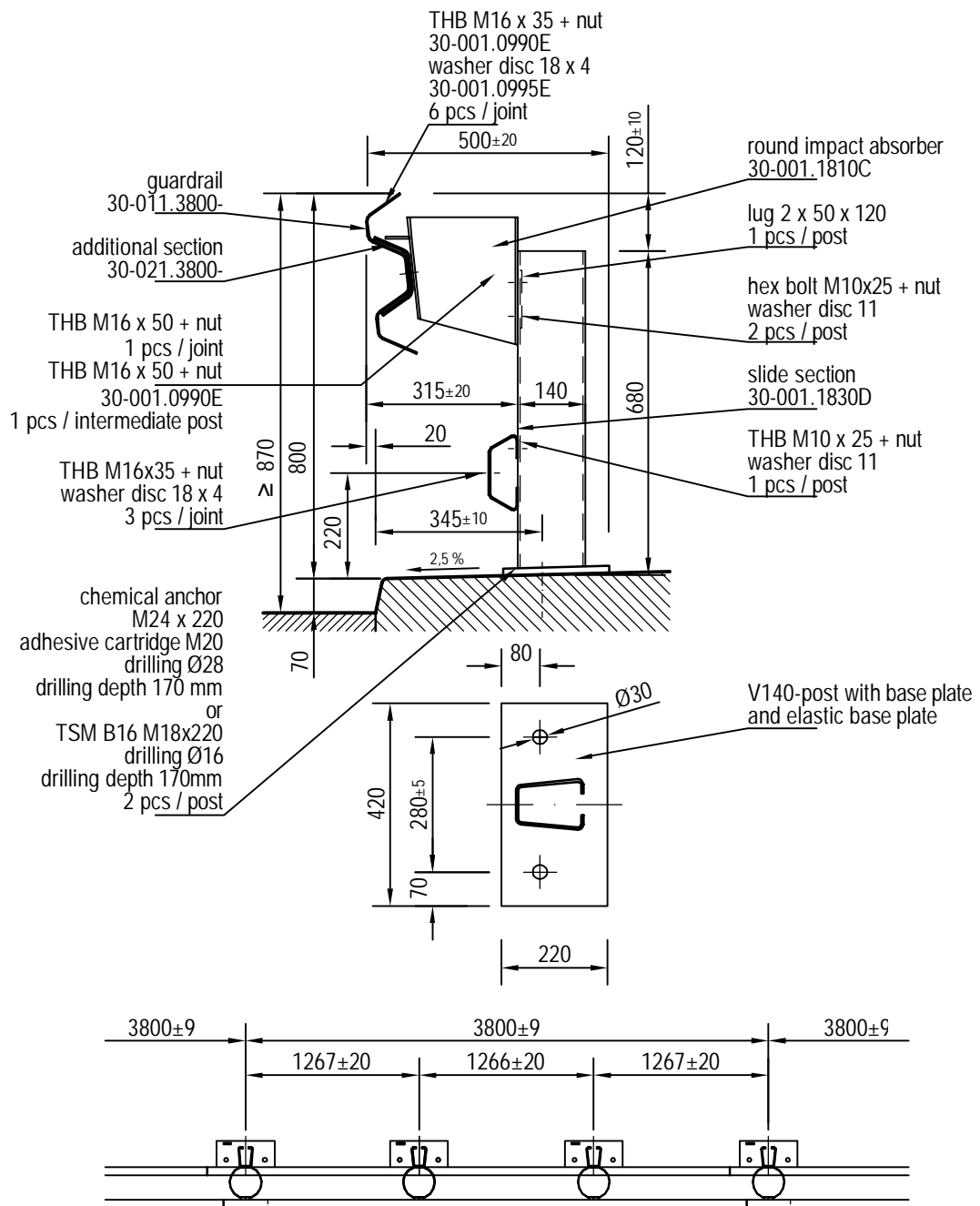
01/2015

SAFETY BARRIERS

KREMSBARRIER 1 RH2

Roadside Restraint System with lower guardrail on civil structures

product specification sheet C102/2



01/2015

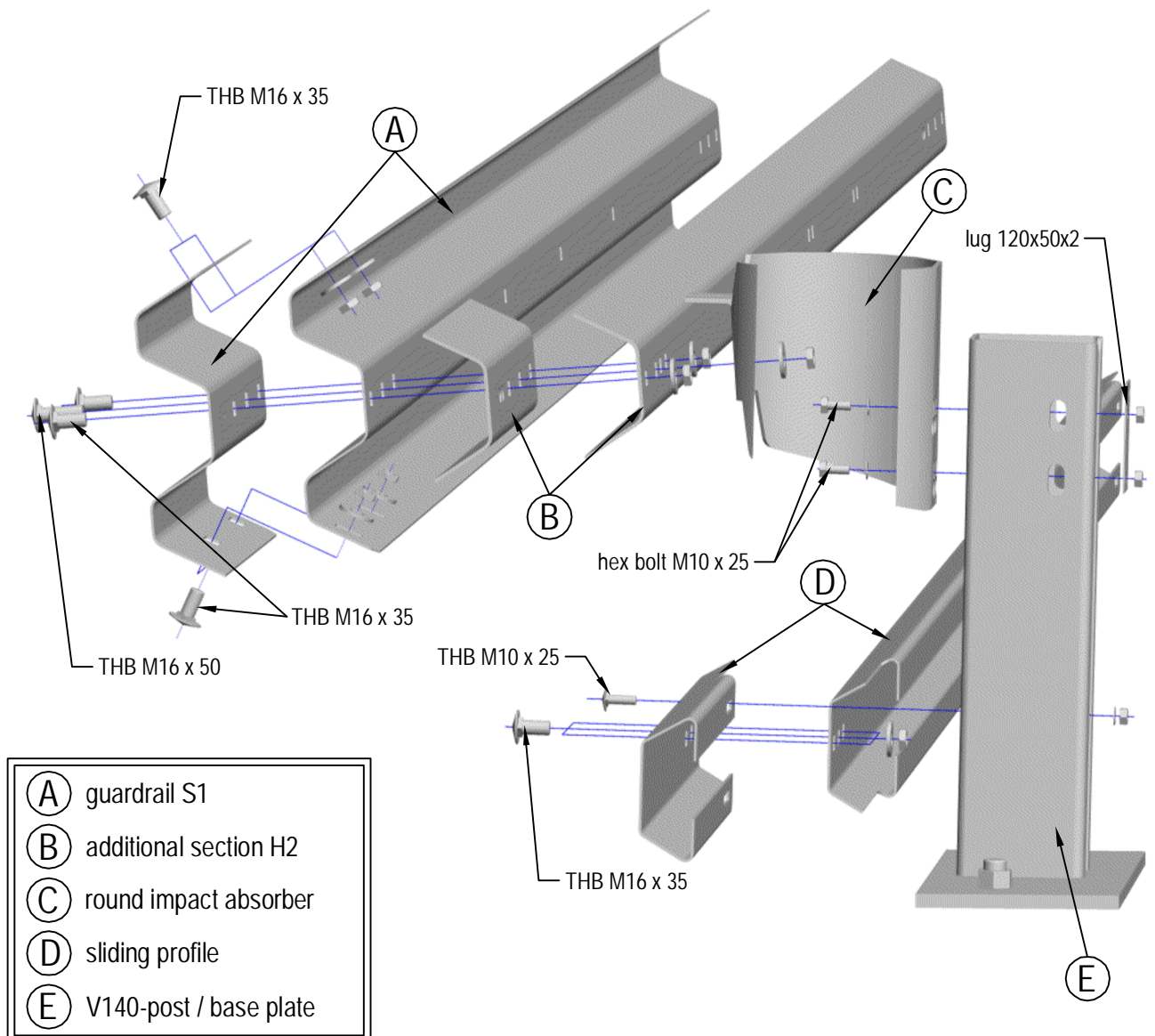
SAFETY BARRIERS

KREMSBARRIER 1 RH2

Roadside Restraint System with lower guardrail on civil structures

product specification sheet C102/3

installation drawing



01/2015

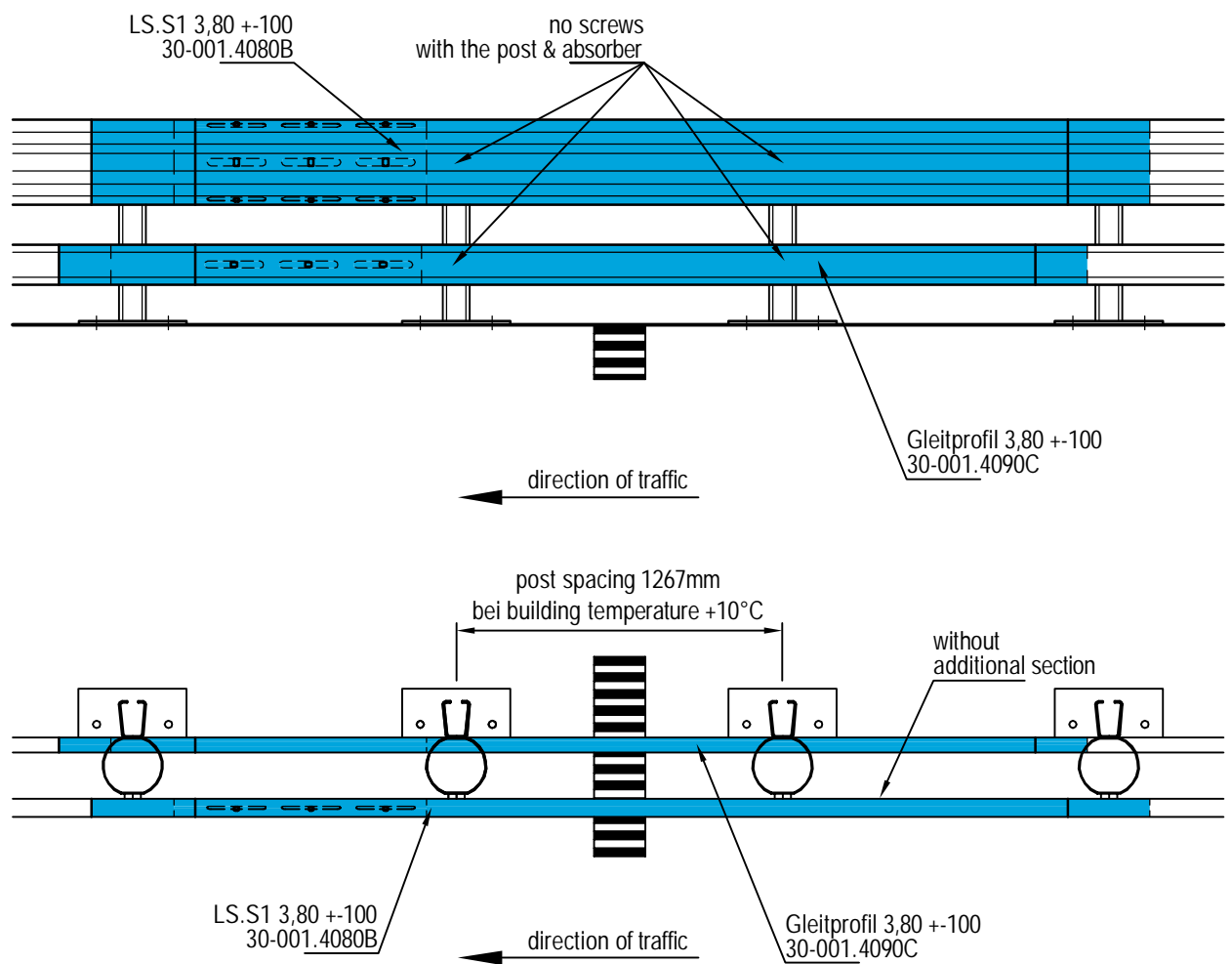
SAFETY BARRIERS

KREMSBARRIER 1 RH2

Roadside Restraint System with lower guardrail on civil structures

product specification sheet C102/5

dilatation +-100



01/2015