

iFIX

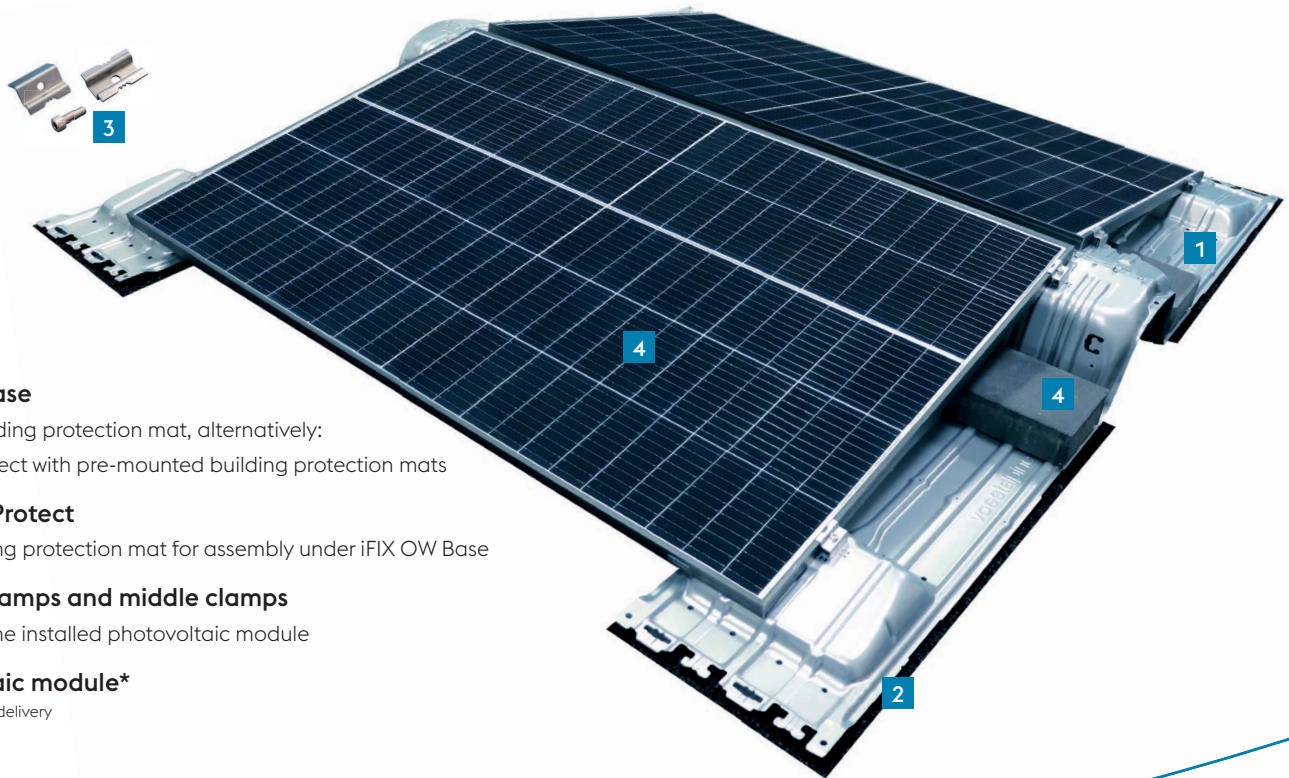
One Part – One Click

iFIX Product Catalog | Page 1/3 | Status 12/2023

IFIX OW PRODUCT CATALOG V2022

New:
The alpin support

The smart substructure for photovoltaics systems



1 iFIX OW Base

Without building protection mat, alternatively:
iFIX OW Protect with pre-mounted building protection mats

2 iFIX Base Protect

Large building protection mat for assembly under iFIX OW Base

3 iFIX end clamps and middle clamps

Tailored to the installed photovoltaic module

4 Photovoltaic module*

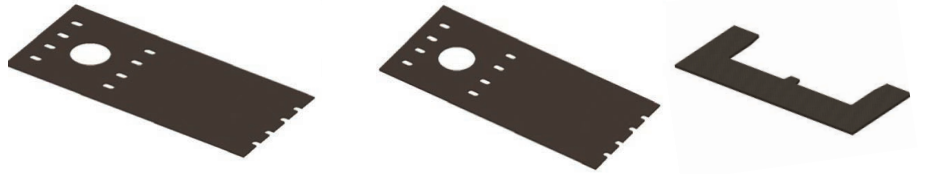
*not included in delivery

iFIX substructure



	iFIX OW Base	iFIX OW Protect	iFIX OW Alu-Protect
Description	without pre-mounted building protection mats 1.210x376mm	with pre-mounted building protection mats, for roofs with solid insulation 1.210x376mm	with pre-mounted aluminum laminated protection mats, for roofs with solid insulation 1.210x376mm
Product number	102211	102221	102222
Packing unit	150	150	150

iFIX building protection mats



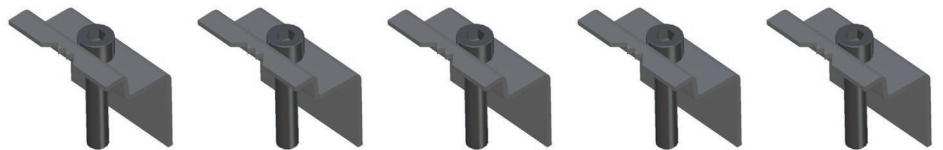
	iFIX Base Protect	iFIX Base Alu-Protect	iFIX Protector
Description	for roofs with soft insulation 1015 x 430 x 6 mm	aluminum laminated, for roofs with soft insulation 1015 x 430 x 6 mm	aluminum laminated, for steel sheets at end of row 155 x 430 x 6 mm
Product number	102131	102132	102138
Packing unit	300	300	100

iFIX middle clamps

	iFIX middle clamps
Description	for clamping between PV modules; with 30-40 mm screws
Product number	102152
Packing unit	150



iFIX end clamps

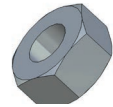
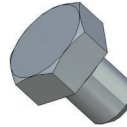
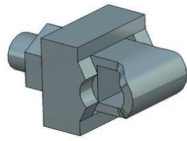


	iFIX end clamp 30	iFIX end clamp 32	iFIX end clamp 35	iFIX end clamp 38	iFIX end clamp 40
Description	for clamping PV modules at the end of a row; screws included				
	width: 50 mm height: 30 mm	width: 50 mm height: 32 mm	width: 50 mm height: 35 mm	width: 50 mm height: 38 mm	width: 50 mm height: 40 mm
Product number	102153	102154	102155	102156	102157
Product unit	150	150	150	150	150



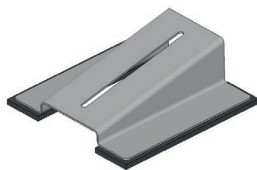
More information, installation manual, and dealers: voestalpine.com/iFIX/en

iFIX lightning protection



	iFIX lightning protection connector	iFIX lightning connection screw	iFIX lightning connection nut
Description	to connect lightning current carrying PV modules to the lightning protection	hexagonal, M 10 x 12, for lightning current carrying connections in the field	hexagonal, M 10, for lightning current carrying connections in the field
Product number	102161	102162	102163
Packing unit	100	200	100

iFIX Alpin



	iFIX Alpin low	iFIX Alpin high	iFIX T-Nut M8
Description	Low support for high snowloads with pre-mounted building protection mat, aluminum laminated	High support for high snowloads with pre-mounted building protection mat, aluminum laminated	for end clamp for attachment to the PV module frame
	220x212x60 mm	256x243x140 mm	16x16x6 mm
Product number	102185	102180	102188
Packing unit	400	200	100

iFIX Spacer

	iFIX Spacer
Description	spacer, 2.250 mm
Product number	102141
Packing unit	10

