

iFIX

One Part – One Click

Photovoltaic flat roof installation system for east-west orientation

Technical data sheet | Page 1/2 | Status 05/2022

iFIX OW EAST-WEST VERSION 2021 (VERSION 2022)*

The smart substructure for photovoltaic installations

ONE technology. ONE material. ONE component.

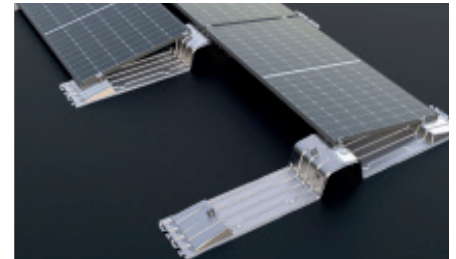
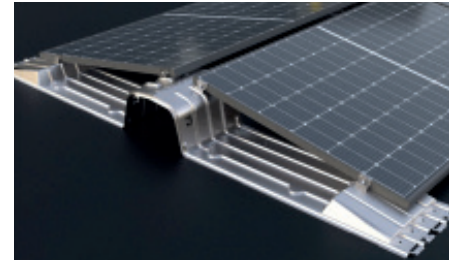
The highly sophisticated substructure is designed for flat roofs, even those with a low load-bearing reserve. Pressed from a single plate, the fixing system is constructed from corrosion-resistant steel. It combines substructure and PV module fixation points and reduces assembly time on the roof to a minimum.

Convincing advantages:

- » Low logistics costs due to high packing density
- » Quick and simple assembly
- » Large contact area, minimal surface pressure, also for soft insulation material

* Version 2022, available from 10/2022

Features	Characteristics
Field of application	<p>Flat roofs with maximum roof pitch of 3° with and without parapets</p> <p>Surfaces: Sheetting or bitumen membranes, concrete, gravel or green roofs</p> <p>No permanent standing water</p> <p>Wind zones 1 to 3 (at least 3 km from the coast)</p> <p>Max. peak velocity pressure 1,400 N/m²</p> <p>Snow loads up to 3.8 kN/m²</p> <p>Building heights of up to 25 m</p> <p>Minimum distance to roof edge 0.5 m</p>
Surface pressure	Contact area per mounting frame: max. 0.28 m ² consequently minimal surface pressure
Module orientation	horizontal
Module installation angle	10°
Mountable PV module with frame	<p>Frame dimensions:</p> <p>min. 1,640 x 990 mm</p> <p>max. 2,100 x 1,135 mm (x 1,145 mm)*</p> <p>Max. area of 2.17 m² is key determinant</p> <p>Height 30 to 40 mm</p>
Modular dimension in rows	<p>PV module length +20 mm</p> <p>Separation after 7 modules</p>
Modular dimension row to row	<p>1,185 mm (1,210 mm)*</p> <p>No separation necessary</p>
Height without PV module	227 mm
Material	<p>Steel sheet: corrosion-resistant zinc-magnesium coated steel sheet</p> <p>Module clamps: special steel</p>
Statics	Statics according to Eurocode and wind canal reports



* Version 2022, available from 10/2022

All information specified in this brochure is according to the current status of our knowledge and experience. As printed materials cannot be updated, please refer to our website for the most recent version. Subject to technical changes, printing, and typesetting errors. More detailed information is available in the installation instructions.

Find out more about the iFIX OW EAST-WEStand go to www.voestalpine.com/iFIX



Sales: