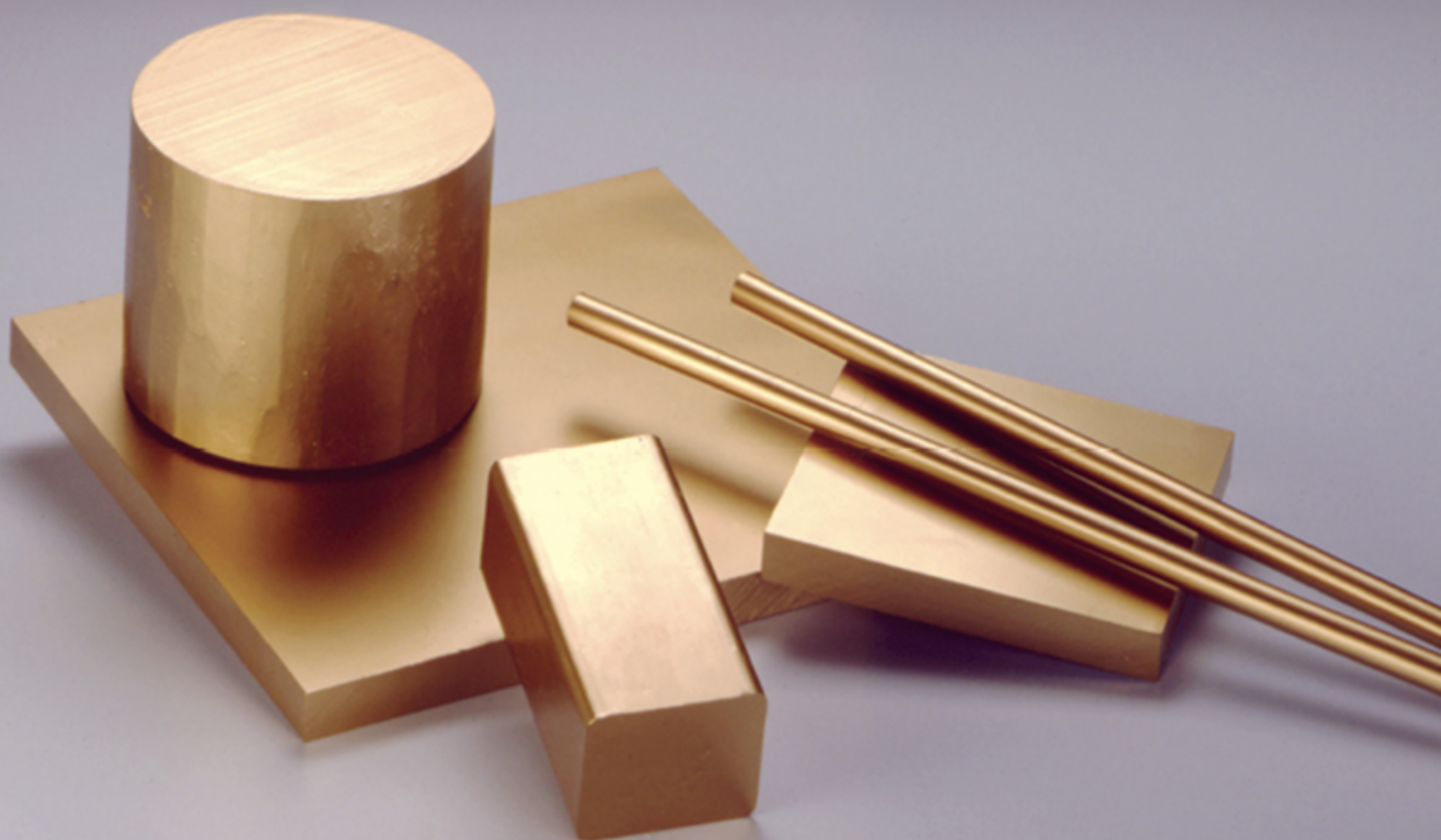


**MOLDMAX®**



**MATERION**



## MOLDMAX® PLASTIC TOOLING ALLOYS

---

# MOLDMAX® THERMAL MANAGEMENT SOLUTIONS

## HIGH STRENGTH, HIGH CONDUCTIVITY ALLOYS FOR THE PLASTICS MOLD INDUSTRY

All MoldMAX products are high performance alloys specifically designed for the plastic processing industry. These alloys offer a unique combination of thermal conductivity and strength that provides significant advantages for the molding process, including:

- » 15 – 50 % shorter cycle time
- » Improved plastic part dimensional control
- » Better parting line maintenance
- » Corrosion and wear resistance
- » Excellent machinability



The MoldMAX product line offers a variety of mold alloys that can fit any application requirement:

**MOLDMAX HH® · MOLDMAX LH® · MOLDMAX XL® · MOLDMAX V® · PROTHERM®**

### Compare MoldMAX and Other Plastic Tooling Alloys

PLASTIC TOOLING MATERIALS	ROCKWELL HARDNESS (HRC)	THERMAL CONDUCTIVITY (BTU/FT HR °F)	CHARPY V-NOTCH IMPACT STRENGTH	YIELD STRENGTH (ksi)	TENSILE STRENGTH	EXPANSION COEFFICIENT (10-6/IN/IN/°F)
420 Stainless	50	10	5-10	200	250	6.1
H-13 Tool Steel	45-50	15	8-14	200	250	7.1
<b>MoldMAX® HH</b>	<b>40</b>	<b>75</b>	<b>4</b>	<b>145</b>	<b>170</b>	<b>9.7</b>
<b>MoldMAX® XL</b>	<b>30</b>	<b>40</b>	<b>15</b>	<b>105</b>	<b>115</b>	<b>9.3</b>
<b>MoldMAX® LH</b>	<b>30</b>	<b>90</b>	<b>12</b>	<b>110</b>	<b>140</b>	<b>9.7</b>
<b>MoldMAX® V</b>	<b>28</b>	<b>92</b>	<b>8</b>	<b>105</b>	<b>125</b>	<b>9.7</b>
P-20 Tool Steel	30	17	25	120	140	7.1
<b>PROtherm®</b>	<b>20</b>	<b>145</b>	<b>40</b>	<b>90</b>	<b>105</b>	<b>9.8</b>
C18000	16	120	35	65	96	9.7
Alumold®*	B88	95	30	75	80	12.9
QC-10®**	B90	92.2		66-76	74-80	13.7

H-13 and 420 SS achieve hardness after heat treatment. All the other materials are supplied in the hardness indicated.

\* Registered trademark of Constellium

\*\* Registered trademark of Arconic Inc.



## THERMAL CONDUCTIVITY ADVANTAGE

Mold designs that optimize the superior combination of thermal conductivity and strength of MoldMAX alloys will provide rapid, uniform and controlled heat removal from the plastic part.

The immediate benefit is less in-mold and post-mold warpage of plastic parts, as well as shorter cycle time and better dimensional control.

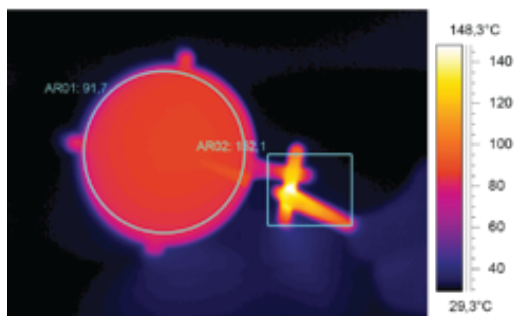
In addition, hot runner and manifold designs that include MoldMAX alloys will result in more uniform temperature control of the plastic melt and higher quality plastic parts.

## THE MOLDMAX® ALLOY ADVANTAGE IN INJECTION MOLDING

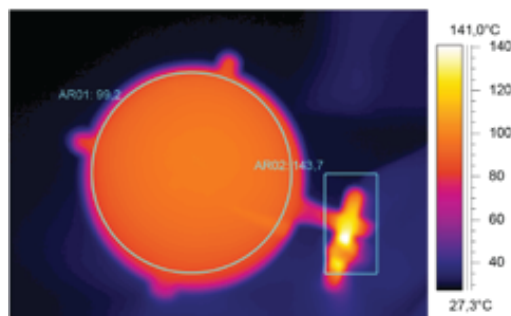
MoldMAX alloy is engineered for use as the core material in concert with steel mold bases and cavities. One of the most important functions of an injection mold is to act as a heat exchanger. The core performs the majority of the heat removal in the typical mold. MoldMAX alloys with up to 10 times the thermal conductivity of tool steel, reduces cycle time 15 – 50%. The cost savings of these reductions can be substantial.

“MoldMAX alloy with up to 10 times the thermal conductivity of tool steel, reduces cycle time 15 – 50%.”

## COOLING TIME COMPARISON STEEL VS. MOLDMAX HH®



Mold Cooling Time: 10 sec. MoldMAX HH®  
Tool (part temperature= 92°C)



Mold Cooling Time: 25 sec. h11 Tool (part temperature= 99°C)

## HEALTH & SAFETY

Handling copper beryllium in solid form poses no special health risk. Like many industrial materials, beryllium-containing materials may pose a health risk if recommended safe handling practices are not followed. Inhalation of airborne beryllium may cause a serious lung disorder in susceptible individuals. The Occupational Safety and Health Administration (OSHA) has set mandatory limits on occupational respiratory exposures. Read and follow the guidance in the Safety Data Sheet (SDS) before working with this material.

For additional information on safe handling practices or technical data on copper beryllium, contact Materion Technical Service Department at 1-800-375-4205.

---

## ABOUT MATERION

Materion Corporation is a global leader in advanced material solutions and services that improve the world. We serve customers in more than 50 countries with operating, service center and major office locations throughout North America, Europe and Asia. Materion Corporation common stock trades on the New York Stock Exchange under the symbol MTRN.





# LOCATIONS

## USA

### **voestalpine High Performance Metals LLC**

2505 Millennium Drive

Elgin, IL 60124

T. +1 (630) 883-3000

Email: [hpm-sales.usa@voestalpine.com](mailto:hpm-sales.usa@voestalpine.com)

[www.voestalpine.com/hpm/usa](http://www.voestalpine.com/hpm/usa)

### **voestalpine High Performance Metals LLC**

20500 Carrey Rd.

Walnut, California 91789, USA

T. + 1 (800) 368-3376

Email: [hpm-sales.usa@voestalpine.com](mailto:hpm-sales.usa@voestalpine.com)

[www.voestalpine.com/hpm](http://www.voestalpine.com/hpm)

## CANADA

### **voestalpine High Performance Metals Ltd.**

2595 Meadowvale Blvd.

Mississauga, ON L5N 7Y4

T. +1 (800) 665-8335

Email: [sales.canada@voestalpine.com](mailto:sales.canada@voestalpine.com)

[www.voestalpine.com/hpm/canada](http://www.voestalpine.com/hpm/canada)

## MÉXICO

### **voestalpine High Performance Metals S.A. de C.V.**

Cerrada de la Noria No. 200 Int. A-14

Parque Industrial Querétaro, C.P. 76220.

Querétaro, México

T. +52 (442) 689-5900

Email: [ventas.mexico@voestalpine.com](mailto:ventas.mexico@voestalpine.com)

[www.voestalpine.com/hpm/mexico](http://www.voestalpine.com/hpm/mexico)