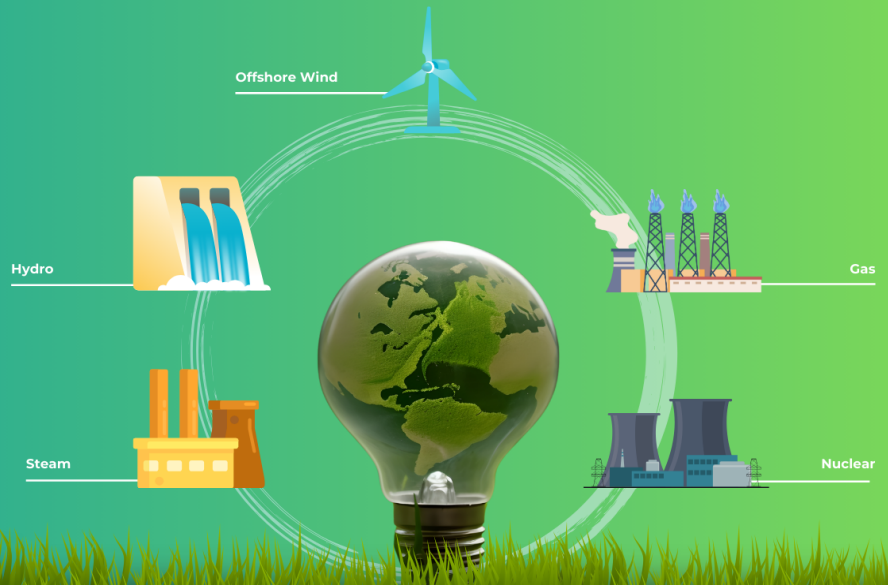


POWER GENERATION

Steel Castings That Unleash Energy



Built to last, developed for the future!

Power Generation factsheet EN | 07/2025

FOUNDRY-PRECISION FOR THE ENERGY OF TOMORROW

Whether hydro, gas, steam, nuclear or offshore wind – our steel castings ensure reliable power generation.

With decades of experience, state-of-the-art production methods and maximum precision, we manufacture components that deliver top performance even under extreme conditions. Our solutions combine quality, durability and technological innovation. Whether for high-pressure turbines, steam power plants or renewable energies - we manufacture customized cast solutions that drive the future.

Typical areas of application in our segments:

- » Hydro
- » Gas
- » Steam
- » Nuclear
- » Offshore Wind

ADVANTAGES



Increased efficiency

- » Full-Service - from the casting process to finishing
- » Prototype development and series production
- » Application of the newest technologies such as 3D sand printing and robot welding



Quality

- » Specially optimized materials
- » High temperature and pressure resistance for extreme operating conditions
- » Durable components for maximum uptime and minimum maintenance



Sustainability

- » Conservation of resources through centralized production, minimization of transport routes and CO2-optimized processes in our production

fastlane®

By using the latest technologies and prioritizing production scheduling, we guarantee up to 60 % faster and reliable delivery times.

Our fastlane®-Service represents a significant advancement in casting production by increasing efficiency, improving quality, and simultaneously promoting sustainable practices.



TECHNOLOGY

» 3D Sand Printing (3DSP)

Our innovative 3D printing process enables the production of highly complex castings without the need for traditional patterns. This precise and efficient method for manufacturing custom sand molds is ideal for intricate and specialized cast components.

» Robot Welding

With our certified, fully automated MAG welding process, we set new standards in manufacturing. Advanced techniques like laser cladding, integrated into state-of-the-art robotic systems, are propelling production technology into a new era.

» Digital Foundry

Through our ongoing "Digital Foundry" program, we continuously enhance our processes - driving efficiency, precision, and innovation in casting production.



voestalpine Foundry Group

As an international player in the foundry industry, voestalpine Foundry Group, with its sites in Linz (AUT), Traisen (AUT) and the joint venture in China, has made a name for itself worldwide.

With a broad portfolio of steel castings, including nickel-based alloys, it offers customized solutions in areas ranging from energy production, such as hydro, offshore/wind or oil & gas, to machinery and railroad systems. By using state-of-the-art technologies and increasingly focusing on climate-friendly production processes, voestalpine Foundry Group is the first choice for cast products of the highest quality, in a weight range from a few kilograms to 200 tons.

CONTACT



HELMUT KECK

T. +43/664/61 56 956
Helmut.Keck@voestalpine.com

Please find further
information at:



voestalpine Foundry Group

voestalpine-Straße 3
4020 Linz, Austria
www.voestalpine.com/giesserei-gruppe/en

voestalpine

ONE STEP AHEAD.