

# SUSTAINABLE CONSTRUCTION FUTURE-PROOF DESIGN

## colofer® FOR RESPONSIBLE ARCHITECTURE

With colofer®, voestalpine sets benchmarks for sustainable construction. This organically coated steel strip for facade and roofing solutions combines architectural freedom, lasting aesthetics, and ecological performance. For projects where quality is visible and sustainability is measurable, colofer® is the solution.

colofer® and voestalpine support architects and builders in implementing sustainable building concepts and meeting key DGNB criteria.



### Durability

The organically coated steel strip provides high-quality aesthetic solutions for demanding building envelopes.



### Locally produced

As an integrated steel plant, voestalpine controls and performs all steps from ore to organic coating.



### Fully certified

The Linz production site meets qualified environmental and sustainability standards: ISO 14001, EMAS III, and ResponsibleSteel™ Site Certification.



### Basis for LCAs (ENV1.1)

Our externally verified Environmental Product Declaration (EPD) forms the basis for transparent, reliable Life Cycle Assessment.



### Health and environment (ENV1.2)

colofer® complies with RoHS and REACH requirements and features a very low VOC content.



### Responsible supply chains (ENV1.3)

Our strict risk and supplier management safeguards human rights and fair working conditions.



### Circularity (TEC1.6)

100 % recyclable steel with 25 % recycled content—a clear contribution to circular material loops.

## RESPONSIBILITY MEETS STEEL

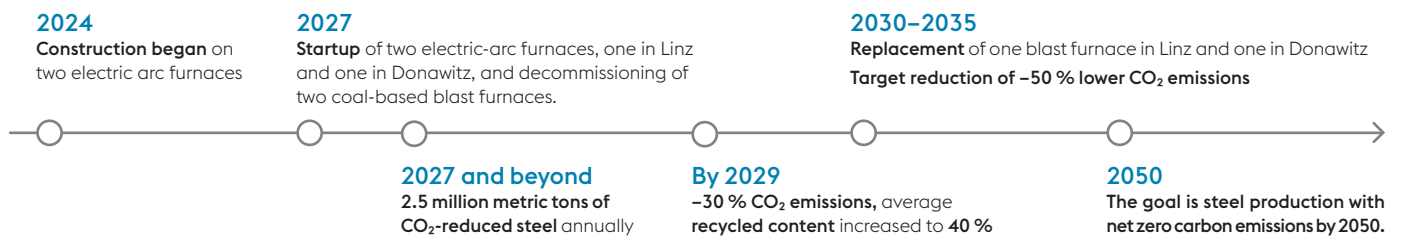
voestalpine follows a clear, actionable road map to decarbonize steel production. The goal is net-zero CO<sub>2</sub> emissions by 2050. greentec steel represents this consistent transformation—focusing on real emission reductions and long-term sustainable material solutions.

For the construction industry, this means colofer® relies on a future-oriented steel route and supports the gradual decarbonization of building projects.



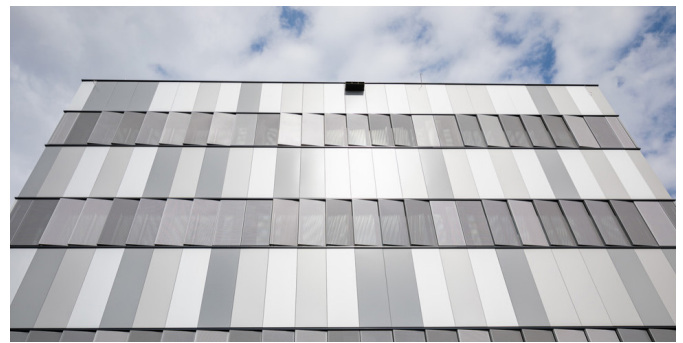
PREMIUM QUALITY  
WITH REDUCED  
CARBON FOOTPRINT

### Our clear plan



### We build on greentec steel ourselves.

The carbon impact made visible in the example of voestalpine Works Building 53: Using 18 metric tons of colofer® greentec steel Edition saves roughly four metric tons of CO<sub>2</sub> compared to conventional material—equivalent to the emissions of driving about 25,000 km in an average combustion-engine car.



The information and product properties contained in this printed material are non-binding and serve the exclusive purpose of technical orientation. They do not replace individual consultation provided by our sales and customer service teams. Information and product properties provided in this data sheet shall not be deemed guaranteed characteristics unless this has been agreed upon individually. Technical changes reserved. Errors and misprints excepted. No part of this publication may be reprinted without explicit written permission by voestalpine Stahl GmbH.

Please find out more about colofer® and visit us at [www.voestalpine.com/colofer/en](http://www.voestalpine.com/colofer/en)



voestalpine Steel Division  
voestalpine-Straße 3  
4020 Linz, Austria  
produktmanagement@voestalpine.com  
[www.voestalpine.com/colofer/en](http://www.voestalpine.com/colofer/en)

voestalpine  
ONE STEP AHEAD.