

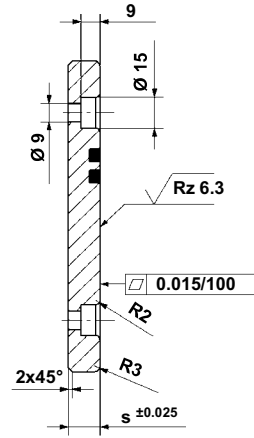
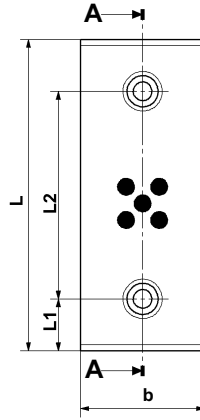
Gleitplatten / WF 750/1A mit Festschmierstoff

Wear plates / WF 750/1A with lubricant

Gleitrichtung
Slide direction



7.25



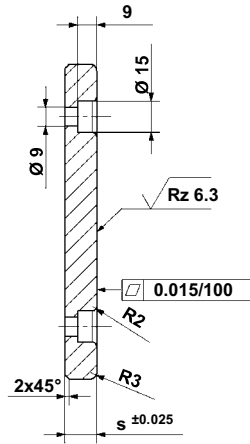
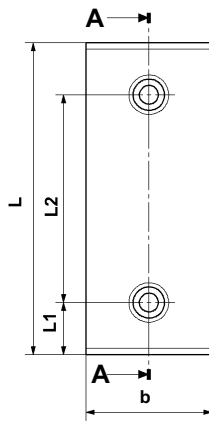
Schnitt A-A
View A-A

WF 750/1A Ident-Nr. Code-No.	b x L x s	L1	L2
19718	40 x 75 x 15	15	45
19719	40 x 100 x 15	25	50
19720	40 x 125 x 15		75
19721	40 x 150 x 15		100
19722	60 x 75 x 15	15	45
19723	60 x 100 x 15	25	50
19724	60 x 125 x 15		75
19725	60 x 150 x 15		100

Maße ohne Toleranzangabe DIN ISO 2768 mittel
Measurements without a tolerance specification - DIN ISO 2768 medium

Gleitplatten / Stahl gehärtet ohne Festschmierstoff

Wear plates / steel hardened without lubricant



Schnitt A-A
View A-A



Gleitrichtung
Slide direction

7.25

Stahl gehärtet Ident. Nr. Steel hardened Code-No	b x L x s	L1	L2
19760	40 x 80 x 15,1	25	30
19761	40 x 100 x 15,1		50
19762	40 x 125 x 15,1		75
19763	40 x 160 x 15,1		110
19764	60 x 80 x 15,1		30
19765	60 x 100 x 15,1		50
19766	60 x 125 x 15,1		75
19767	60 x 160 x 15,1		110

Maße ohne Toleranzangabe DIN ISO 2768 mittel
Measurements without a tolerance specification - DIN ISO 2768 medium