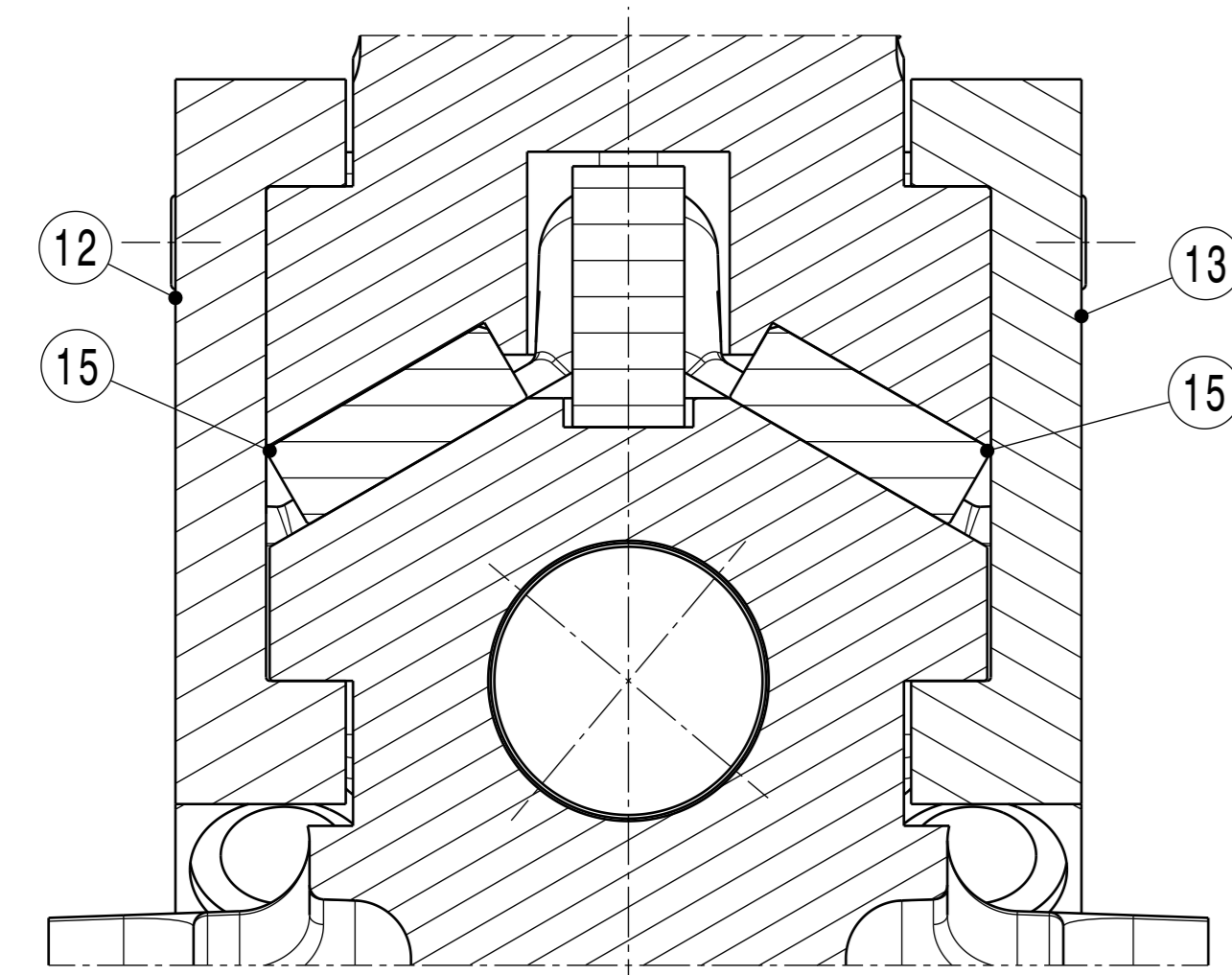
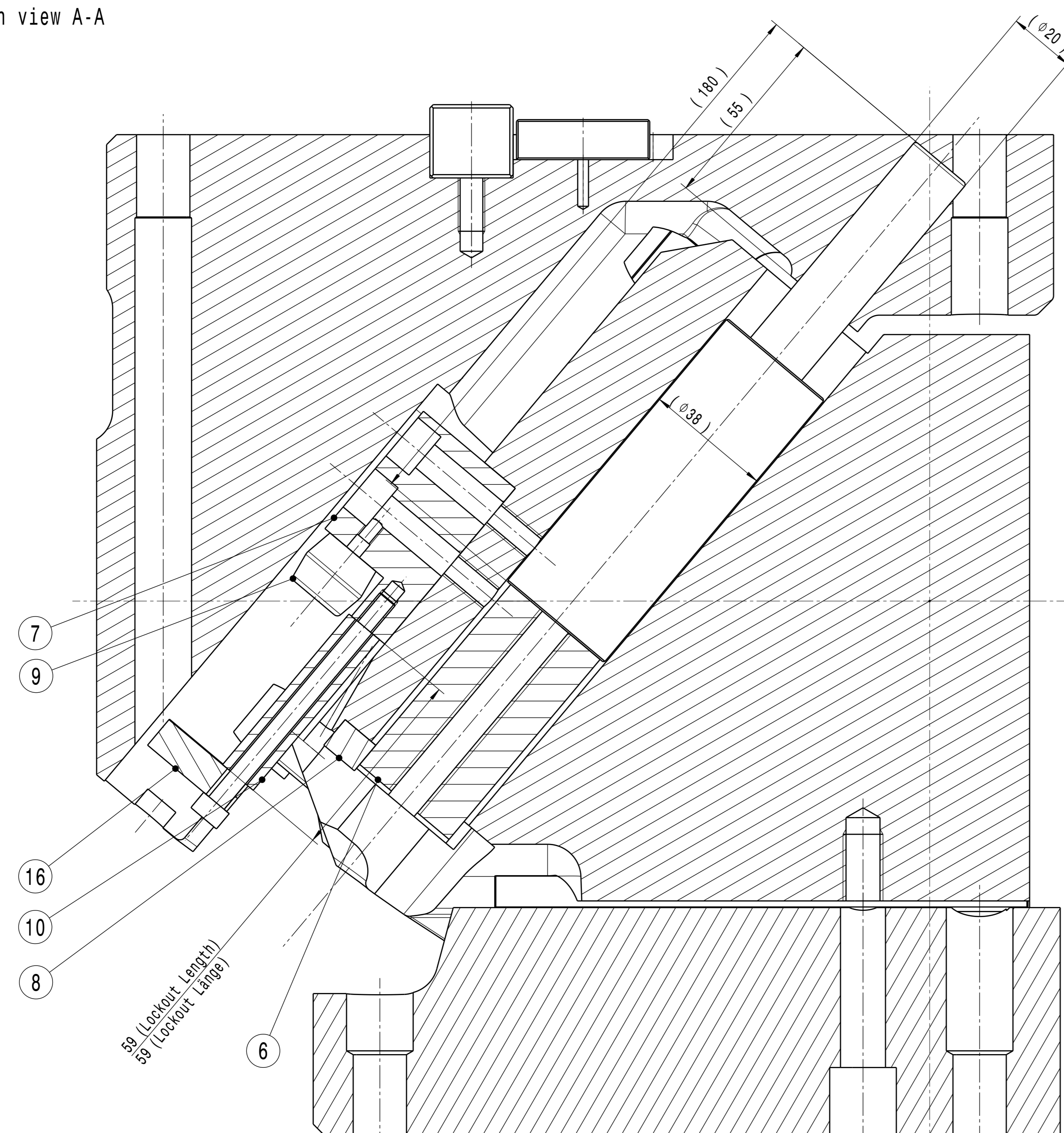


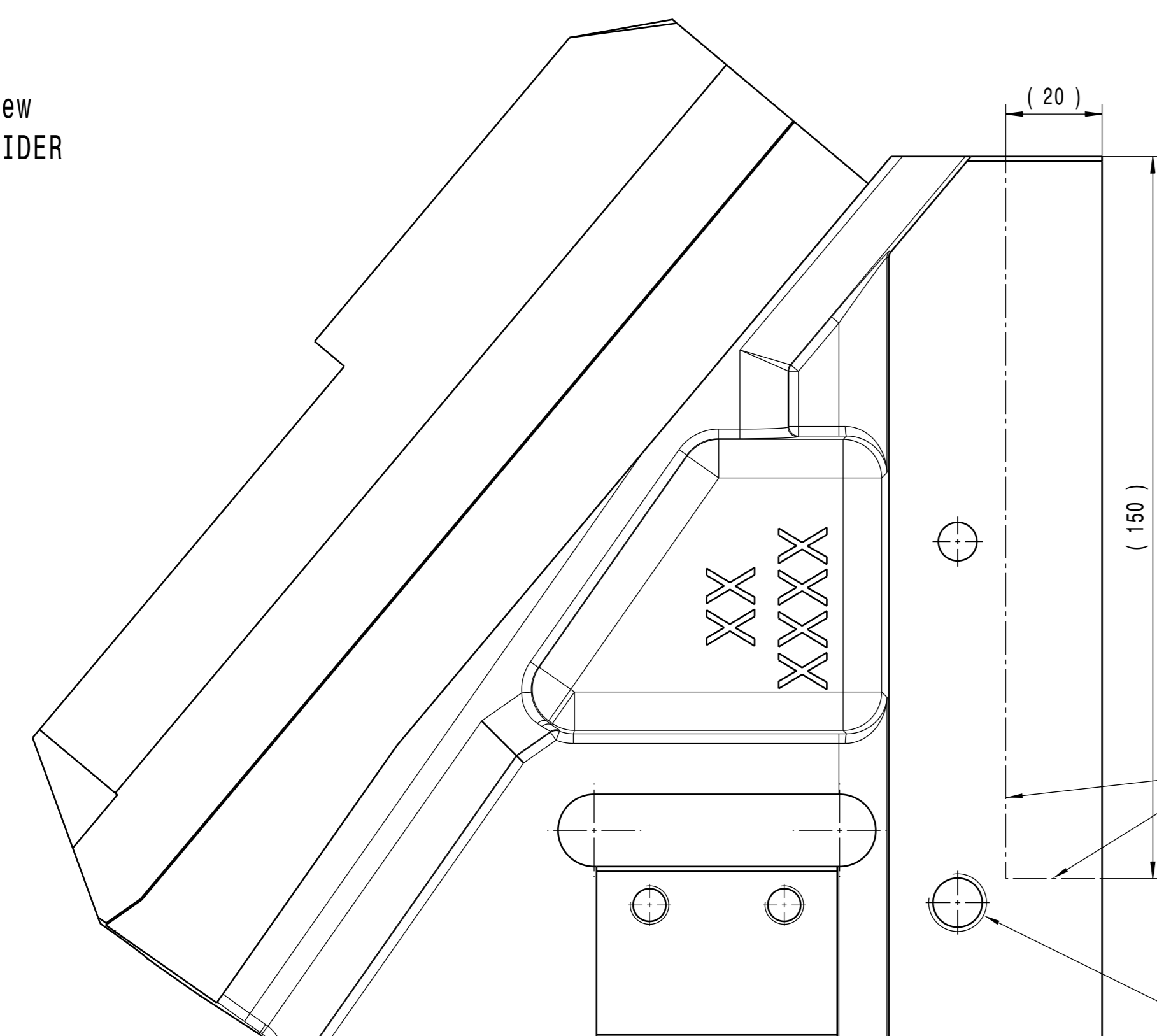
Section view C-C



Section view A-A



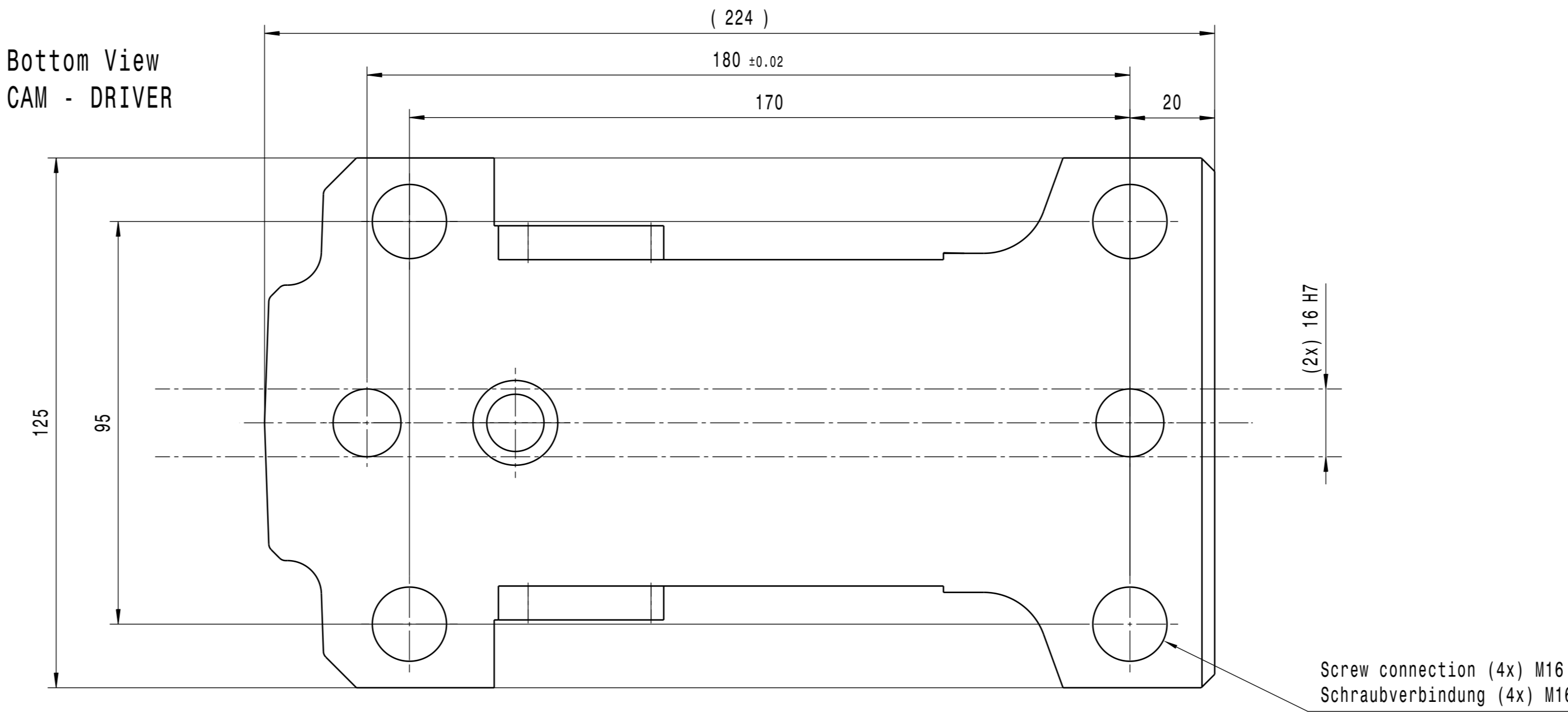
Front view
CAM - SLIDER



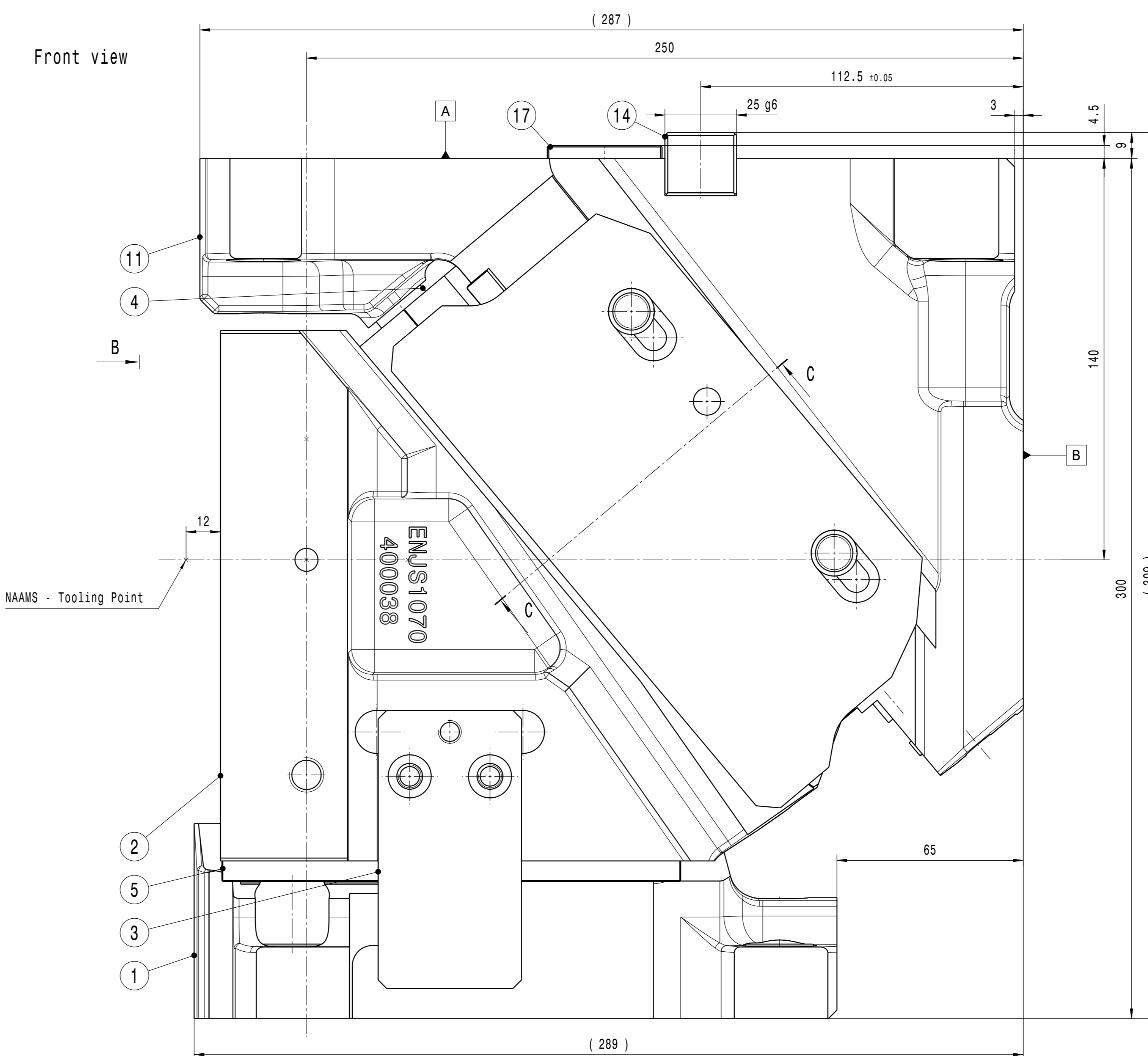
Option Pre Machining: Maximum exemptable area
Option Anarbeitung: Maximal freistellbarer Bereich

Tapped holes for transport purposes M12x27
Transportgewinde M12x27

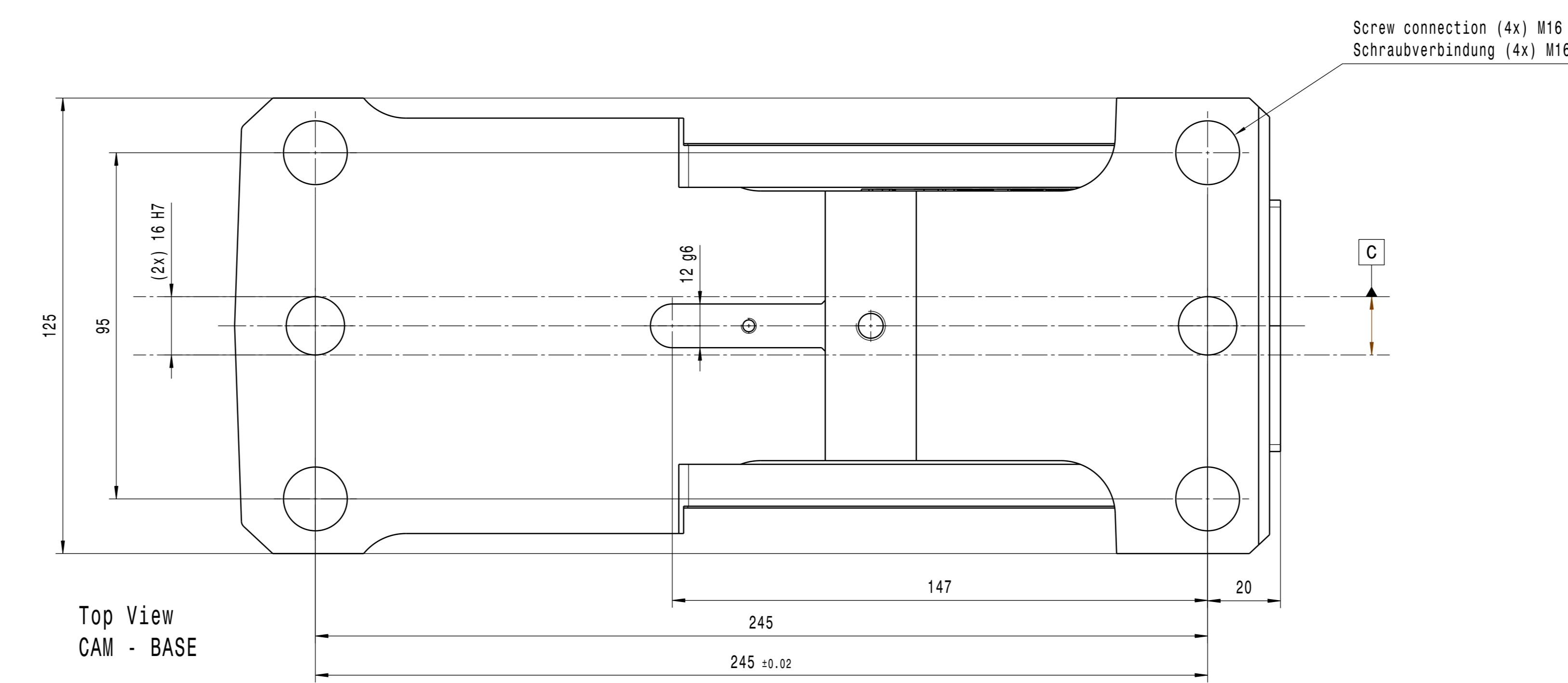
Bottom View
CAM - DRIVER



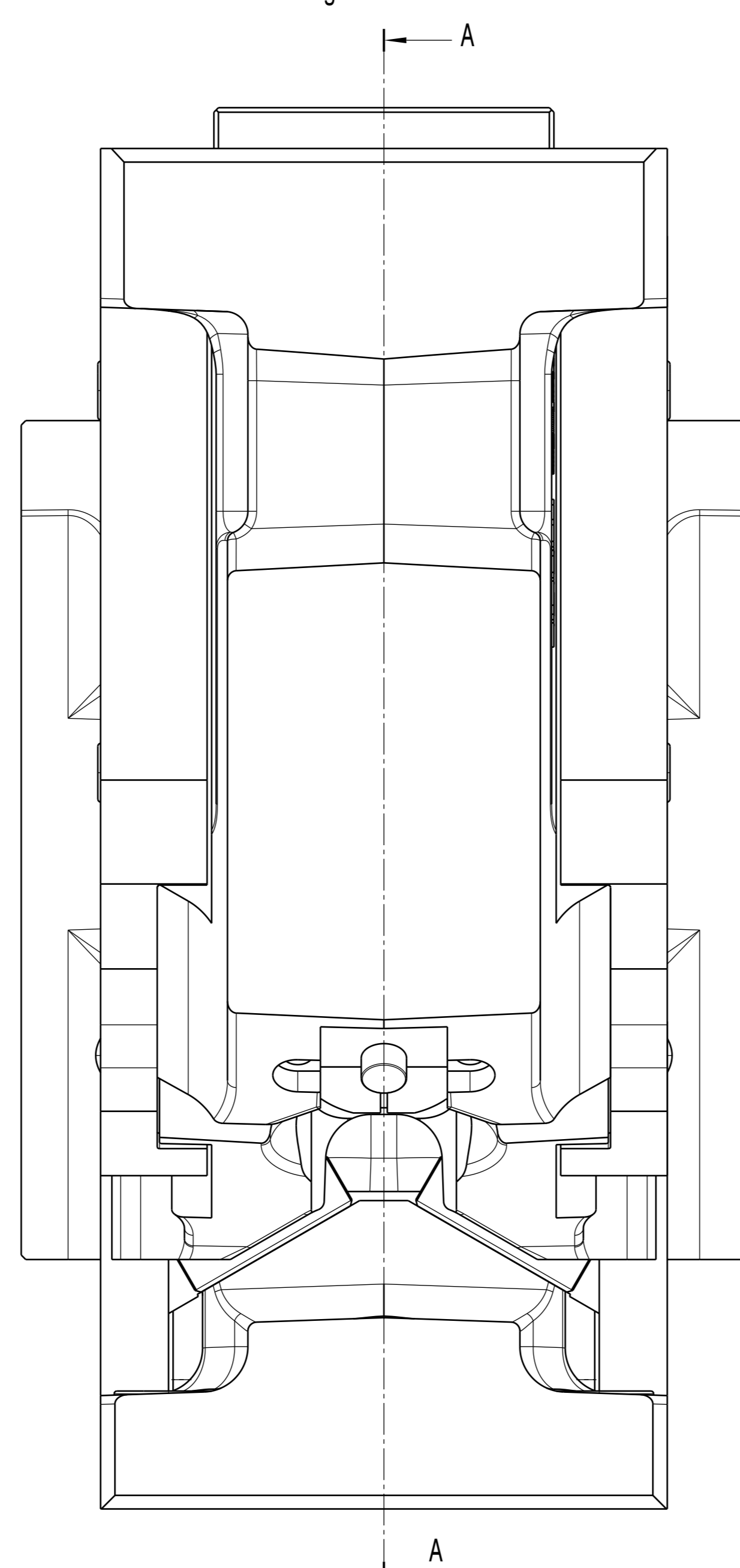
Front view



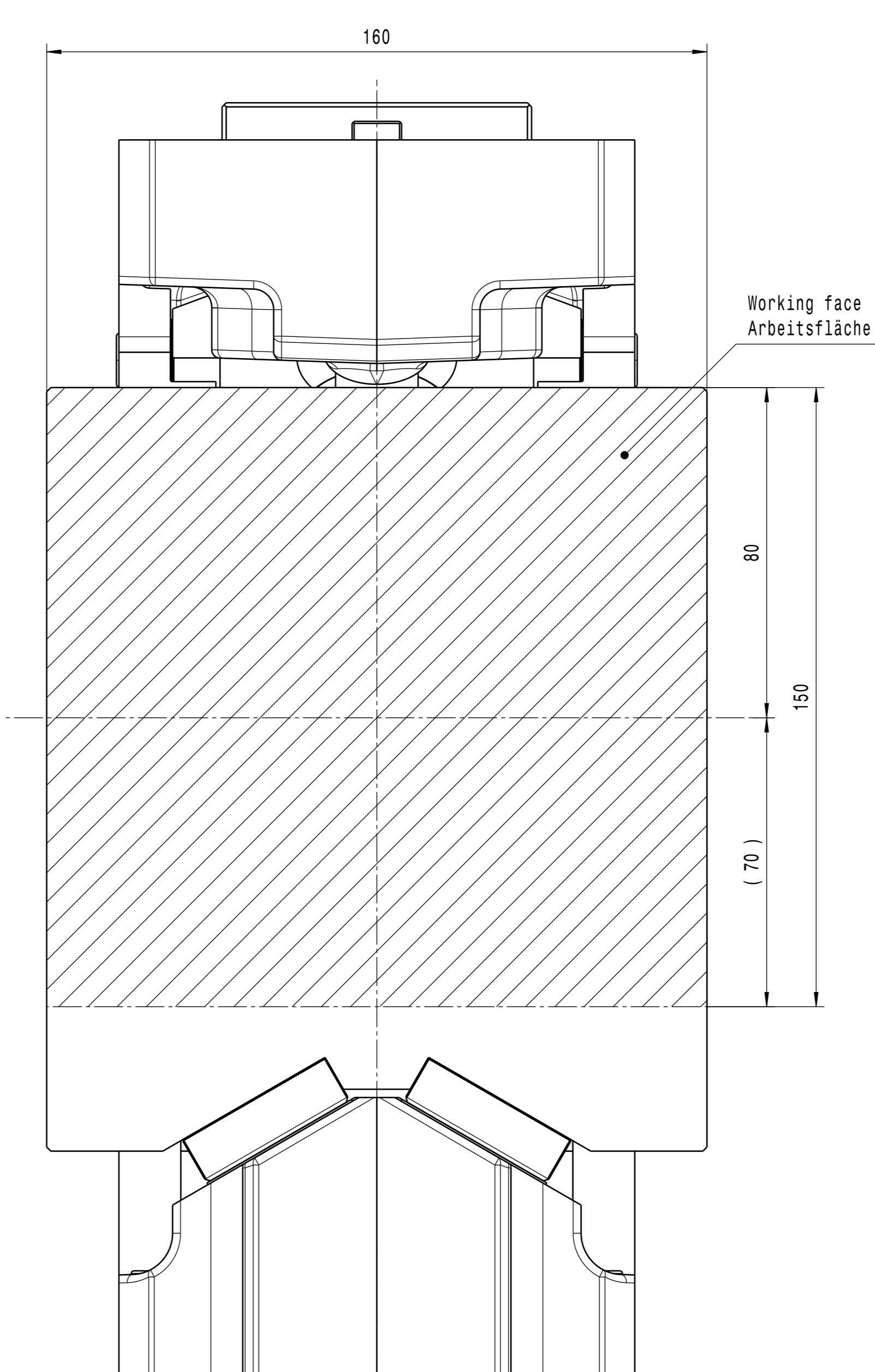
Top View
CAM - BASE



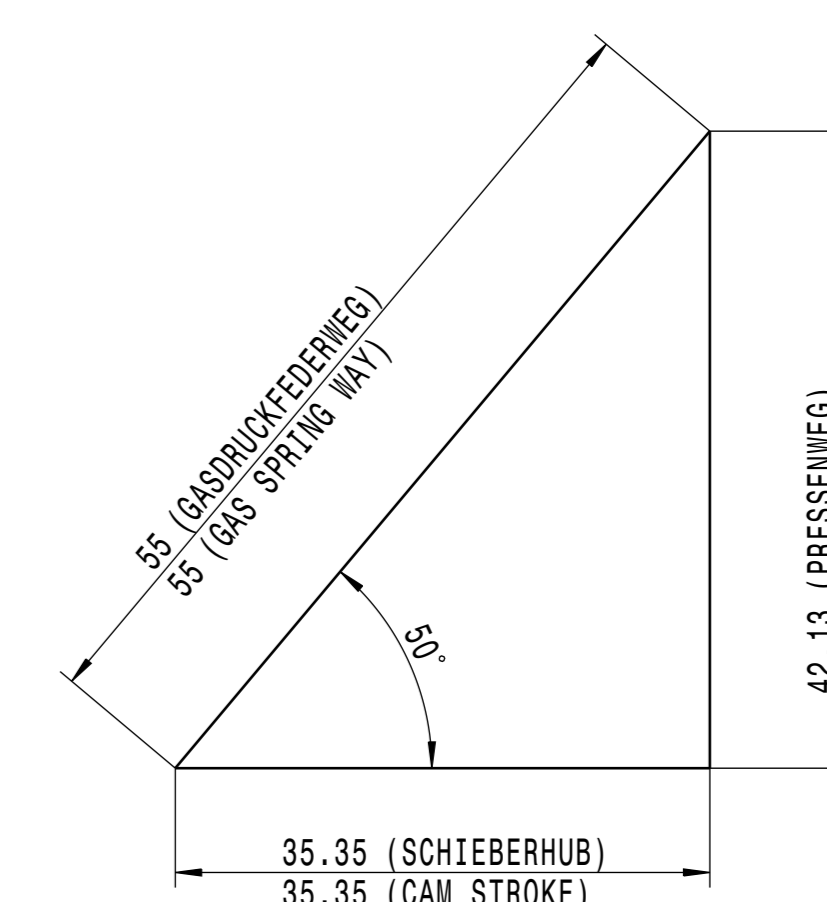
Right view



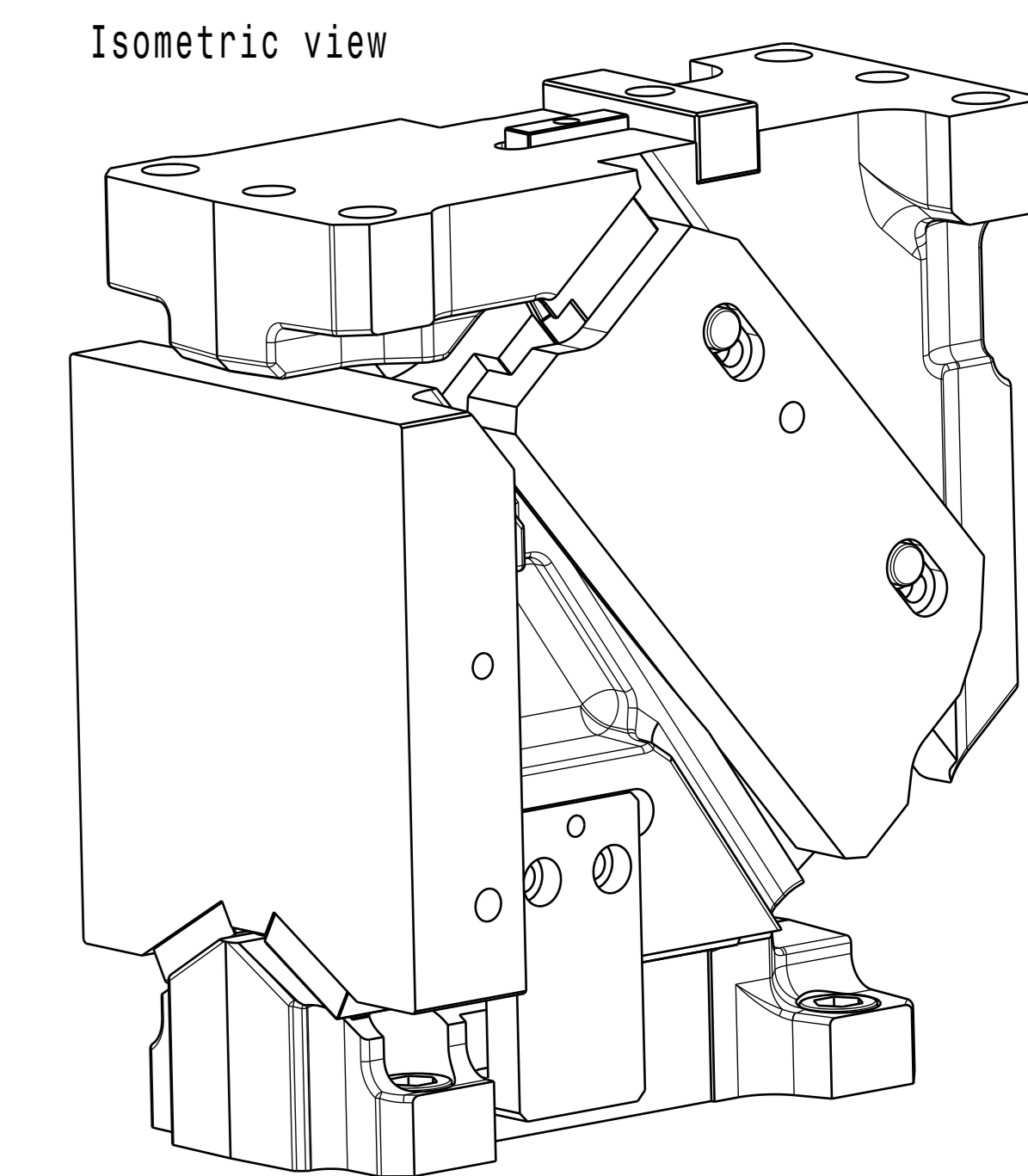
Auxiliary view B



CAM-DIAGRAM (2:1)



Isometric view



Diese Zeichnung ist geistiges Eigentum der voestalpine Camtec GmbH. Eine Weitergabe an Dritte ohne unsere Zustimmung ist nicht erlaubt. This drawing is intellectual property of voestalpine Camtec GmbH. A transfer to a third party without our agreement is not allowed.

Description	Finished Part
Bezeichnung	Fertigteil [kg]
Cam Driver	7.84
Cam Slider	24.02
Cam Base	16.98
Add-on Parts	10.85
Anbauteile	
Total Weight	59.69

Screw - Position	Id. No.	Description	DIN	Din.	Mechanical-Resistance	Quantity
Schraubenposition	Id. Nr.	Bezeichnung	DIN	Din.	Festigkeitsklasse	Stückzahl
Wear Plate - Cam Slider (B)	112527	Low Head Screw	DIN 7984	M8x16	10.9	4
Flachkopf Schraube						
Wear Plate - Cam Base (A)	112527	Low Head Screw	DIN 7984	M8x16	10.9	4
Flachkopf Schraube						
Safety Plate	112561	Cyl. Head Screw	DIN 912	M6x20	10.9	2
Zyl. Kopf Schraube						
Side Plate	112607	Low Head Screw	DIN 7984	M8x20	10.9	4
Flachkopf Schraube						
Washer	112540	Washer	DIN 125A	M8	-	4
Scheibe						
Pin Puller	108799	Dowel Pin	DIN 7970	Ø10x16	M6	2
Zylinderstift						
Pin Puller	112560	Flange - Oval Head Screw	ISO7380-2	M6x12	10.9	1
Stiftzieher						
Washer - Rosette 90°	112569	Washer - Rosette 90°		M10	-	1
Scheibe - Rosette 90°						
Positive Return	112527	Low Head Screw	DIN 7984	M8x16	10.9	4
Zwangsrückzug						
Lockout	112562	Cyl. Head Screw	DIN 912	M8x80	10.9	1
Zyl. Kopf Schraube						
Stop Block	112563	Cyl. Head Screw	DIN 912	M8x40	10.9	2
Anschlag						
Stop Plate	112561	Cyl. Head Screw	DIN 912	M6x20	10.9	2
Halteplatte						
Fitting Key	112508	Cyl. Head Screw	DIN 912	M8x22	10.9	1
Passfeder						
Driver - Lock Screw	112530	Cyl. Head Screw	DIN 912	M4x16	10.9	1
Treiber - Lock Schrauben						
Driver - Lock Screw	112564	Cyl. Head Screw	DIN 912	M12x65	10.9	1
Treiber - Lock Schrauben						

Item No.		Quantity	Part Description	Basis ID	Material	Index
Stücklistennr.	Stückzahl	Teilbezeichnung		Werkstoff		
1	1	401223 Cam Driver 125-00_00	401207	EN-GJS 700-2	0	
2	1	401257 Cam Slider 160-50_00	401251	EN-GJS 700-2	0	
3	2	23352 Positive Return_00	-	1.7225	0	
4	1	111938 Gas Spring_00	-	-	-	
5	2	18478 Wear Plate 12x40x160_00	-	WF 750/1A	0	
6	1	23367 Lock Plate_00	-	1.7225	0	
7	1	23368 Stop Block_00	-	1.7225	0	
8	1	23372 Safety Plate_00	-	1.7225	0	
9	1	110554 Damping Element_00	-	-	-	
10	1	22078 Lockout_00	-	1.0038	0	
11	1	401263 Cam Base 125-50_00	-	EN-GJS 700-2	0	
12	1	23929 Side Plate 80x125-160_00	-	1.7225 - Sinter	0	
13	1	23935 Side Plate 80x125-160_00	-	1.7225 - Sinter	0	
14	1	23925 Fitting Key_00	-	1.0503	0	
15	2	18487 Wear Plate 12x35x200_00	-	WF 750/1A	0	
16	1	23942 Stop Plate_00	-	1.7225	0	
17	1	23243 Fitting Key_00	-	1.0503	0	

Specifications / Technische Daten:	
Cam Stroke / Schieberhub:	35.35mm
Working Face / Arbeitsfläche:	160 x 150mm
Sliding surfaces hardened / Gleitflächen gehärtet	

voestalpine Camtec GmbH		Aerial Cam / Oberteilschieber	
Modification description:	Date/Date	Description/Bezeichnung:	Ident.No.:
Änderung:	2019-03-27	QT-160-0°	
checked	2019-03-27	Customer-Drawing	Premium: 27120
geprüft		Kundenzzeichnung	Basis: 27620
ISO 2768	Scale/ Maßstab:	Drawing Number / Zeichnungsname:	Index:
mK	1:1	27120_ZSB_0-KS_160-00_00	00