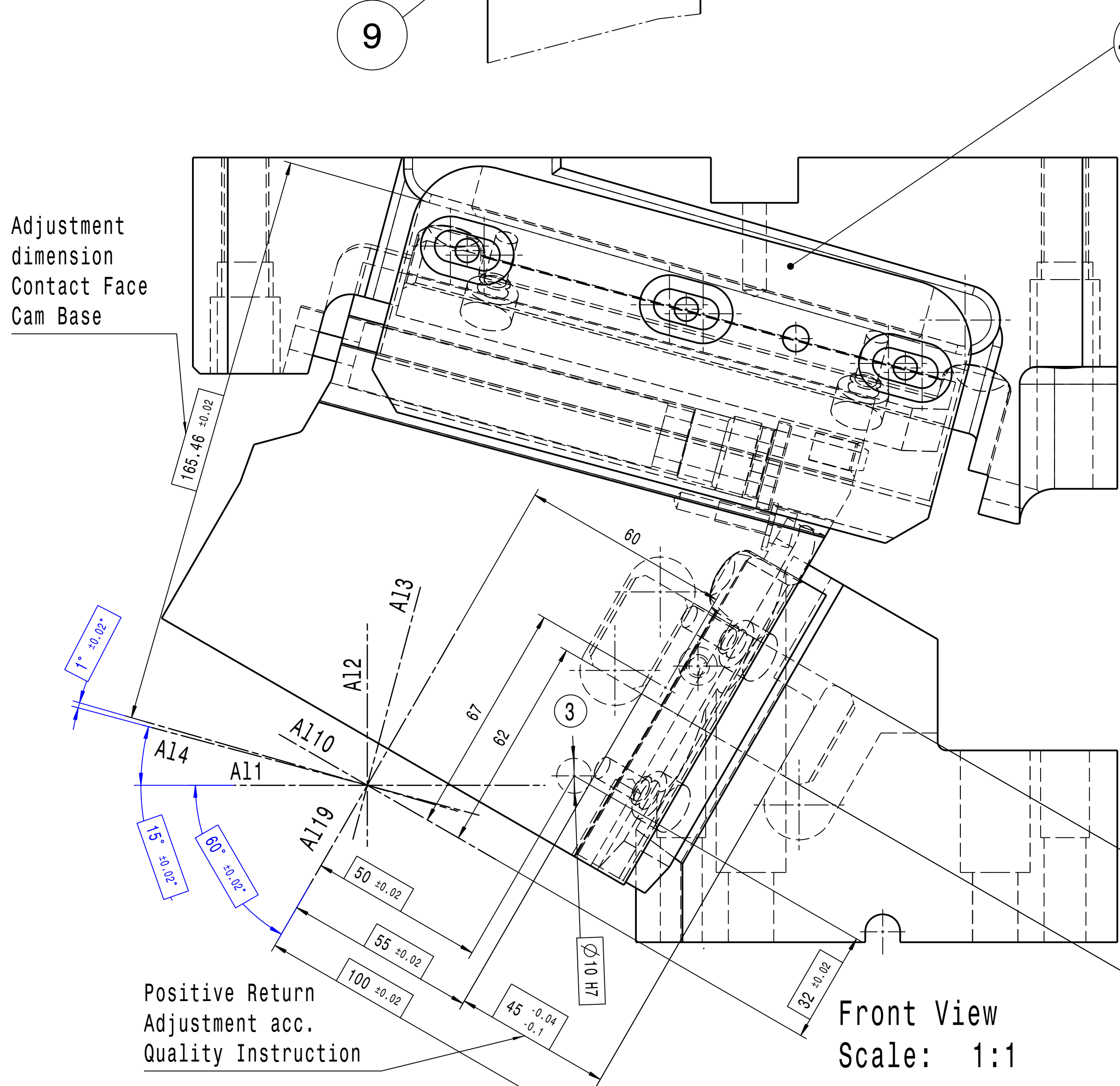
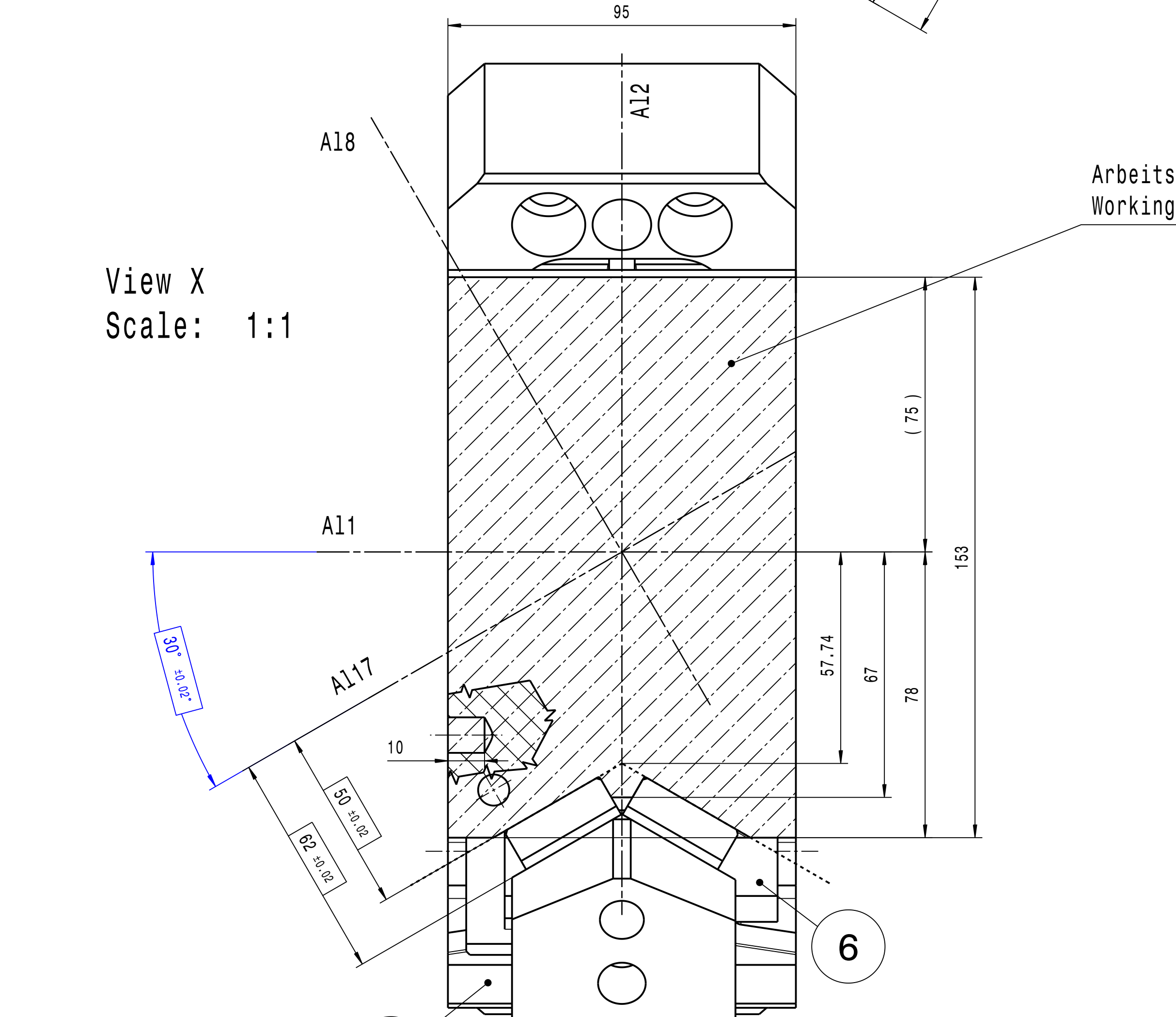
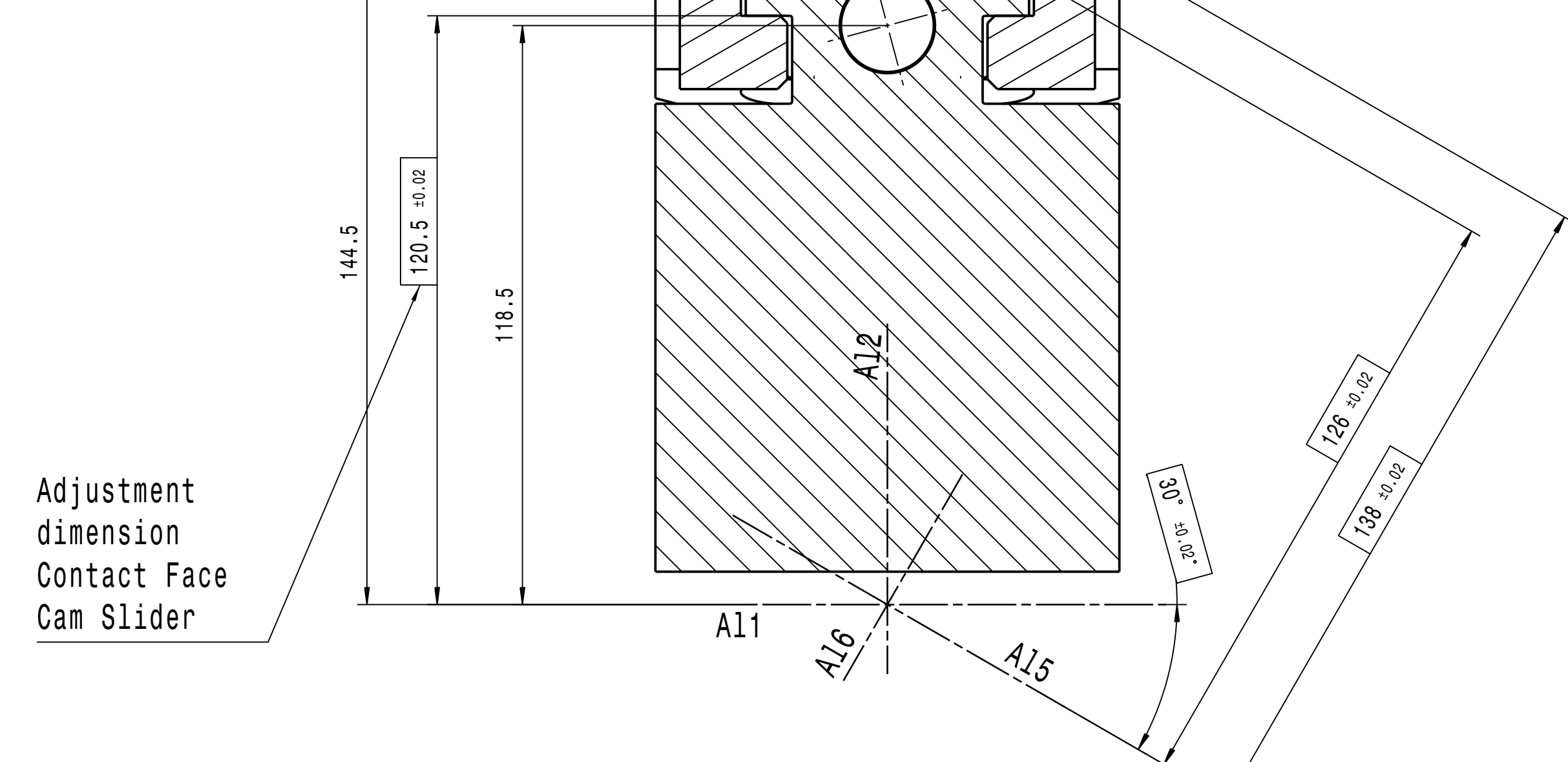
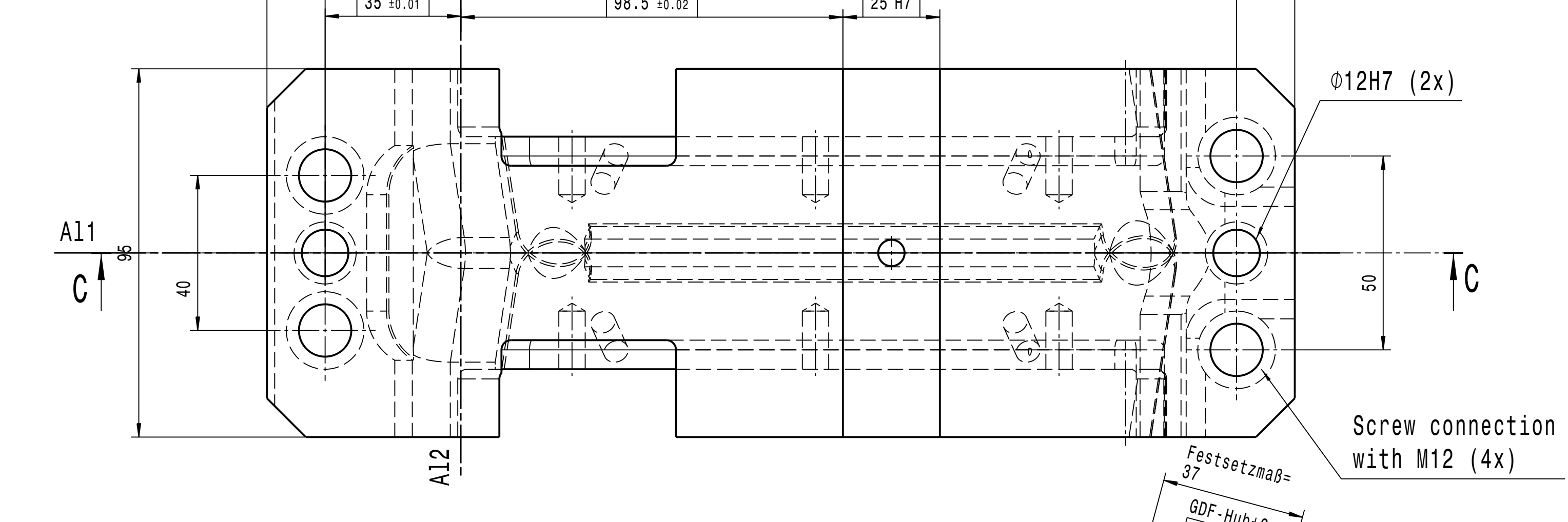


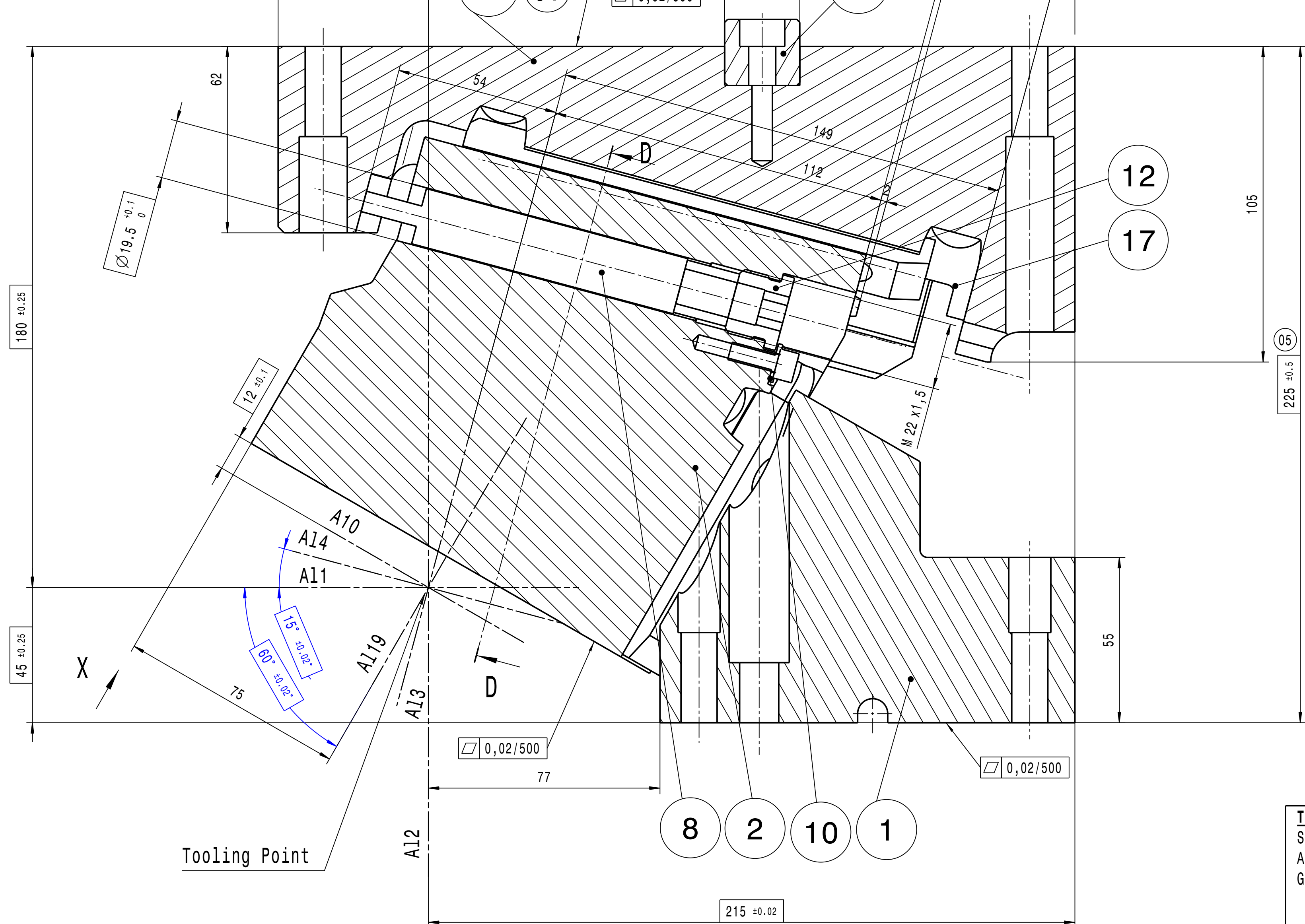
Section D-D
Scale: 1:1



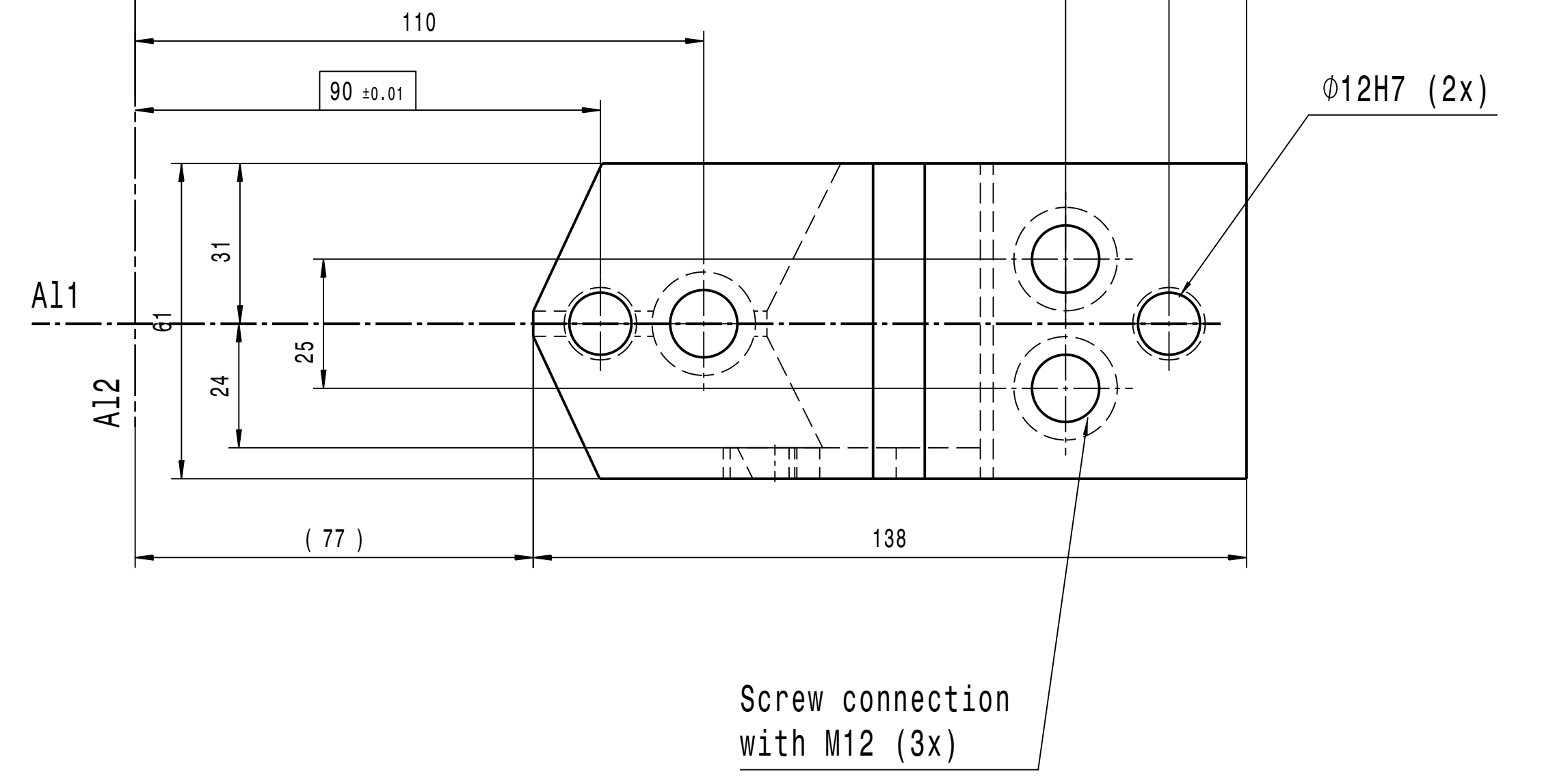
PLAN VIEW
CAM BASE



Section C-C
Scale: 1:1



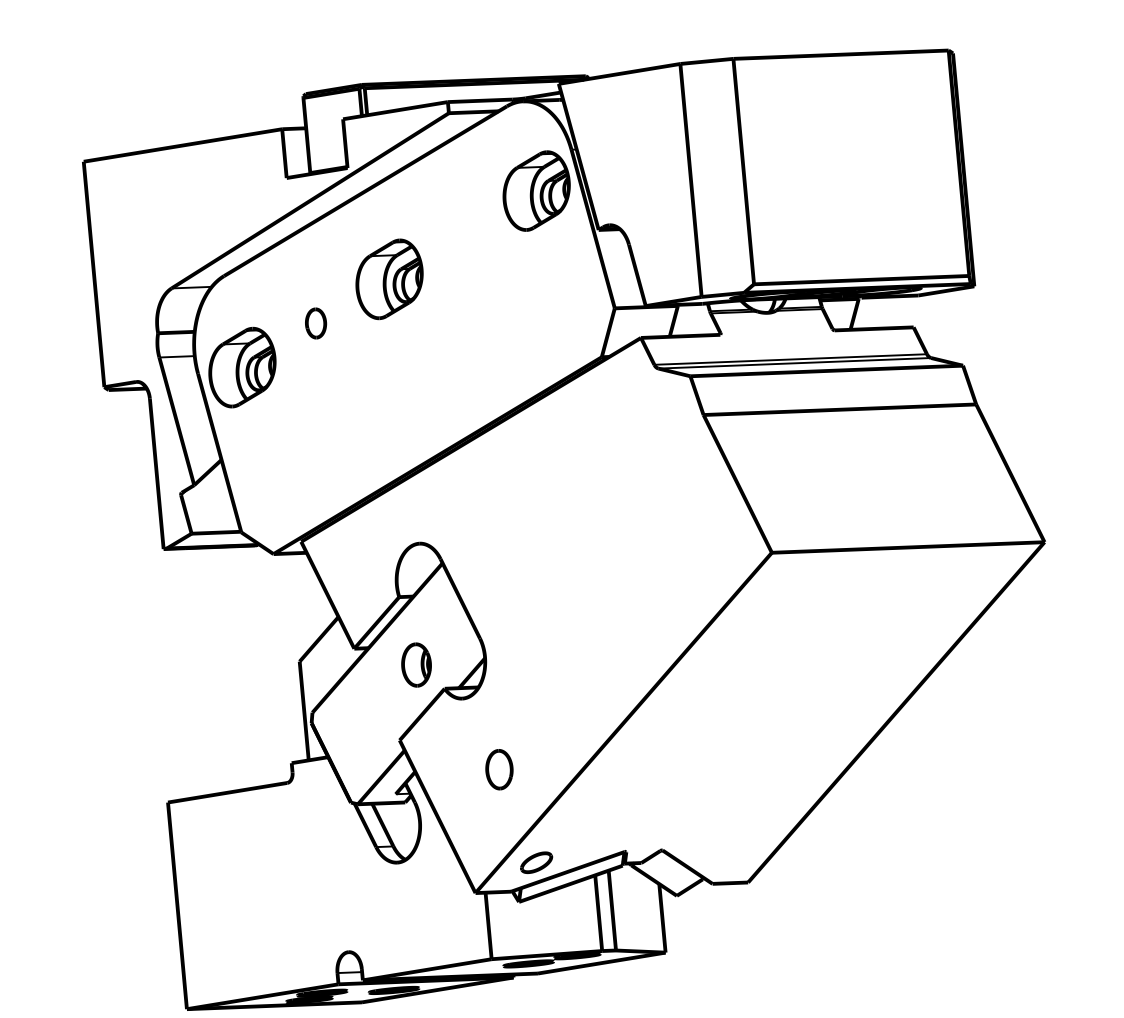
Plan View
CAM DRIVER



Fastening Screw Thread	Dimension
Fitting Key	1x M 8 x 20
Wear Plates Cam Base	4x M 8 x 12
Wear Plates Cam Slider	4x M 8 x 12
Side Plates	6x M 8 x 12
Positiv Return	1x M 6 x 12

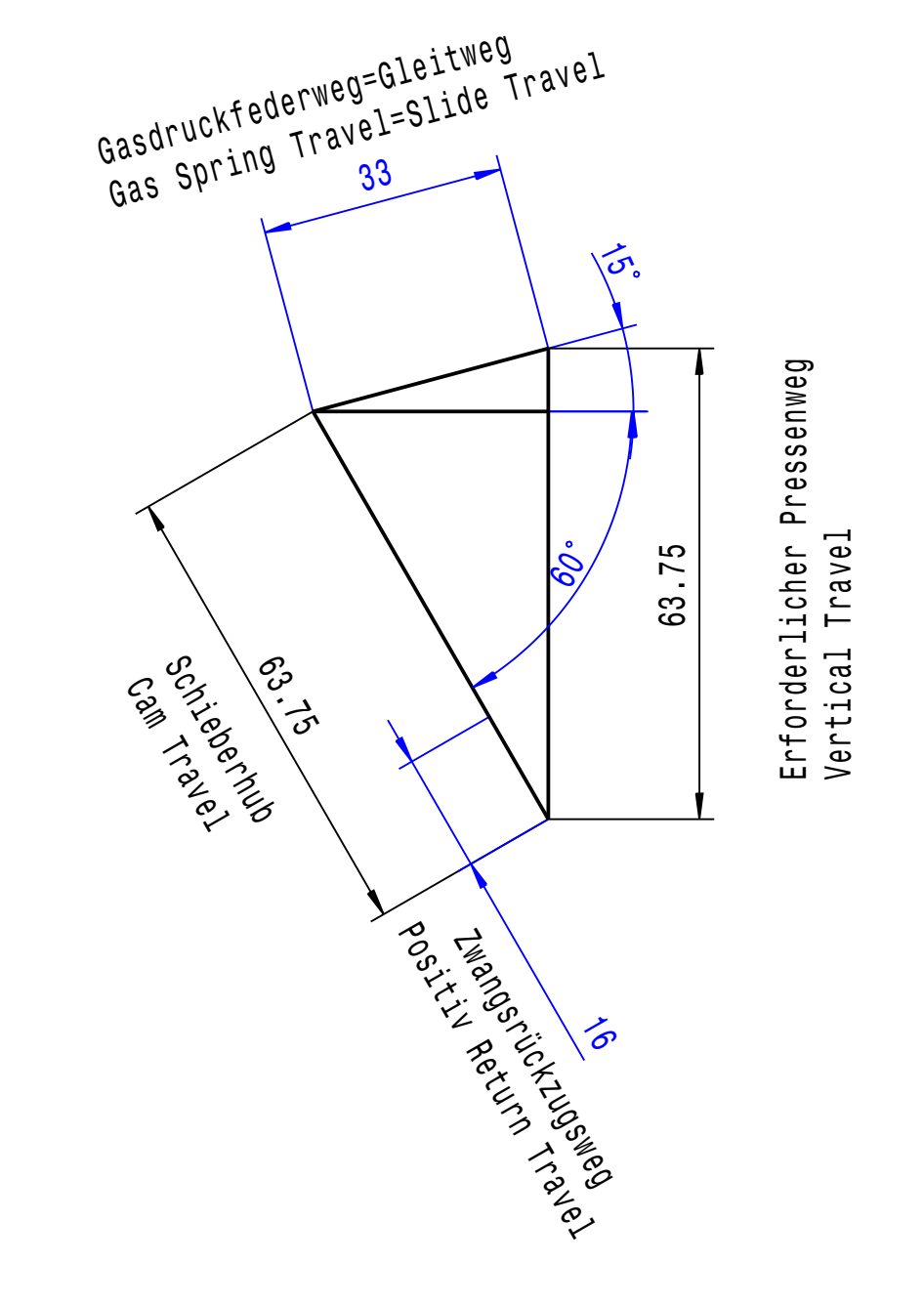
Diese Zeichnung ist geistiges Eigentum der voestalpine Giesserei Linz GmbH. Eine Weitergabe an Dritte ohne unsere Zustimmung ist nicht erlaubt. This drawing is intellectual property of voestalpine Giesserei Linz GmbH. A transfer to a third party without our agreement is not allowed.

Screw tolerance: ±0,2
Locating pin tolerance: ±0,01



Isometric View
Scale: 1:2

SCHIEBERDIAGRAMM
CAM DIAGRAMM
Maßstab 1:1



roh Rz 100 Rz 25 Rz 6,3

Pattern number Cam Driver: 103423 IND.B
Pattern number Cam Slider: 107475 IND.B
Pattern number Cam Base: 103425 IND.C

Technische Daten / Specification:
Schieberweg / Travel of Cam: 63.75mm
Arbeitsfläche / Working Face: 153x95mm
Gasfederrückzugskraft / Stripper Force min.: 750N

Component Parts: 29052					
Pos.-No.	Anzahl	Bezeichnung	Material	Hersteller	Id.-Nr.
1	1	Cam Driver	min. 400 MPa (Casting 107956 IND.B)	voestalpine	108171
2	1	Cam Slider	min. 400 MPa (Casting 108036 IND.B)	voestalpine	108172
3	1	Cam Base	min. 400 MPa (Casting 107950 IND.C)	voestalpine	108173
4	1	Side Plate (L)	WF 750/1A (75x165x22)	voestalpine	23136
5	1	Side Plate (R)	WF 750/1A (75x165x22)	voestalpine	23137
6	2	Wear Plate (B)	WF 750/1A (30x12x100)	voestalpine	18211
7	2	Wear Plate (A)	WF 750/1A (25x12x160)	voestalpine	18209
8	1	Gas Spring Ejector	Ø19 / L=142 / Stroke=50 / F=min.750N	voestalpine	101543
9	1	Positiv Return (L)	min. 400 MPa(30x74x16.5)	voestalpine	108370
10	1	Lock Washer	DIN 125 (Ø6.4)	voestalpine	105553
11	2	Damping Element	90 Shore A - DIN Ø835 PUR(Ø8x16)	voestalpine	102875
12	1	Lock Screw	1.7225 M22x1,5 (Ø25x36)	voestalpine	108890
13	1	Fitting Key	1.0503.07 (22x25x80)	voestalpine	23390
14
15
16
17
18
19
20
21
22

voestalpine Giesserei Linz GmbH		Date	Name	Description	Ident-No.
08					
07					
06					
05	05	2018-01-22	LACK	Norm	
04	04	2012-10-04	SCHWER		
03	03	2011-05-16	RIESS		
02	02	2010-03-24	SCHWER		
01	01	2010-03-02	SCHWER		

Position: Amount: Material: Sheet-No.:
Description: 29052

Elementary Cam
ES-OT 095-60°
63.75 Stroke

ISO 2768 Scale: 1:1 Drawing-Number: Assembly Index-No. 05

Date/name: ES_OT_0095_60_IND_05_29052_HUB_63.8_2018_01_22_LACK