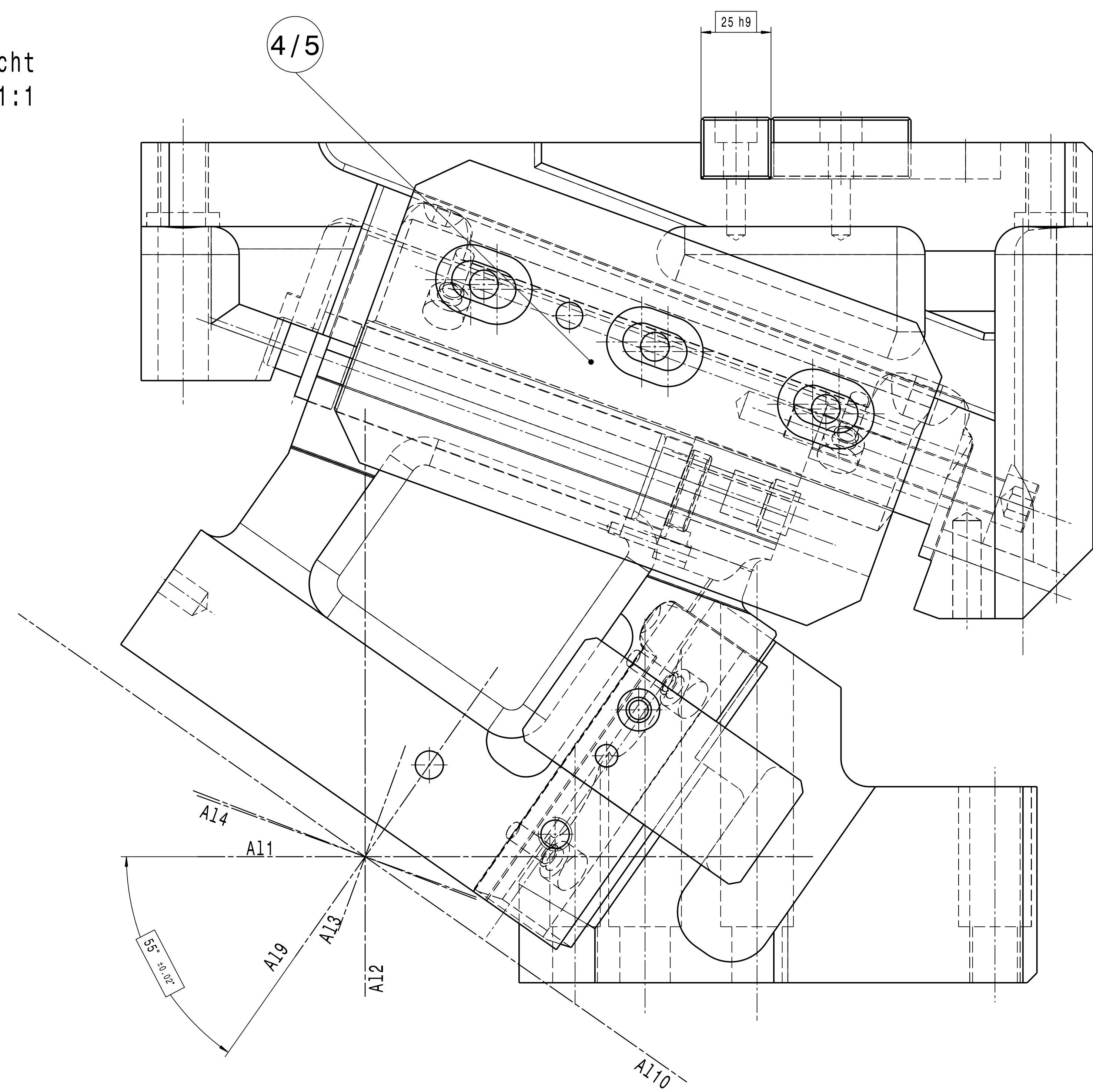
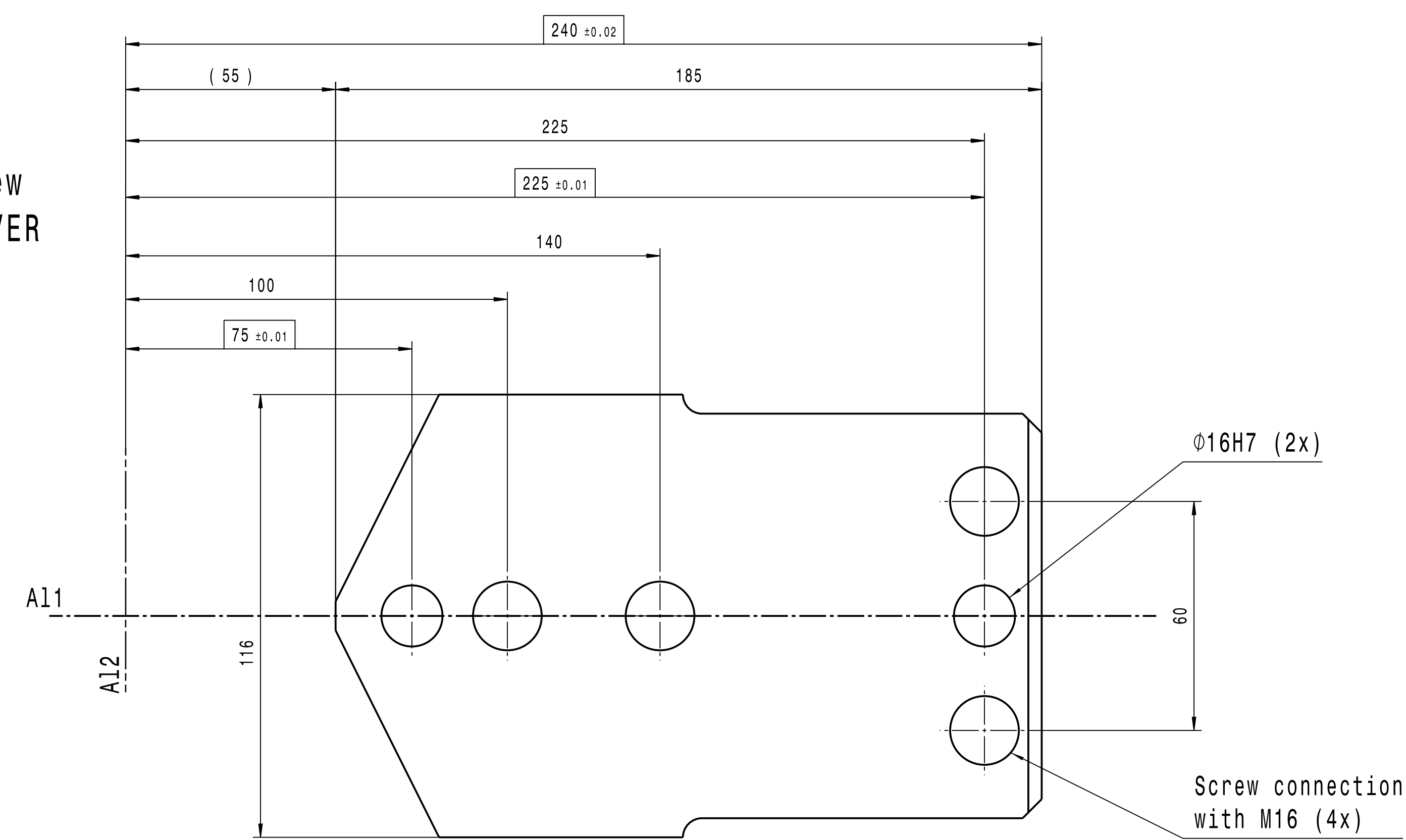


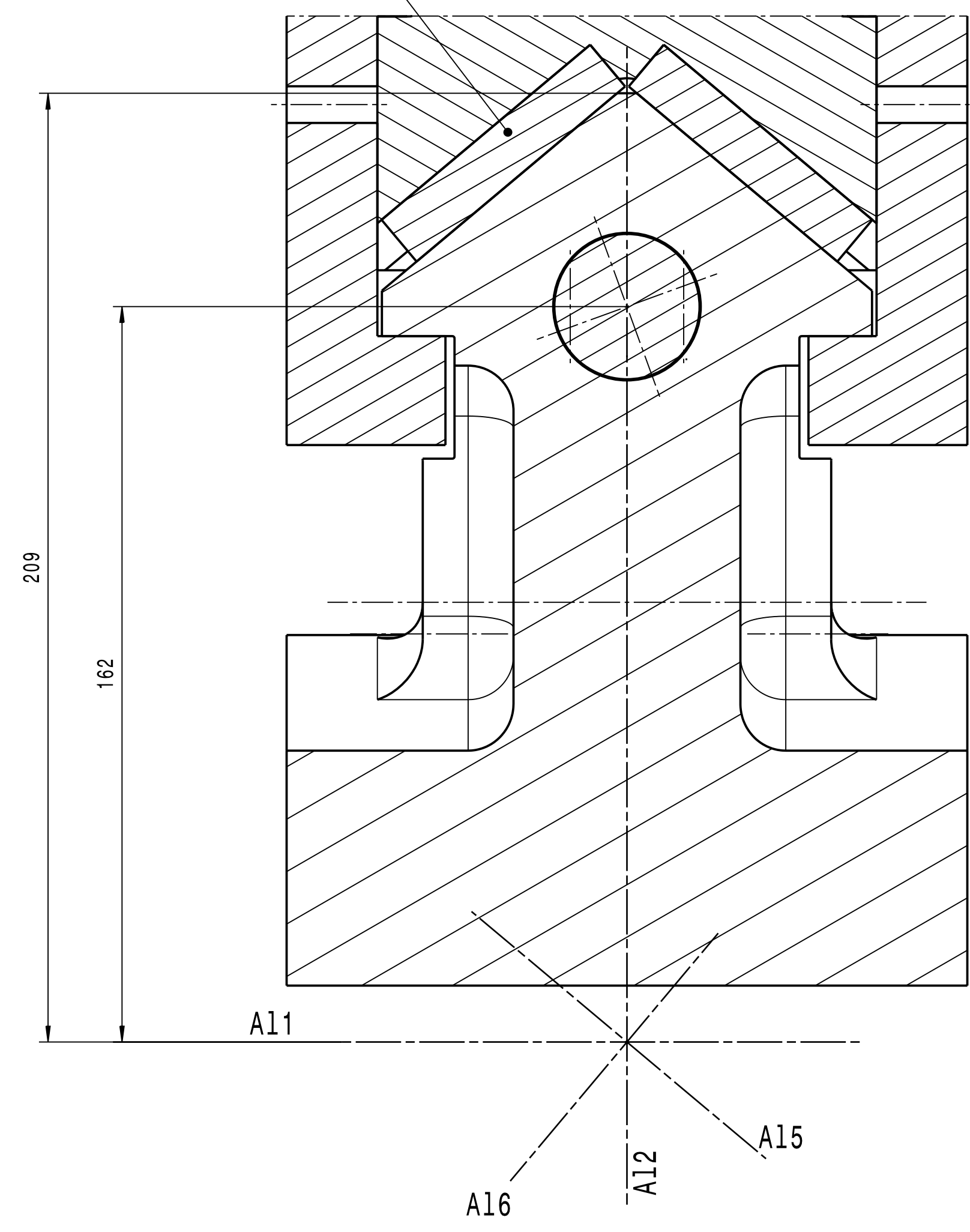
Vorderansicht
Maßstab: 1:1



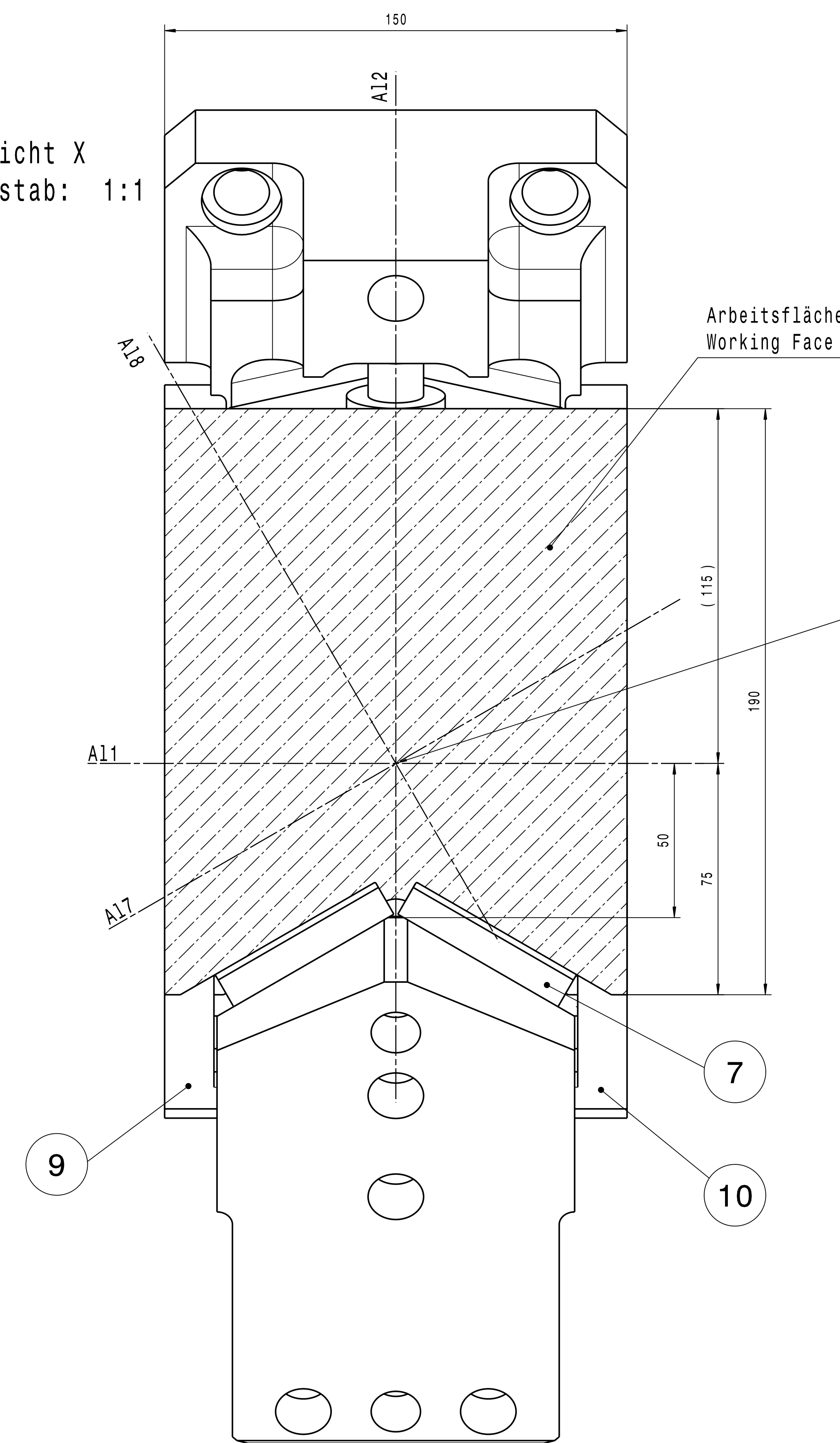
Plan View
CAM DRIVER



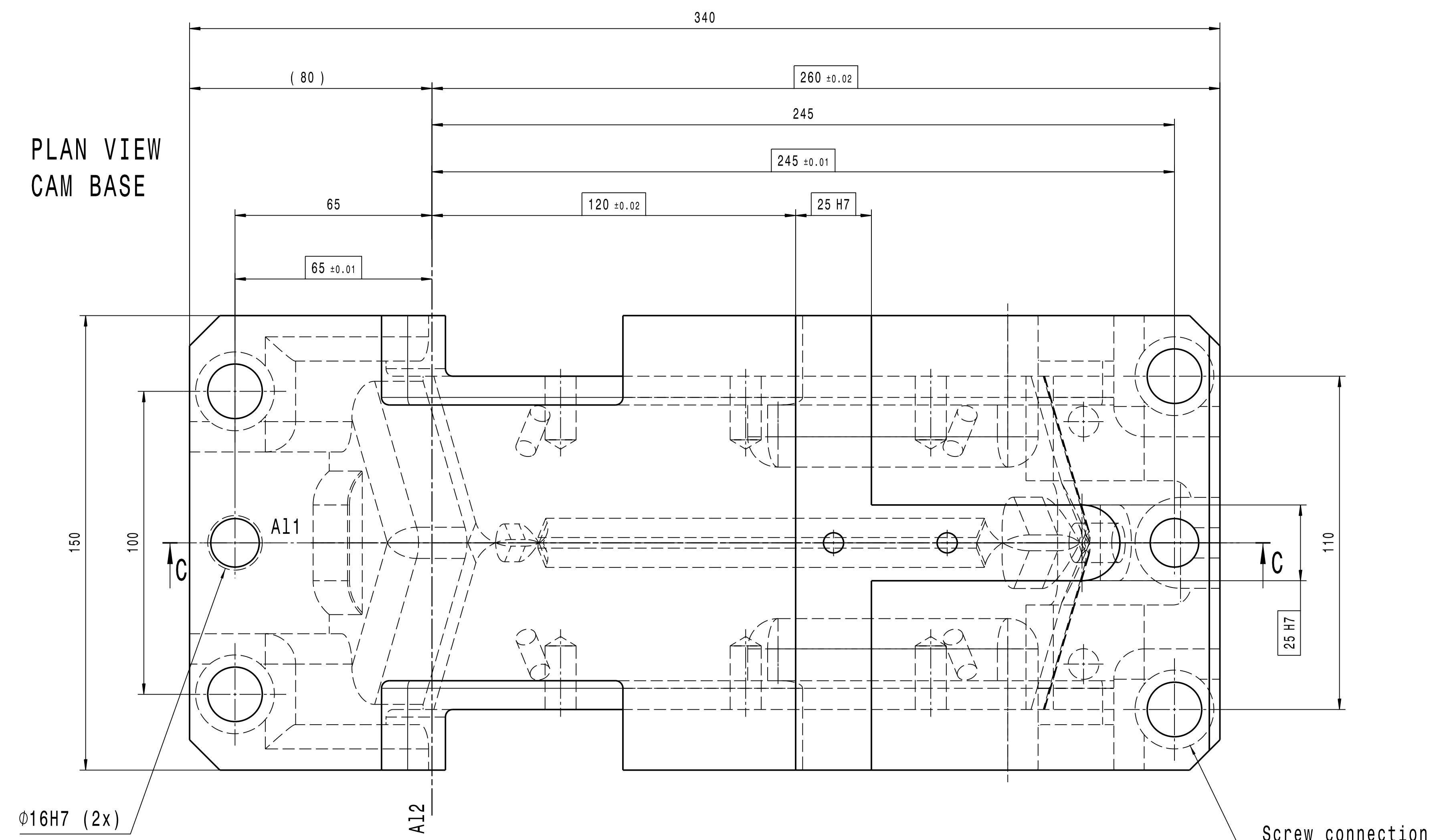
Schnitt D-D
Maßstab: 1:1



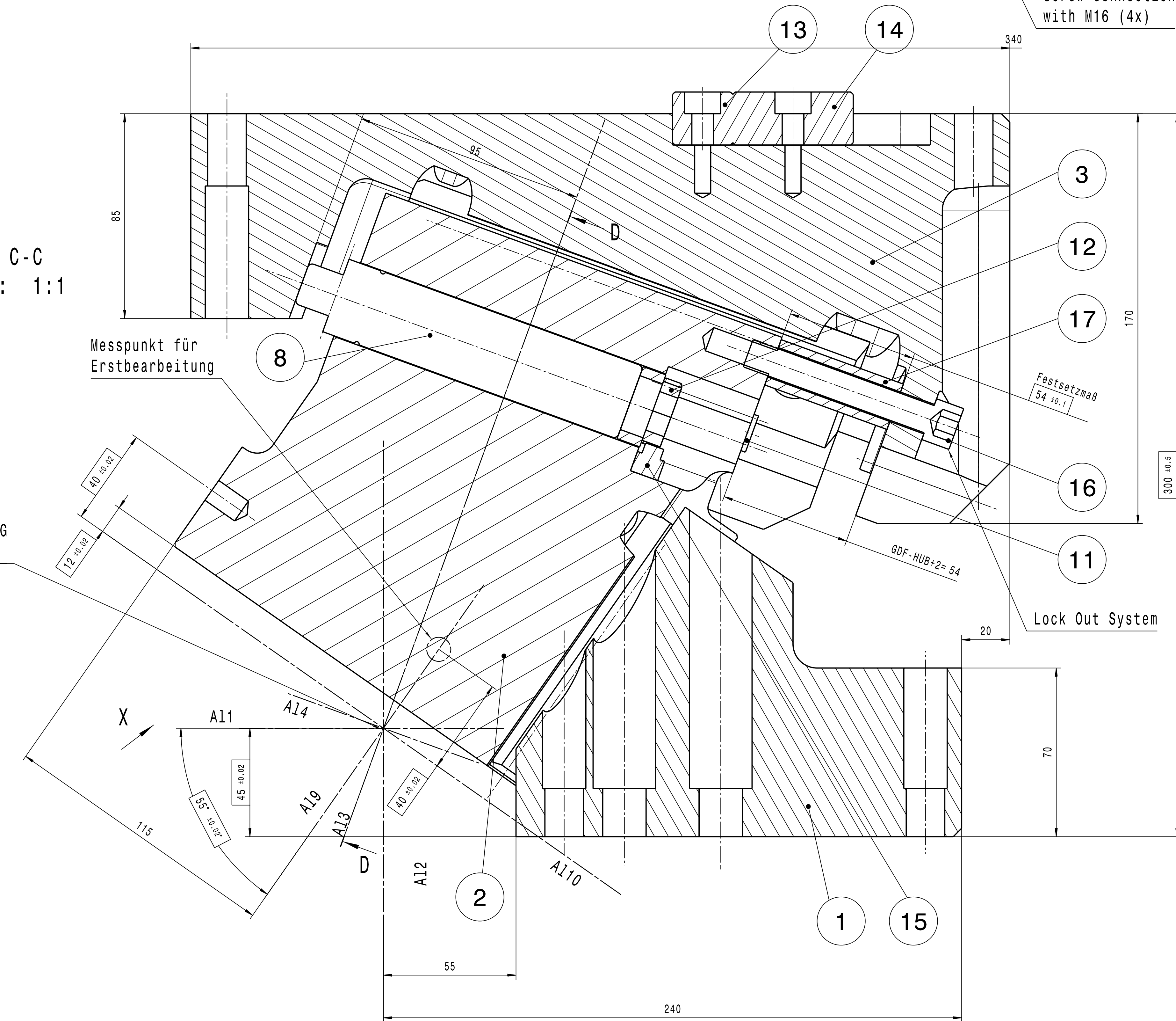
Ansicht X
Maßstab: 1:1



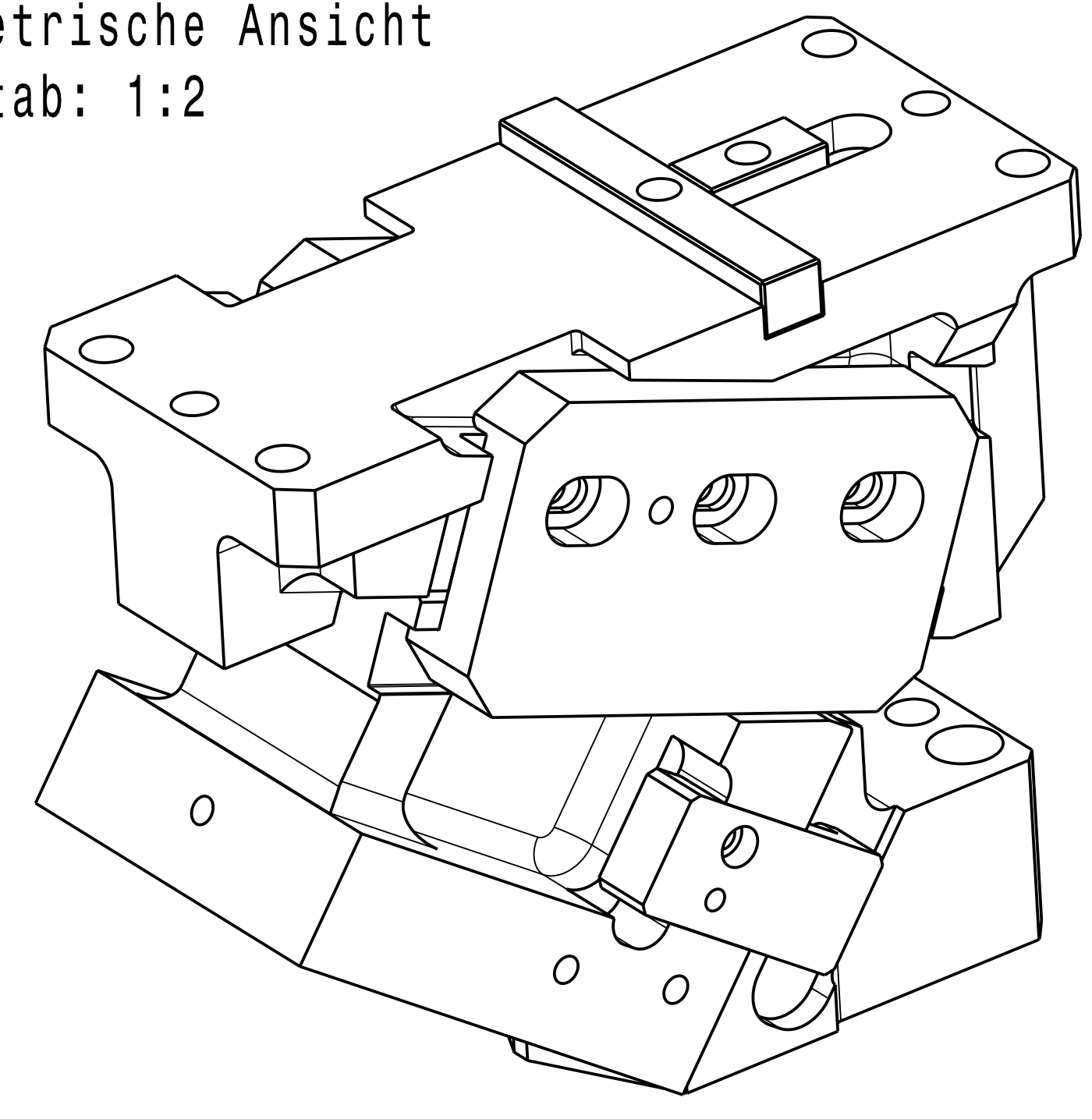
PLAN VIEW
CAM BASE



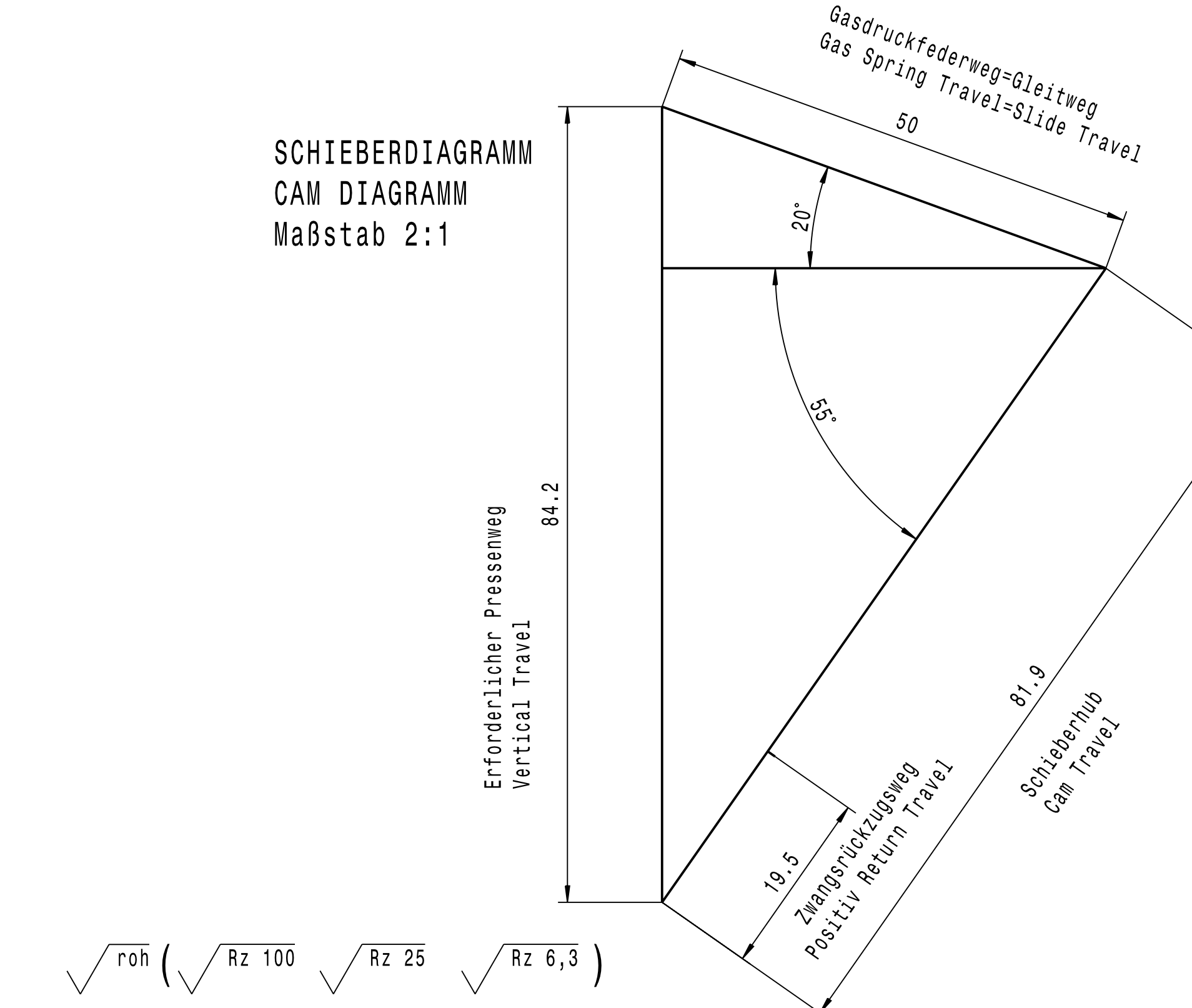
Schnitt C-C
Maßstab: 1:1



Isometrische Ansicht
Maßstab: 1:2



SCHIEBERDIAGRAMM
CAM DIAGRAMM
Maßstab 2:1



Fastening Screw Thread	Dimension	Diese Zeichnung ist geistiges Eigentum der voestalpine Giesserei Linz GmbH. Eine Weitergabe an Dritte ohne unsere Zustimmung ist nicht erlaubt. This drawing is intellectual property of voestalpine Giesserei Linz GmbH. A transfer to a third party without our agreement is not allowed.
Fitting Key	2 x M 8 x 15	
Wear Plate - Cam Base	4 x M 8 x 15	
Wear Plate - Cam Slider	4 x M 8 x 15	
Slide Plate	6 x M2 x 18	
Positiv Return	2 x M 8 x 15	

Technische Daten / Specification:
 Schieberweg / Travel of Cam: 81,9mm
 Arbeitsfläche / Working Face: 190x150mm
 Gasfederrückzugskraft / Stripper Force min.: 265daN
 oder
 Gasfederrückzugskraft / Stripper Force min.: 500daN

Pos.-No.	Anzahl	Bezeichnung	Material	Hersteller	Id.-Nr.
1	1	Cam driver	0.7070	voestalpine	103216
2	1	Cam Slider	0.7070	voestalpine	103217
3	1	Cam Base	0.7070	voestalpine	103218
4	1	Side Plate (L)	WF 750/1A (115x200x35)	voestalpine	23267
5	1	Side Plate (R)	WF 750/1A (115x200x35)	voestalpine	23268
6	2	Wear Plate (A)	WF 750/1A (60x12x200)	voestalpine	18234
7	2	Wear Plate (B)	WF 750/1A (60x12x160)	voestalpine	18232
8	1	Gas Spring Ejector	C.250.080.SW.150 032 Hub 80 / eff 50	DADCO	101570
9	1	Positiv Return(R)	1.7225 (45x95x25)	voestalpine	105477
10	1	Positiv Return(L)	1.7225 (45x95x25)	voestalpine	103224
11	2	Damping Element	PUR(016x25)	voestalpine	101512
12	1	Lock Plate	1.7225 (40x8)	voestalpine	105478
13	1	Fitting Key (A)	1.0503.07 (22x25x150)	voestalpine	23389
14	1	Fitting Key (B)	1.0503.07 (22x25x50)	voestalpine	23387
15	1	Safety Plate	1.7225 (13x26x12)	voestalpine	105738
16	1	Lock Out Screw	DIN 912 M12x80	voestalpine	23789
17	1	Lock Out Tube	1.7225 (40x3,5x54)	voestalpine	23792
18	-	-	-	-	-
19	-	-	-	-	-
20	-	-	-	-	-
21	-	-	-	-	-
22	-	-	-	-	-

Pos.	Modifikation	Date	Name	Gezeichnet	Geprüft	Freigegeben	Skizze	Scale	Drawing-Number	Index-No.
08										
07										
06										
05	(13)	2018-05-22	SCHNER	Korn						
04	(12)	2014-12-04	SCHNER							
03	(11)	2014-01-21	ESSIAN							
02	(10)	2012-01-24	RIESER							
01	(9)	2009-02-27	Riesner							