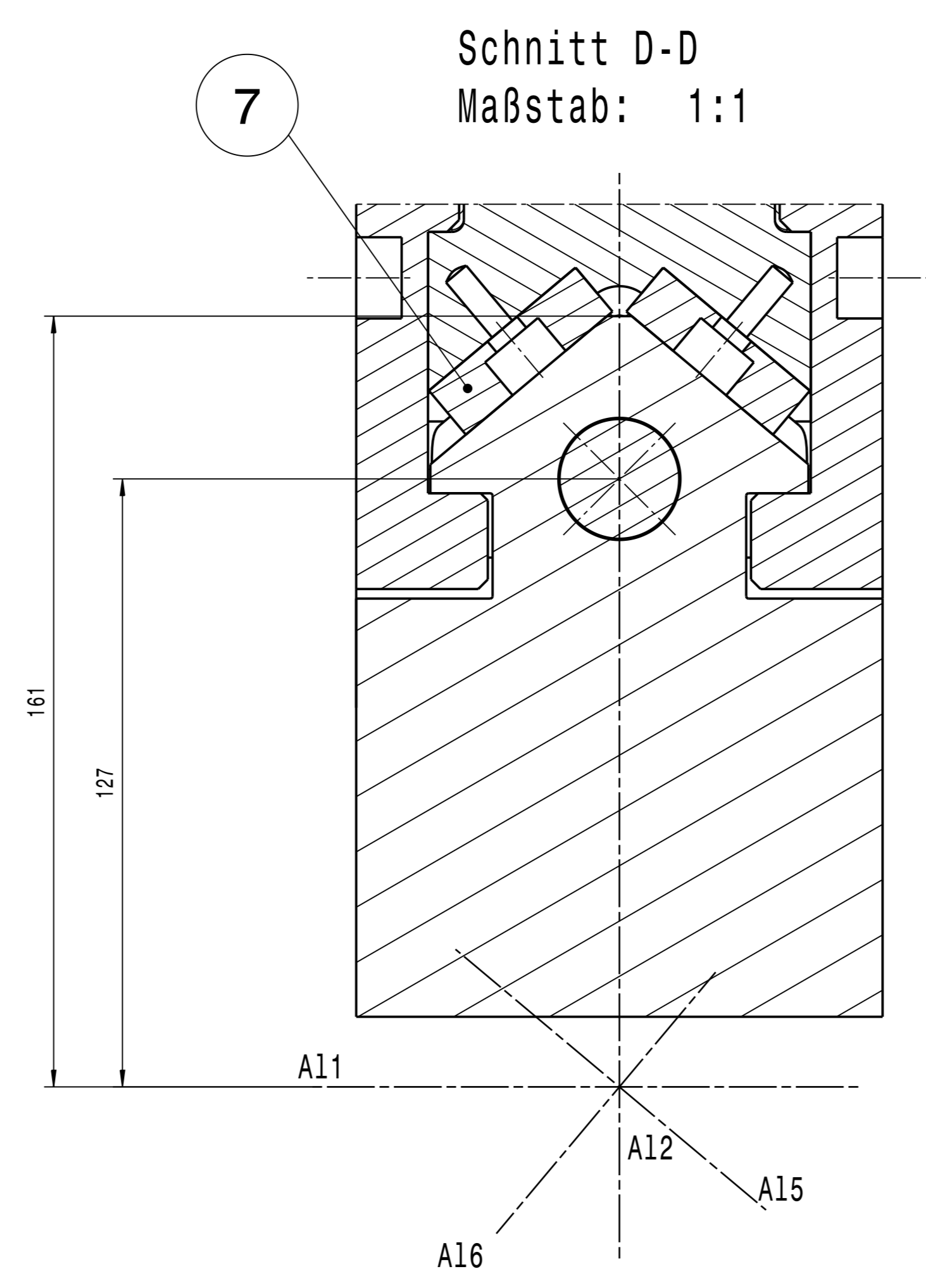
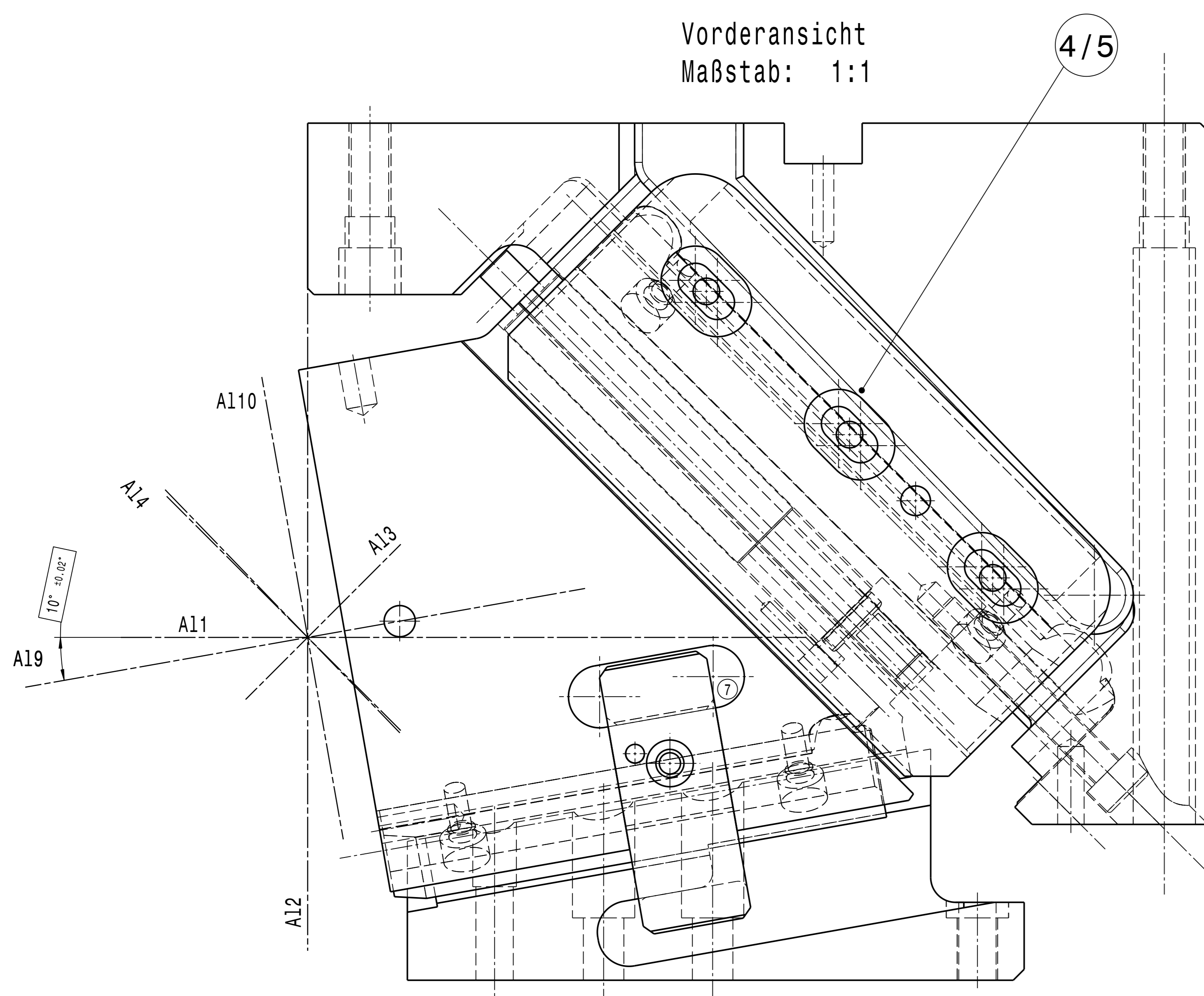
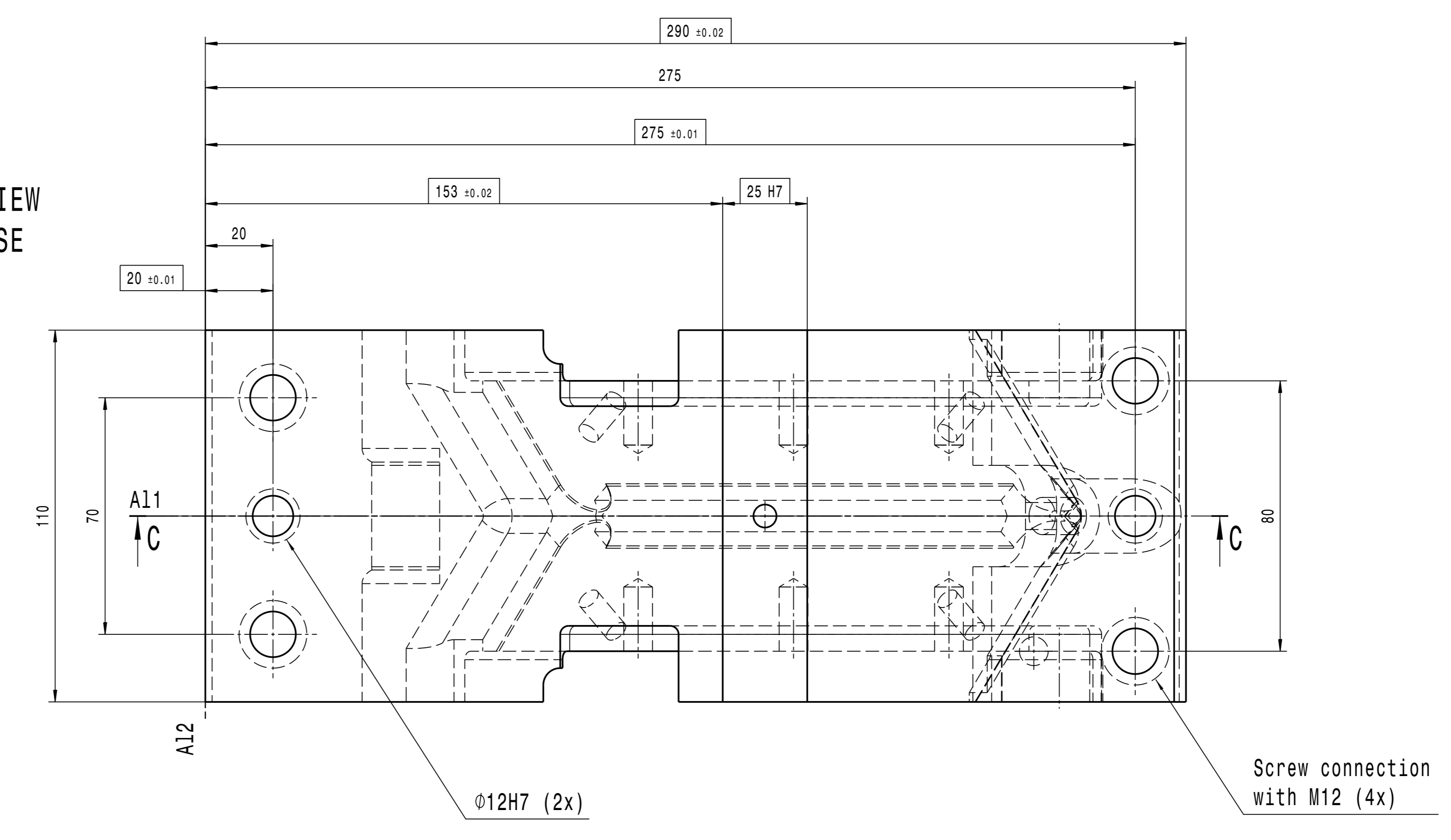


Fasting Screw Thread	Dimension	Diese Zeichnung ist geistiges Eigentum der voestalpine Gießerei Linz GmbH. Eine Weitergabe an Dritte ohne unsere Zustimmung ist nicht erlaubt. This drawing is intellectual property of voestalpine Gießerei Linz GmbH. A transfer to a third party without our agreement is not allowed.
Fitting Key	1 x M 8 x 20	
Slide Plate	6 x M10 x 16	
Wear Plate - Cam Base	4 x M 8 x 12	
Wear Plate - Cam Slider	4 x M 8 x 12	
Positiv Return	2 x M 8 x 12	

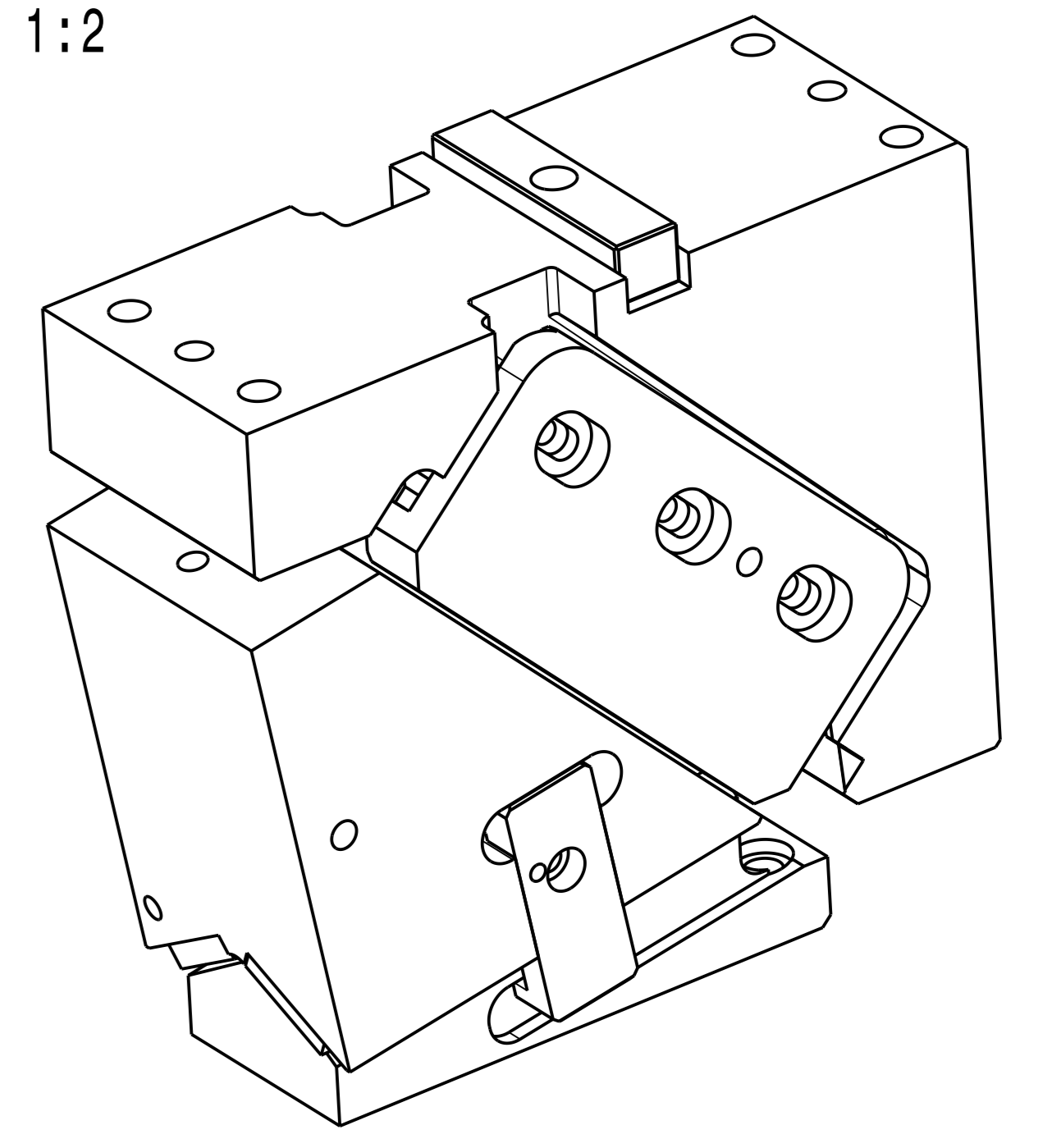
Screw tolerance: +0,2  
Locating pin tolerance: +0,01



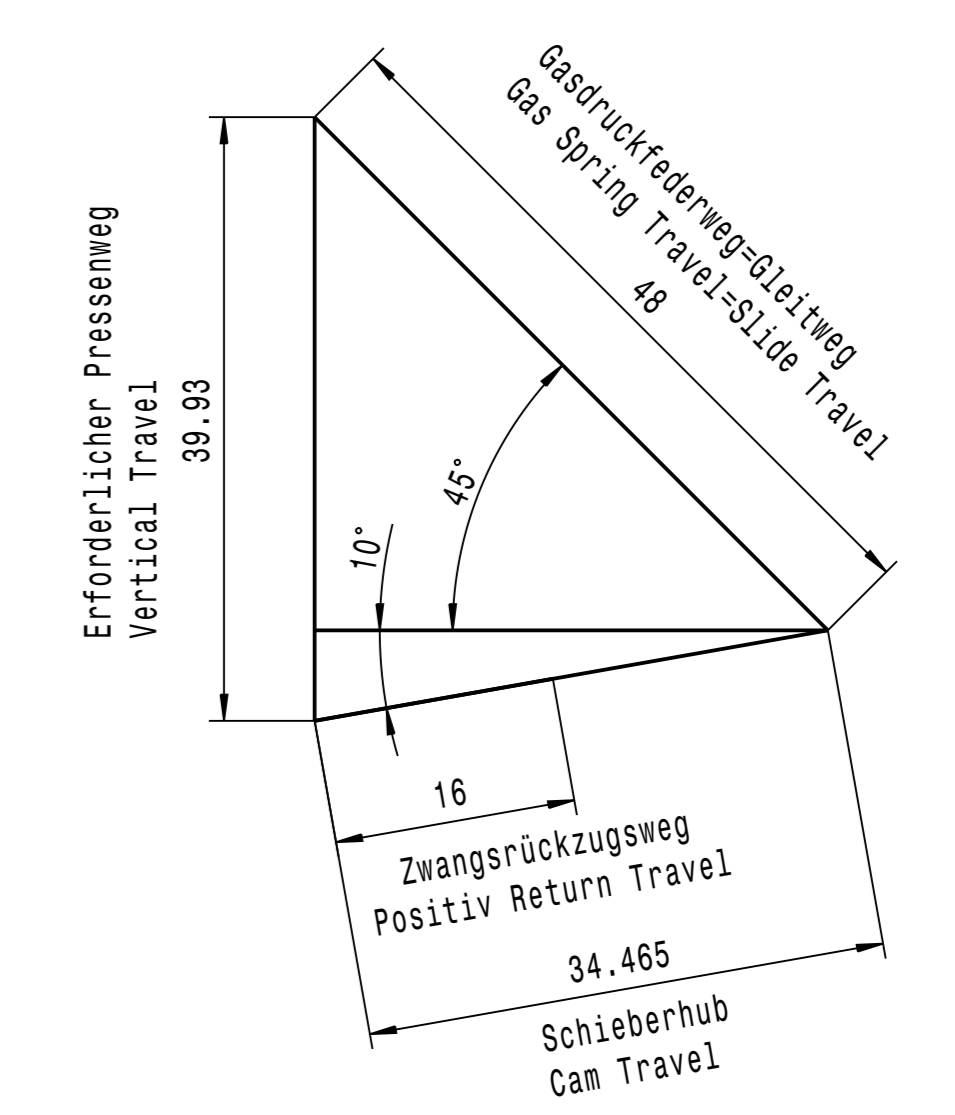
PLAN VIEW  
CAM BASE



Isometrische Ansicht  
Maßstab: 1:2



SCHIEBERDIAGRAMM  
CAM DIAGRAMM  
Maßstab 2:1



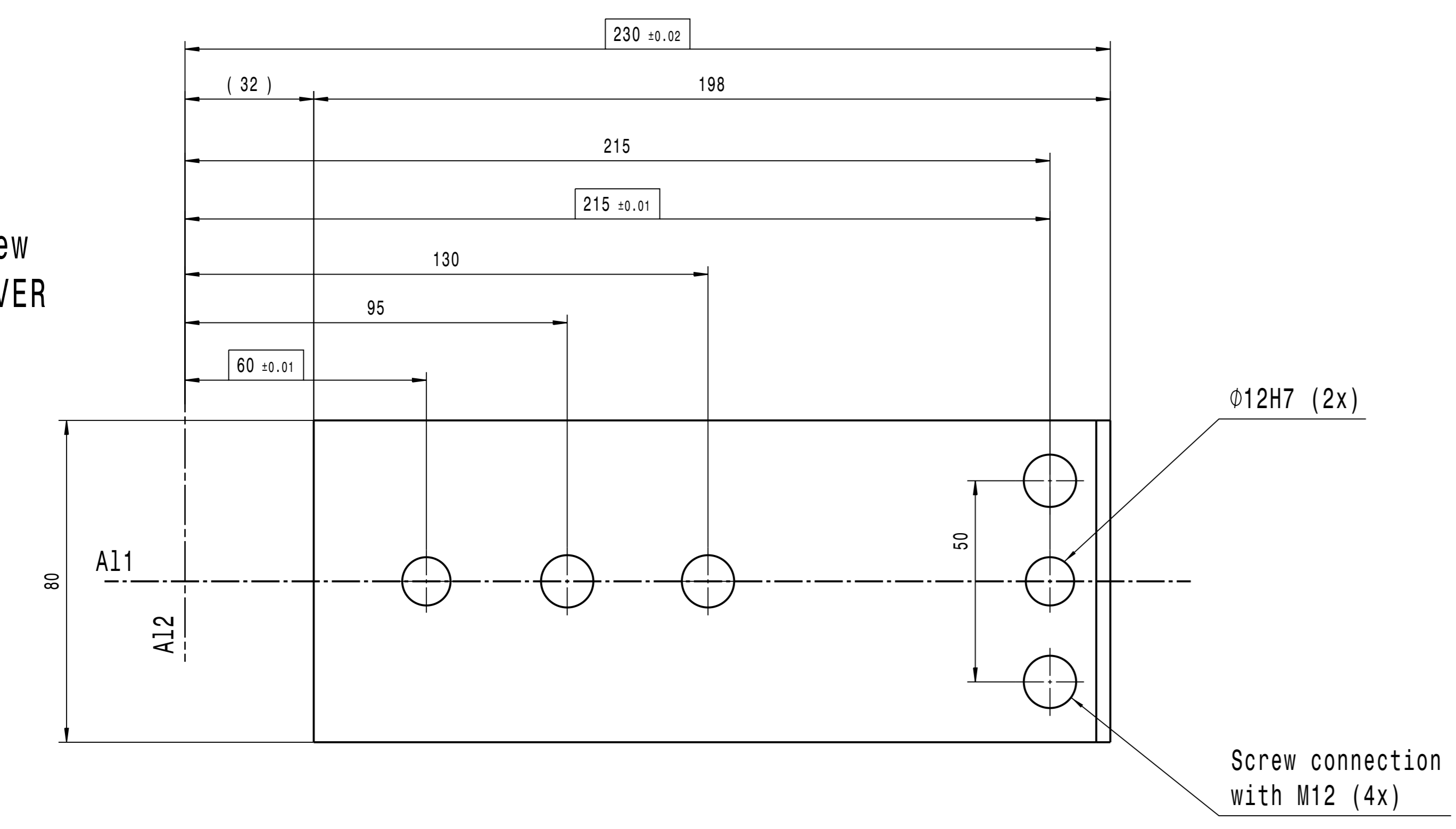
roh (√ Rz 100 √ Rz 25 √ Rz 6,3)

**Technische Daten / Specification:**  
 Schieberweg / Travel of Cam: 34,5mm  
 Arbeitsfläche / Working Face: 170x110mm  
 Gasfederrückzugskraft / Stripper Force min.: 170daN  
 oder  
 Gasfederrückzugskraft / Stripper Force min.: 300daN

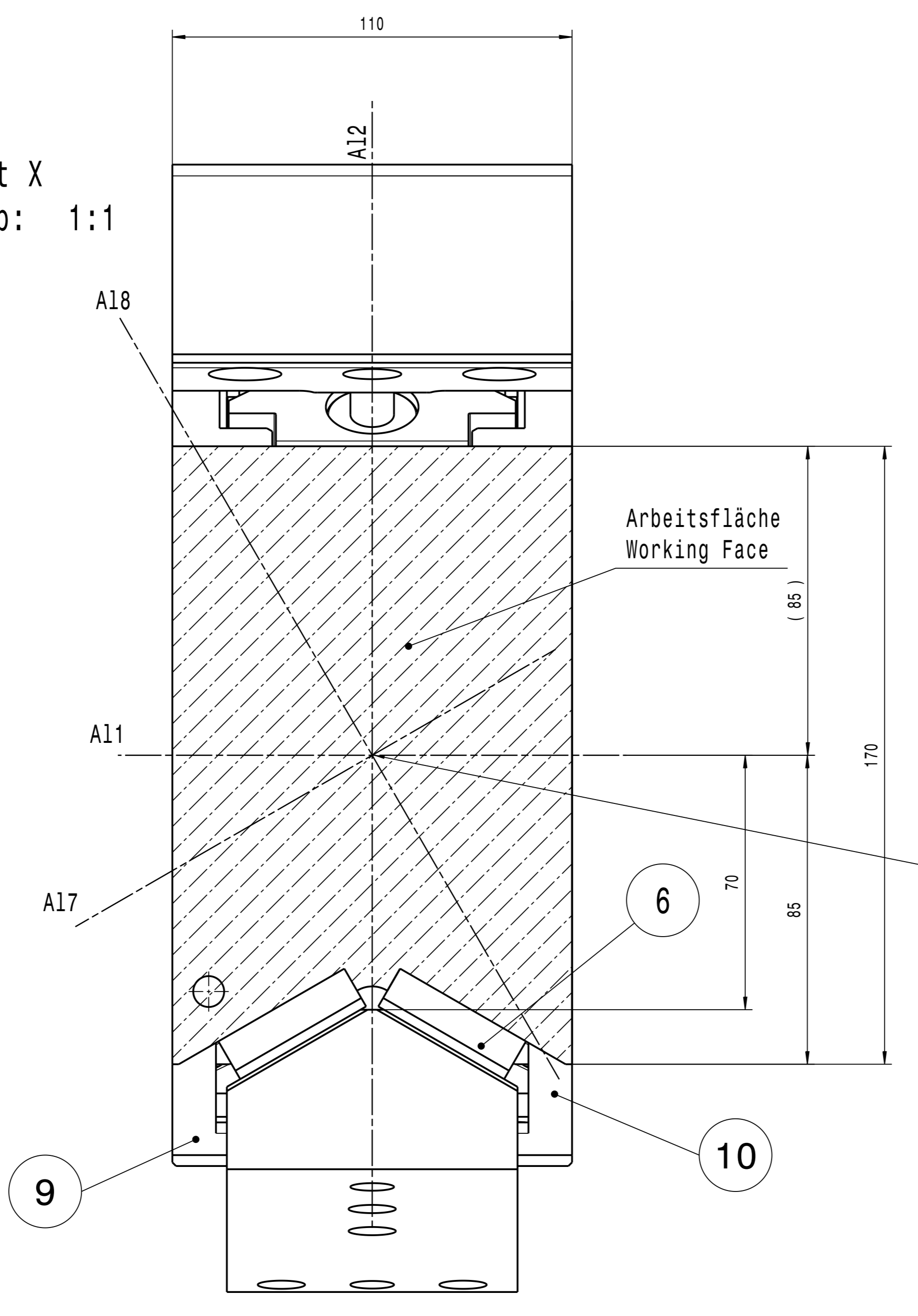
Component Parts: 23432					
Pos.-No.	Anzahl	Bezeichnung	Material	Hersteller	Id.-Nr.
1	1	Cam driver	0.7070	voestalpine	103439
2	1	Cam Slider	0.7070	voestalpine	103440
3	1	Cam Base	0.7070	voestalpine	103441
4	1	Side Plate (L)	WF 750/1A (95x200x27.5)	voestalpine	23261
5	1	Side Plate (R)	WF 750/1A (95x200x27.5)	voestalpine	23262
6	2	Wear Plate (A)	WF 750/1A (40x12x160)	voestalpine	19223
7	2	Wear Plate (B)	WF 750/1A (40x12x160)	voestalpine	19224
8	1	Gas Spring Ejector	C.180.063.SW.150 025 Hub 63 / eff 48	DADCO	101553
9	1	Positiv Return (L)	1.7225 (35x8x20)	voestalpine	105383
10	1	Positiv Return (R)	1.7225 (35x8x20)	voestalpine	105384
11	2	Damping Element	PUR(Ø10x25)	voestalpine	101498
12	1	Lock Plate	1.7225 (Ø30x6)	voestalpine	105462
13	1	Distance Tube	1.7225 (Ø24x4x36)	voestalpine	105520
14	1	Safety Plate	1.7225 (21x10x11)	voestalpine	105522
15	1	Fitting Key	1.0503.07 (22x25x100)	voestalpine	23391
16	1	Lock Out Screw	DIN 912 M10x75	voestalpine	23676
17	1	Lock Out Tube	1.7225 (Ø16x2.5x52)	voestalpine	23797
18	-	-	-	-	-
19	-	-	-	-	-
20	-	-	-	-	-
21	-	-	-	-	-
22	-	-	-	-	-

voestalpine Gießerei Linz GmbH		Revision: / Blatt: / Material: /		Sheet No.:	
08		DATE	NAME	DESCRIPTION:	Sheet No.:
07		Revised		Aerial Cam	
06		Revised		KS-OT 110-10°	23432
05		Revised		34,5 Stroke	
04		Revised		Zusammenbau	08
03	⑧	2015-07-02	SCHWER	Scale: 1:1	Index No.:
02	⑦	2008-04-23	Fontein	1:1	
01	⑥	2007-04-05	Risner		
Zu	modification	Date	Name	Drawings: KS_OT_0110_10_IN0_08_23432_HUB_34_5_2015_07_02_SCHWER	

Plan View  
CAM DRIVER



Ansicht X  
Maßstab: 1:1



Schnitt C-C  
Maßstab: 1:1

