

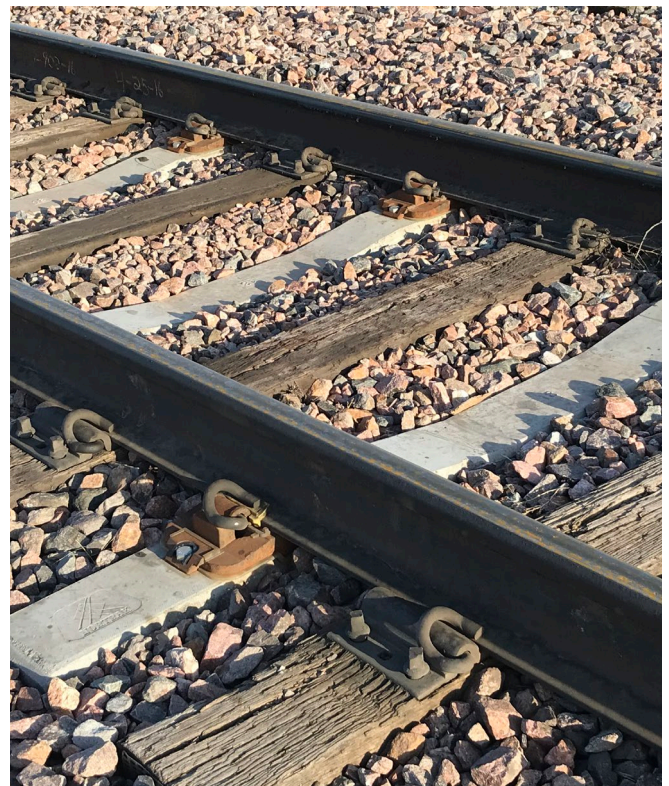


# TRANSIT KEYWAY CONCRETE CROSSTIE

## Description

The patented keyway design combines tie and fastener together in a system to provide the strength and gauge holding power of concrete with the flexibility and resiliency of wood.

- » Designed for random wood tie replacement using conventional MOW equipment
- » Allows incremental conversion from wood tie track to concrete tie track
- » Strengthens gauge holding, lateral resistance, and rail rollover resistance while allowing full wood tie asset utilization
- » Track gauge adjustable
- » Stiffness can be modified for optimal track transitions and bridge applications
- » Provides similar ballast pressures as wood tie track
- » Made with 10,000 psi compressive strength durable concrete



# TECHNICAL CHARACTERISTICS



Ties ship with plates pre-attached as shown on left.

	115RE	136RE
Length	8'6"	8'6"
Weight (with fasteners)	485 lbs	585 lbs
Track Modulus	3,000 - 4,200 lbs/in/in	
Fasteners	e-Clip, SKL, SAFELOK, other	
Concrete	>10,000 psi	
Height	6- $\frac{1}{4}$ "	7- $\frac{5}{8}$ "
Bottom Width	8- $\frac{5}{16}$ "	8- $\frac{1}{2}$ "

