

# iFIX

One Part – One Click

Photovoltaic flat roof installation system for east-west orientation

Lightning Protection and Equipotential Bonding | Page 1 / 5 | Status June 14, 2022

## LIGHTNING PROTECTION AND EQUIPOTENTIAL BONDING iFIX OST-WEST VERSION 2021

**The smart substructure  
for photovoltaic installations**

## FUNDAMENTALS

This document contains instructions regarding equipotential bonding and lightning protection for the electrical design of PV systems with the iFIX OW mounting system version 2021. All information provided here should be viewed only as a non-binding recommendation. The responsibility for the standard-compliant design of the electrical system always lies with the installation company carrying out the work or with a lightning protection planning office. Planning and execution must comply with national and local standards. We would like to point out that this recommendation was prepared on the basis of German standards. The components and system connectors used in iFIX OW have been tested for lightning current load capacity, making it easy to implement a complete, standard-compliant, external lightning protection system for the PV system. The lightning current load capacity of the iFIX OW system connectors has been verified by the accredited DEHN Test Centre, test report no. 2209\_FRM dated February 14, 2022.

## EQUIPOTENTIAL BONDING

It is generally recommended to include a PV system's components in the on-site equipotential bonding in accordance with DIN VDE 0100-712 and DIN VDE 0100-540. There must be an electrically conductive connection between all of the substructure's accessible components. The installer of the system ultimately decides whether and where equipotential bonding is necessary.

Depending on the module manufacturer's specifications, the module frames may need to be included in this equipotential bonding. Ideally, equipotential bonding should be installed so that it will continue to function when modules are removed from the layout for servicing. iFIX module center clamps and end clamps are always designed with grounding function. If equipotential bonding is required, the connectors must be at least 6 mm<sup>2</sup> copper (or equivalent).

Bild 1: Klemmen

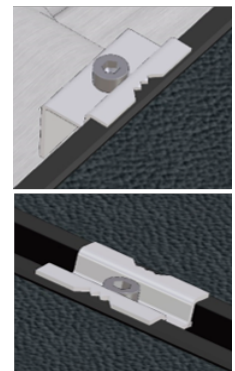
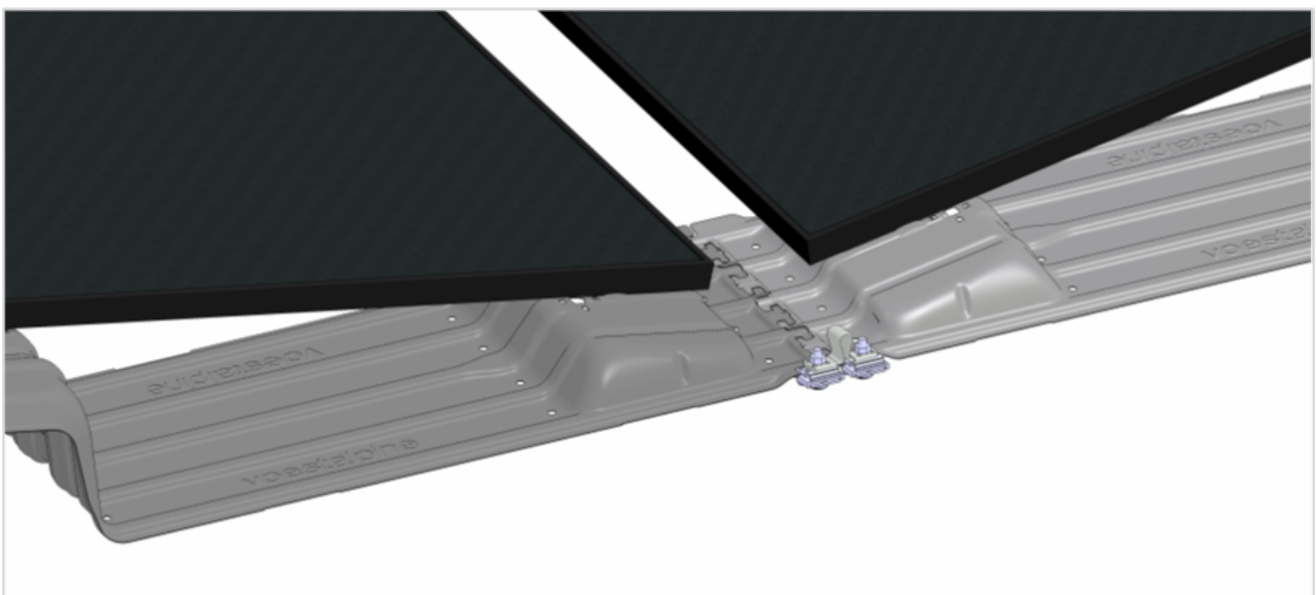


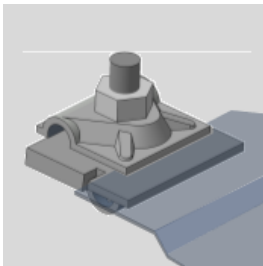
Figure 2: iFIX OW – example showing connection possibilities for equipotential bonding and lightning protection.



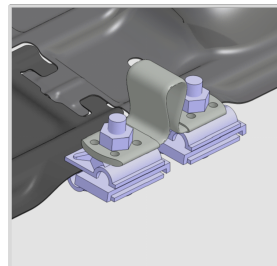
**STANDARD-COMPLIANT LIGHTNING PROTECTION OF A PV SYSTEM IN COMPLIANCE WITH SEPARATION DISTANCES**

If a PV system is to be installed on a flat roof that has an external lightning protection system, make sure that the PV system's structural elements do not impair the functioning of the lightning protection system. We recommend designing the PV system so that it can be retroactively included in the protection area of the building's lightning protection. Ideally, the minimum separation distance between the PV system and the lightning protection system should be maintained (see VDE 0185-305-3 Supplement 5). Do not shorten these separation distances at any point unless specially insulated cable runs are used where the two systems are close to each other.

Lightning current rated connector components:

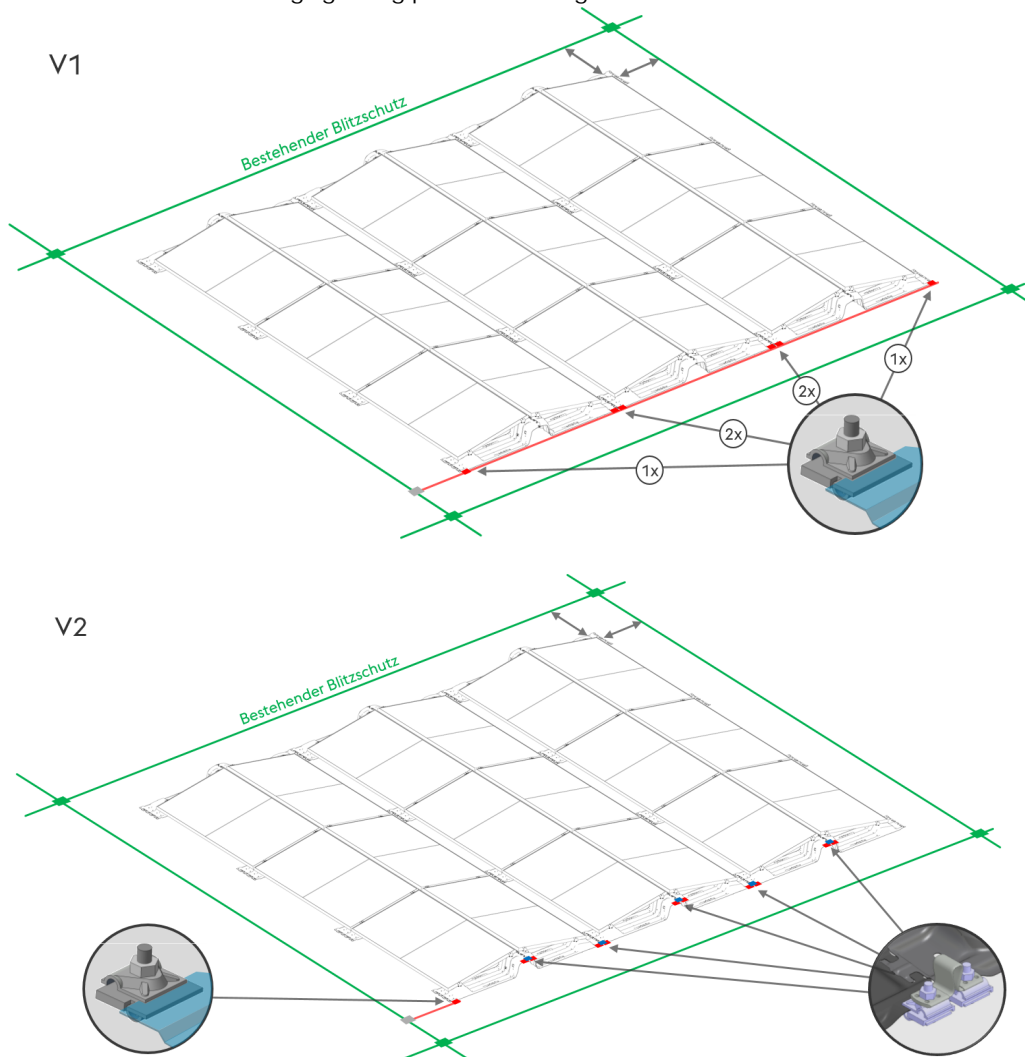


**Seam clamp**  
 from Dehn, part no. 365220, with a tightening torque of 25 Nm in combination with round aluminum wire as a lightning current arrester. The lateral flange of the iFIX OW sheet



**Bridging braid**  
 from Dehn, part no. 377015, in combination with seam clamps with a tightening torque of 25 Nm. The lateral flange of the iFIX OW sheet serves as the clamping surface.

Figure 3: Lightning protection equipotential bonding **in** compliance with separation distances  
 The examples show the equipotential bonding of the mounting system with the provided connectors and the connection to the existing lightning protection using a round wire.

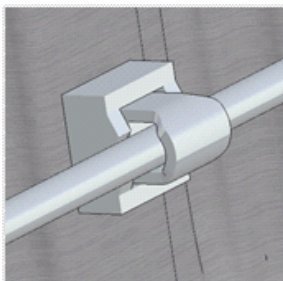


## LIGHTNING PROTECTION AND EQUIPOTENTIAL BONDING

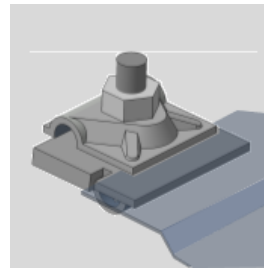
Since in this case the relevant standards require the PV system to be connected to the lightning protection system, no separation distances have to be taken into account. The substructure's internal connectors must be low-resistance connected to the lightning protection system's components at as many points as possible. Since the PV system's equipotential bonding can no longer be separated from the lightning protection equipotential bonding, all connectors must be designed with lightning current load capacity and with cross sections of at least 16 mm<sup>2</sup> copper (or equivalent).

iFIX OW 2021 meets the necessary prerequisites for this type of integrated lightning protection. The internal system connectors have been tested specifically for this application in line with the test methods in DIN EN 62561-1 (VDE 0185-561-1):2017-12, section 6.3.1 and section 6.4. Suitable connector components are available.

Lightning current rated connector components:



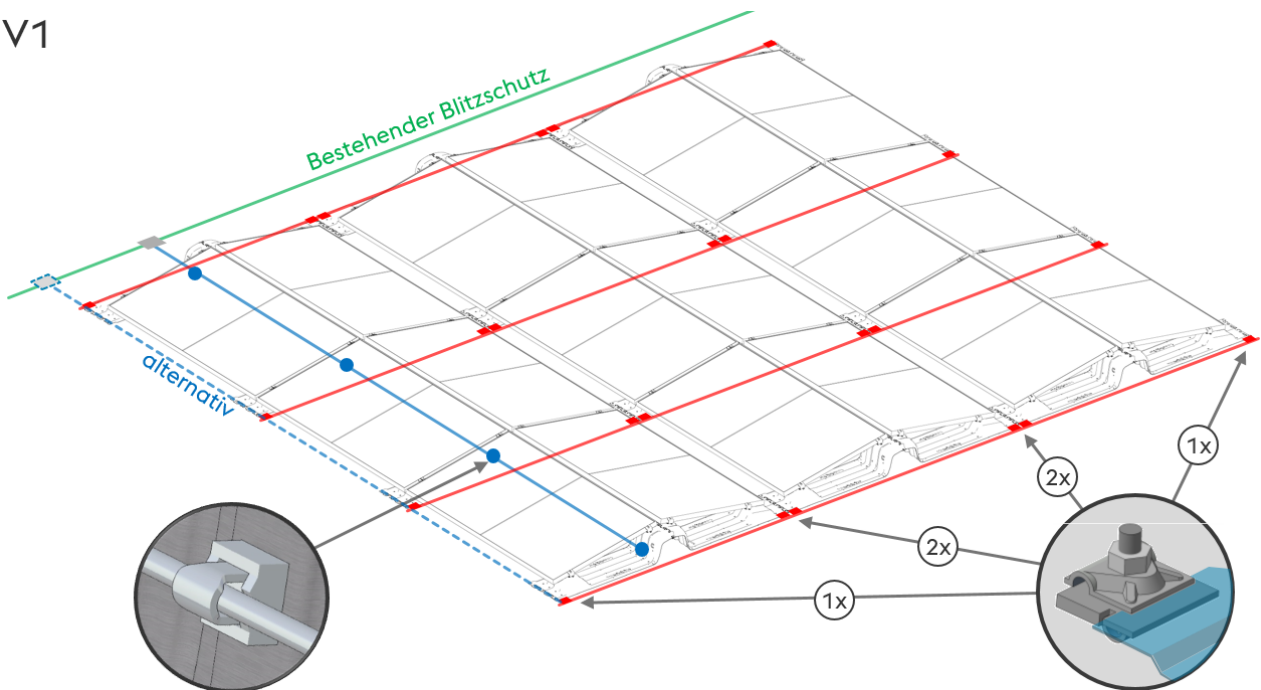
■ **Clamping screw connector** from Dehn, part no. 301000, with a tightening torque of 25 Nm in combination with round aluminum wire.



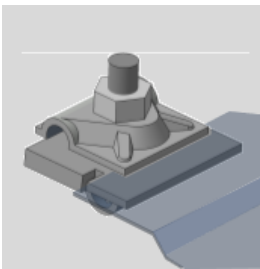
■ **Seamclamp** from Dehn, part no. 365220, with a tightening torque of 25 Nm in combination with round aluminum wire as a lightning current arrester. The lateral flange of the iFIX OW sheet serves as the

Figure 4: Lightning protection equipotential bonding **not in compliance** with separation distances  
The example shows the equipotential bonding of the mounting system with the provided connectors and the connection to the existing lightning protection using round wire.

V1

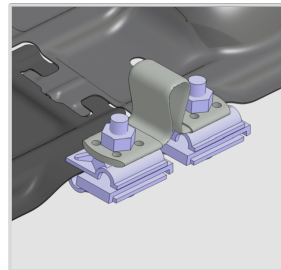


## LIGHTNING PROTECTION AND EQUIPOTENTIAL BONDING



### Seam clamp

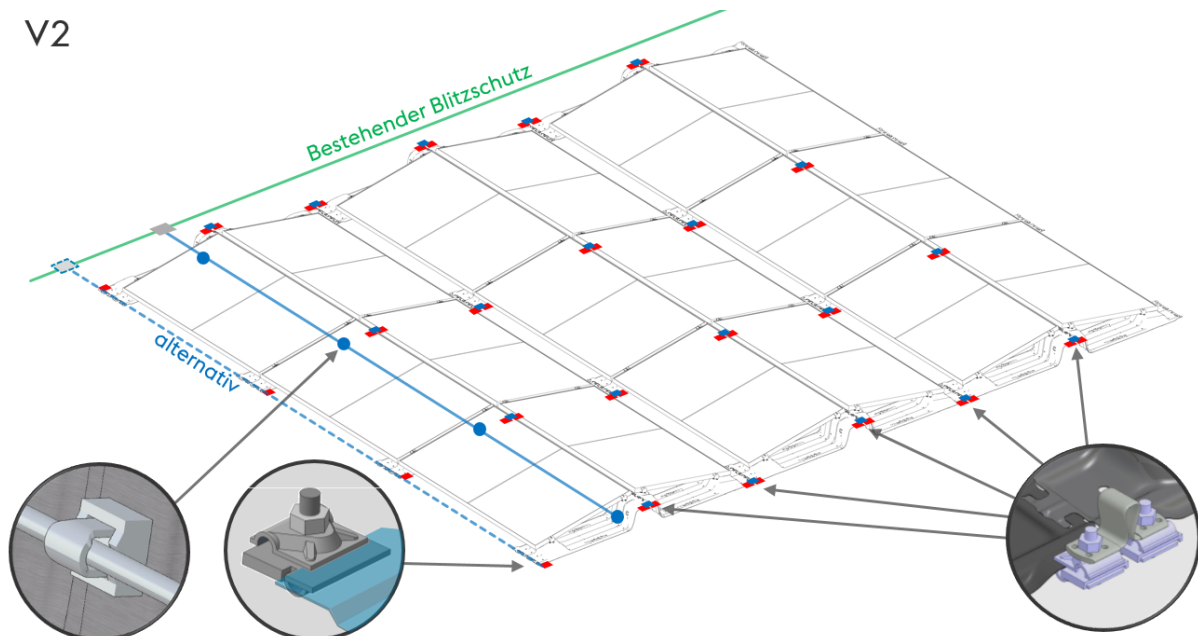
from Dehn, part no. 365220, with a tightening torque of 25 Nm in combination with round aluminum wire as a lightning current arrester. The lateral flange of the iFIX OW sheet



### Bridging braid

from Dehn, part no. 377015, in combination with seam clamps with a tightening torque of 25 Nm. The lateral flange of the iFIX OW sheet serves as the clamping surface.

Figure 5: Lightning protection equipotential bonding **not** in compliance with separation distances  
The example shows the equipotential bonding of the mounting system with the provided connectors and the connection to the existing lightning protection using round wire.



## TO BE OBSERVED

Suitable expansion elements must be provided for round wire lengths of more than 15 meters. If there are gaps in the module layout, make sure that all modules are integrated in the equipotential bonding and lightning protection. The detailed requirements regarding lightning current load capacity and the design of the arresters are described in the relevant standards. The entire wiring concept must be coordinated with a lightning protection planning office or a lightning protection specialist.

Learn more about iFIX OST-WEST and visit us at [www.voestalpine.com/iFIX](http://www.voestalpine.com/iFIX)



All information corresponds to the current state of our knowledge and experience. Paper printouts cannot be kept up to date, so please refer to the version on our website for the latest valid contents. Technical changes as well as typesetting and printing errors reserved. For detailed information, please refer to the assembly instructions.