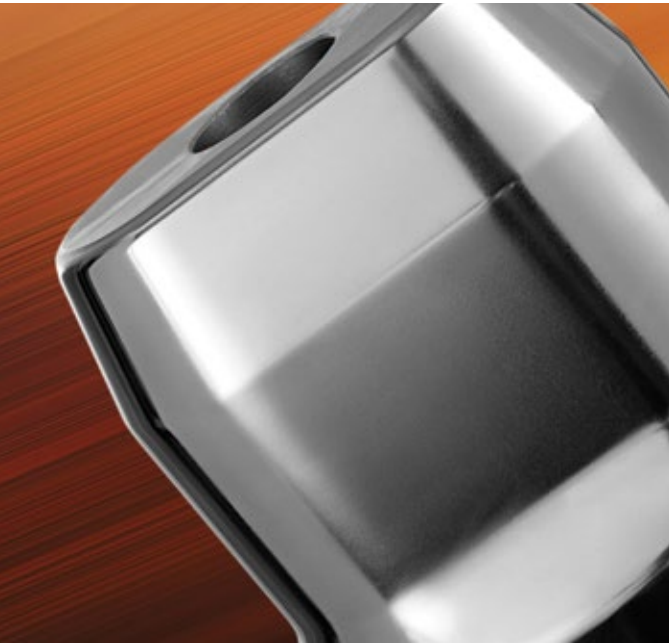




CROSAL® - PLUS  
COATING

# THE CROSAL®-PLUS ADVANTAGE



**CROSAL-plus** is voestalpine's next generation AlCrN based hard coating. This new coating system is an advanced development of our well established CROSAL coating.

As a result of optimizing process parameters to enhance the coating microstructure, this versatile high performance coating covers all key requirements:

## FEATURES OF CROSAL-PLUS

- » High Thermal Threshold
- » Excellent Wear Resistance
- » Outstanding Hot Hardness
- » Superior Coating Adhesion

## BENEFITS

In many manufacturing applications, localized extreme temperatures can be detrimental not only to the performance of tooling but also to the workpiece material and or finished product.

Our new CROSAL-plus coating meets the requirements of these demanding environments and applications due to the following features:

- » Extended Tooling and Coating Life
- » Improved Abrasion Resistance at High Temperatures
- » Increased Productivity in Demanding Applications
- » Decreased Tooling Cost

voestalpine's CROSAL-plus is deposited using our unique PVD-Arc coating process which delivers maximum adhesive strength and optimized coating smoothness.





## APPLICATIONS

CROSAL-plus is especially suited for the following applications:

### Cutting Applications

- » High Performance Cutting and Milling
- » Gear Cutting and Hobbing, Including Stick Blades
- » Dry Broaching of Tough Alloys

### Stamping/Forming Applications

- » Fine Blanking
- » Stamping and Forming
- » Hot Pressing
- » Aluminum Die Casting
- » Forging



## PROPERTIES

Material: Aluminum Chromium Nitride Based, AlCrN

Micro-hardness:  $3200 \pm 300$  HV

Maximum temperature of operation: 1100°C/2012°F

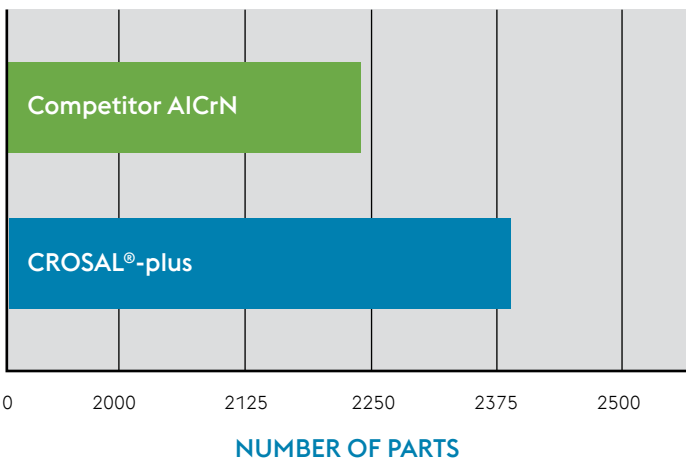
Coefficient of friction against steel: 0.45

Coating thickness: 2-5  $\mu\text{m}$

Colour: Slate-Grey



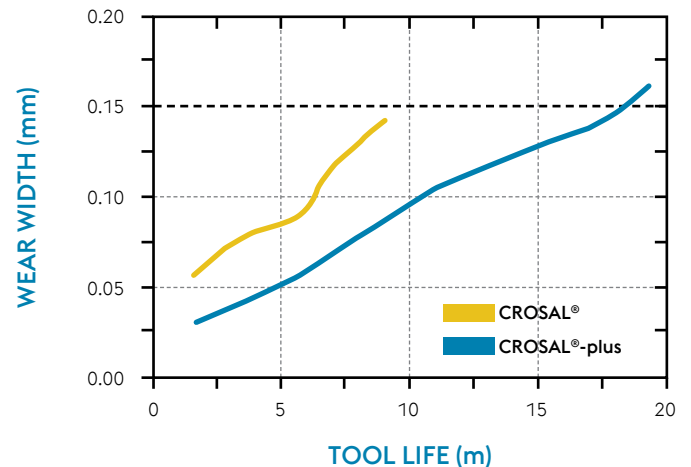
## CROSAL-PLUS PRODUCTIVITY



### Hobbing, 2-cutting technique,

PM-hob, dry, 5<sup>th</sup> speed, 16MnCr5 roughening: 180 m/min  
refining: 360 m/min

## CROSAL-PLUS TOOL LIFE



### Hard cutting in VANADIS10,

H=61HRC, CC-end mill Z=6,  $v_c=100$  m/min,  $f_z=0.07$  mm/tooth,  
 $v_f=1337$  mm/min,  $a_p=10$  mm,  $a_e=0.2$  mm

## Additional Locations:

### **voestalpine eifeler Coatings**

3800 Commerce Drive  
St. Charles, IL 60174  
T + 1 (630) 587-1220  
F + 1 (630) 587-1230  
Email: [sales@eifeler.us](mailto:sales@eifeler.us)  
[www.eifeler.us](http://www.eifeler.us)

### **voestalpine eifeler Coatings**

18687B Sheldon Road  
Middleburg Heights, OH 44130  
T + 1 (216) 658-3870  
F + 1 (216) 658-3871  
Email: [sales@eifeler.us](mailto:sales@eifeler.us)  
[www.eifeler.us](http://www.eifeler.us)

### **voestalpine eifeler Coatings**

2222 Spikes Lane  
Lansing, MI 48906  
T + 1 (517) 708-7945  
F + 1 (517) 913-6279  
Email: [sales@eifeler.us](mailto:sales@eifeler.us)  
[www.eifeler.us](http://www.eifeler.us)

### **voestalpine eifeler Coatings**

#### **A Division of voestalpine High Performance Metals, S.A. de C.V.**

Cerrada de la Noria 200  
Int A-14, Querétaro Park II,  
Parque industrial  
76220 Querétaro  
Mexico  
T + 52 (442) 349-7949  
Email: [ventas.mexico@voestalpine.com](mailto:ventas.mexico@voestalpine.com)  
[www.voestalpine.com/hpm/mexico](http://www.voestalpine.com/hpm/mexico)

### **voestalpine eifeler Coatings**

#### **A Division of voestalpine High Performance Metals Ltd.**

2645 Meadowvale Blvd.  
Mississauga, ON L5N 7Y4  
T + 1 (800) 665-8335  
F + 1 (905) 812-9231  
Email: [sales.canada@voestalpine.com](mailto:sales.canada@voestalpine.com)  
[www.voestalpine.com/hpm/canada](http://www.voestalpine.com/hpm/canada)

**voestalpine**

ONE STEP AHEAD.