



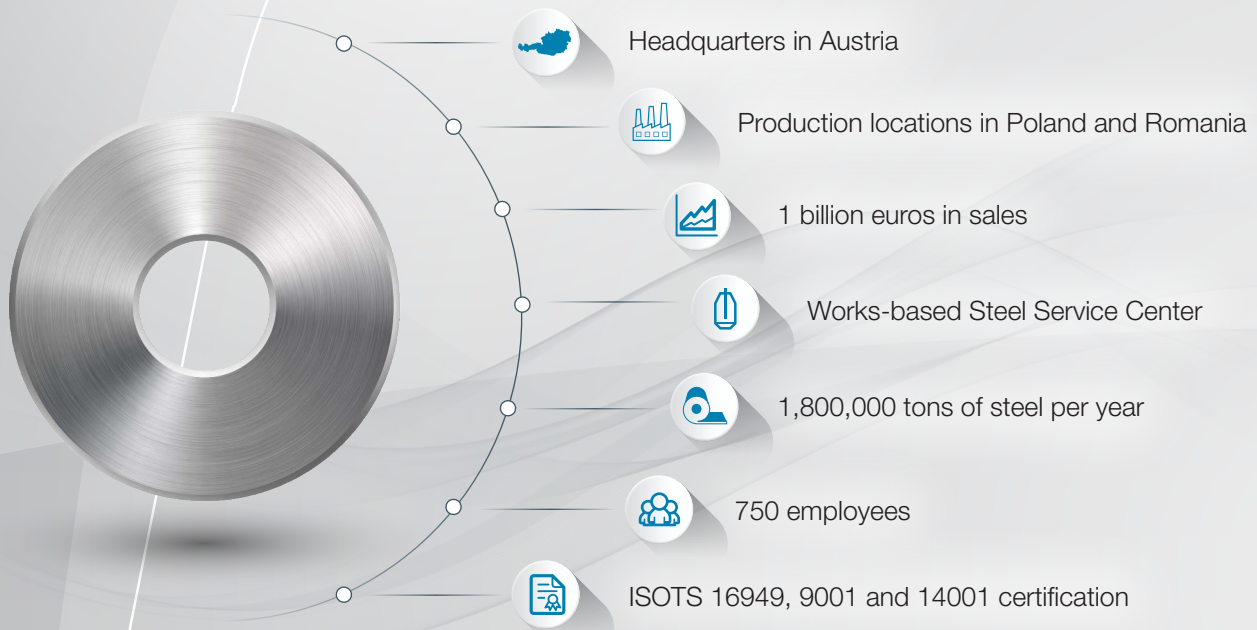
# voestalpine Steel & Service Center

voestalpine Steel & Service Center  
[www.voestalpine.com/ssc](http://www.voestalpine.com/ssc)

**voestalpine**  
ONE STEP AHEAD.

# We are a premium supplier

As a works-based SSC Group in the voestalpine Steel Division, we are the center of competence for the preprocessing of steel strip and heavy plates. Maximum security of supplies, our dedication to delivery deadlines and our proximity to the customer mean a lot to us: our solutions provide added value for our partners.



## Product and material expertise at the highest level

Being close to the integrated steelmaking plant in the Steel Division, we have unlimited access to unique product and material expertise and can provide answers to the most difficult questions.

- Heavy plate
- Hot-rolled steel strip
- Cold-rolled steel strip
- Hot-dip galvanized steel strip
- Electrogalvanized steel strip
- Electrical steel
- Organic-coated steel strip

Learn more about the broad spectrum of preprocessed steel strip and heavy plates in the voestalpine Steel & Service Center Group:  
[www.voestalpine.com/ssc](http://www.voestalpine.com/ssc)

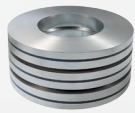




## Unique product mix and excellent service

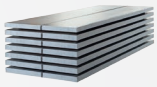
voestalpine Steel & Service Center customers can expect more: the best service for steel strip produced in the latest production facilities, heavy plate cut with oxy-fuel and plasma technologies as well as semi-cold forming for parts and weld joints for components based on specific customer requests.

Our service and logistics solutions are tailored to the individual specifications provided by our customers. Additional services such as sand blasting, weld joint preparation and packaging with edge protection beautifully round off our portfolio.



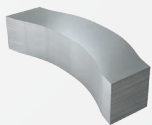
### Slit strip

We operate the most up-to-date slitting lines with inline thickness measurement, automated shear cutting and integrated packaging lines to supply high-quality slit strip.



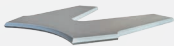
### Sheet

Cut-to-length sheets are produced on the latest cut-to-length and multi-blanking lines with high-performance stacking systems.



### Blanks

Our multi-blanking line with adjustable and exchangeable shear elements allow for us to produce highly variable trapezoid and parallelogram shapes. Additional tools make it possible to make arcs and contour shapes.



### Cut shapes

A variety of different flame cutting units are at our disposal for cutting the heavy plates, making it possible for us to produce customized shapes.



### Parts and components

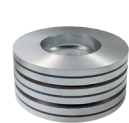
The alphas® forming brand stands for blanks made of hot-rolled steel strip that we form in a semi cold warm condition into components and then weld them together in our welding line.

# Slit strip and sheet

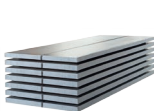
Seven slitting lines and six cut-to-length lines allow targeted solutions to meet the most specific product requirements such as especially difficult surfaces produced using specially adjusted and serviced production equipment.

## Advantages

- Broad range of products
- Wide spectrum of dimensions
- Separate production routes for difficult surfaces



Slit strip		Austria	Poland	Romania
Max. tensile strength	[MPa]	1,300	750	700
Thickness	[mm]	0.3 – 8.0	0.3 – 4.5	0.3 – 4.5
Strip width	[mm]	10 – 1,650	25 – 1,750	19 – 1,750



Sheet		Austria	Poland	Romania
Width	[mm]	300 – 2,090 <sup>1)</sup>	150 – 1,750	300 – 1,750
Length	[mm]	250 – 18,000	280 – 6,000	250 – 4,000
Thickness	[mm]	0.3 – 20	0.3 - 3.0	0.3 – 4.0

<sup>1)</sup> voestalpine feedstock: max. width 1,750 mm



## colofer®

Environmentally compatible organic-coated steel strip for individual customer requirements.

- Application-optimized products and multifunctional coatings
- Customized services and application consulting
- Increased level of quality

[www.voestalpine.com/colofer](http://www.voestalpine.com/colofer)

## alform®

A hot-rolled, high-strength steel with the best welding properties and strengths above 1,000 MPa for the highest structural integrity.

- Excellent cold formability in the high-strength range
- Excellent toughness and very good weldability
- Best profiling capacity in high-strength steel grades

[www.voestalpine.com/alform](http://www.voestalpine.com/alform)

# Cut shapes and blanks

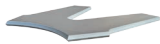
Modern torch cutting units for heavy plates and highly efficient multi-blanking lines for slit strip allow customized, precision-cut shapes.

## Advantages for cut shapes

- Customized short formats and cut shapes
- Thicknesses up to 300 mm
- Weld joint preparation

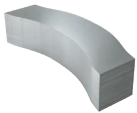
## Advantages for blanks

- Scrap optimization
- Savings in additional work steps and logistics costs
- Wide variety of shapes possible

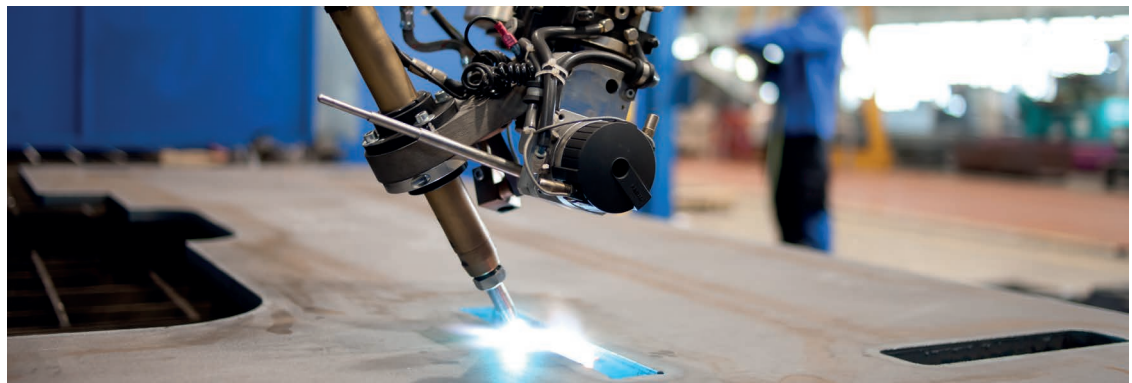


Cut shapes		Austria
Technology		Plasma, oxy-fuel and three-burner flame cutting machines
Cutting range	[mm]	8,200 x 27,000 <sup>1)</sup>
Thickness	[mm]	8 – 300

<sup>1)</sup> voestalpine Grobbleche: Standardlänge bis 16.000 mm



Blanks		Austria
Technologies and products		Shearing cuts for trapezoids, parallelograms, arcs and contour shapes
Width	[mm]	300 – 1,850
Length	[mm]	300 – 6,000
Thickness	[mm]	0.4 – 3.0
Pivot angle		± 30°



## durostat®

A direct-hardened and wear-resistant steel with the best processing properties.

- Longer service life
- Weight savings
- High degree of hardness
- Very good cold formability and good weldability

[www.voestalpine.com/durostat](http://www.voestalpine.com/durostat)

## ahss high-ductility

The benchmark for high-strength steels with exceptional forming properties and tensile strengths of 1,200 MPa and more.

- Minimum tensile strengths up to 1,180 MPa available
- Exceptional cold formability and high resistance to edge cracking
- Good weldability comparable to that of classical dual-phase and complex-phase steels
- Excellent crash behavior

# Parts and components

Our integrated annealing furnace and subsequent hydraulic press make it possible for us to produce complex parts and process components at low cost in our clock-pulse-controlled welding line.

## Advantages for parts

- Forming of heated blanks
- Steel strip thicknesses up to 12 mm
- Production of components made of high-strength steels

## Advantages for components

- Ready-to-install components available
- Savings in additional work steps and logistics costs
- More freedom of design



Parts	Austria
Plate annealing furnace	Thicknesses up to 15 mm, annealing temperature up to 750 °C
Hydraulic press	Press force: 2,000 tons, 400,000 strokes/year, table size: 3,300 x 2,500 mm



Components	Austria
Sand blasting line	Components up to 1,100 mm in width
Welding line	75,000 components/year, clock-pulse-controlled instrumentation



**alphas**® FORMING

A unique combination of high-strength, hot-rolled steel strip and semi-hot forming. This makes it possible to produce light-weight parts less expensively and generates high potentials, especially in the commercial vehicles industry.

- Efficient light-weight design and high level of reliability
- Complex shapes and new designs
- Cost reduction and functional integration

## Always close to you

The headquarters of the voestalpine Steel & Service Center Group is located right alongside one of Europe's most up-to-date steel mills, voestalpine Stahl GmbH in Linz Austria. Further production locations strengthen our position and proximity to our customers: Tychy in Poland, Giurgiu in Romania and our subsidiaries in Cittadella, Italy.

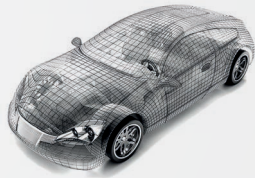
23 different voestalpine sales and distribution offices in 21 countries are pleased to be at your disposal. We are strong in Europe, and we are active worldwide!

● Production    ○ Sales offices



## For the success of our customers

We concentrate on the essential: the success of our customers. Our professional specialists provide more than 1,000 customers worldwide with the best service and advice. Our customers are among the world's best in their respective market sectors. True to our mission of remaining "one step ahead", we always want to be number one with our customers.



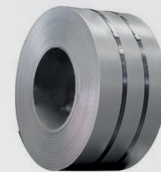
### Automotive Industry

Through years of experience and future-oriented technology developments, we set new standards for our customers in the automotive and commercial vehicles industries.



### House Industry

Our customer-specific solutions are the backbone of our decades of close partnerships with our customers.



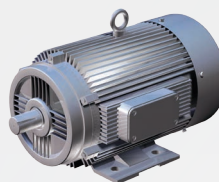
### Processing Industry

We supply our customers with tailored solutions, highest quality standards and optimized delivery strategies.



### Machinery Industry

Our products are characterized by superb processability, thus providing the perfect solutions for the specific requirements of our customers.



### Electrical Industry

As a leading quality provider of electrical steel and pole sheets for more than 50 years, we know and meet the high requirements of our customers.



## If you're reading this, your successful future has already begun.

Together with us, you are always one step ahead because we offer more than optimized products made of high-quality material.

- If you are looking for customized solutions, we will be pleased to work with you on the creation of new products and services.
- If you are looking for new ideas on materials, technologies and services, we want to help you find them.
- If you are looking for a fair and reliable partner, you are at the right place. We know that we can only be successful together with our customers when they benefit as much as we do from our partnership.
- Our customers take advantage of the most widely used technology: Two thirds of the steel produced worldwide is made using the LD process, and we're rather proud of that.

### **voestalpine Steel & Service Center GmbH**

voestalpine-Straße 3, PO Box 1119  
4020 Linz, Austria  
T. +43/50304/15-0  
ssc@voestalpine.com

### **voestalpine Steel Service Center Polska Sp. z o.o.**

ul. Oswiecimska 403  
43-100 Tychy, Poland  
T. +48/32 32 79 101  
sscpolska@voestalpine.com

### **voestalpine Steel Service Center Romania SRL**

Strada voestalpine nr. 3  
080018 Giurgiu, Romania  
T. +40/346 083 000  
sscrowania@voestalpine.com

**voestalpine**

ONE STEP AHEAD.