

colofer®

colofer® VARIO  
FOR SUPERB ARCHITECTURAL DESIGN

More than just versatile elegance

voestalpine Steel Division  
[www.voestalpine.com/colofer](http://www.voestalpine.com/colofer)

voestalpine

ONE STEP AHEAD.

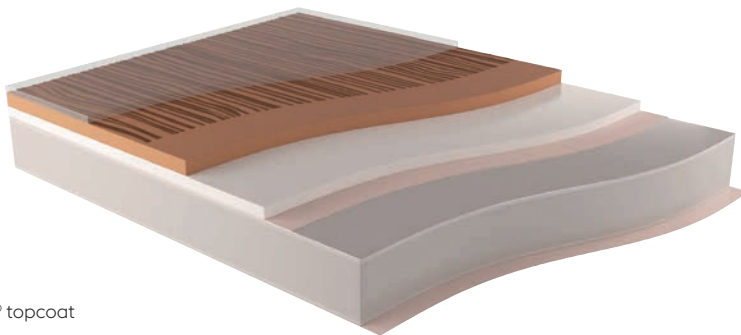


Organic-coated steel strip

# colofer®

## MORE THAN JUST VERSATILE ELEGANCE

For superb architectural design



- colofer® topcoat
- The design layer defines appearance and design
- The base coat defines the design variation
- Chromate-free primer since 1998
- Chromate-free pre-treatment since 1998
- corrender hot-dip galvanized steel strip with zinc-magnesium (ZM) coating

**Let your creativity take its course with colofer® VARIO!** The unique product unifies the advantages and processing properties of organic-coated steel strip with a variety of different appearances. Creatively design your own facades or other elements of interior and exterior design with colofer® VARIO.





To find out more about colofer®,  
please visit us at  
[www.voestalpine.com/colofer](http://www.voestalpine.com/colofer)



Eco-Pioneer



Made in Austria



colofer® Service

# SEE FOR YOURSELF WHAT colofer® VARIO CAN DO!

For superb architectural design



**If it is something special, then there is no alternative to colofer® VARIO.**

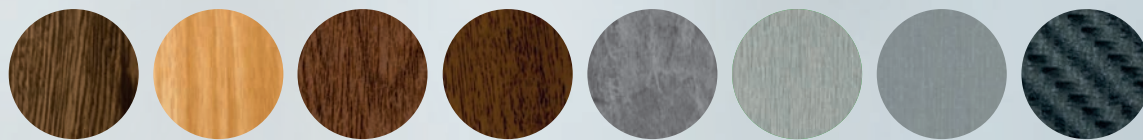
Our versatile all-rounder for indoor and outdoor applications combines aesthetics and functionality like no other product. A large variety of appearances and effects provide the basis for solutions that inspire. A variety of different wood, metal, carbon and stone effects give buildings a very special appearance. An effect that lasts for many years. Selected designs are also available with a hot-laminated film for perfect protection.

- » Roof applications
- » Wall cladding
- » For indoor and outdoor applications

colofer® complies with the following certifications and guidelines:  
EPD, DGNB, BREEAM, LEED, RoHS, REACH.

## DESIGN LINE

Page 6



Wenge 04

Zebrano 01

Golden Oak 03

New Golden  
Oak 03

Slate 01

Aluminum 02

Stainless Steel 03

Carbon 02

## UNIDECOR LINE

Page 24

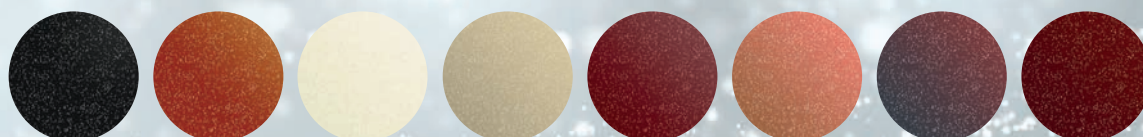


Black Oak

Grey Oak

## METALLIC LINE

Page 30

New York  
more intenseRio  
more intenseDubai  
intenseDubai  
more intenseMoskau  
intenseMoskau  
more intenseTokyo  
intenseTokyo  
more intense

## IRIDESCENT LINE

Page 32

Titanium  
GoldShiny  
JadeGolden  
PyritSmoky  
QuartzSilver  
AquamarineWhite  
DiamondCosmic  
MoonstoneSilver  
Amethyst





# DESIGN LINE WHAT ARE YOU INSPIRED BY?

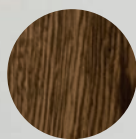
Inspired by nature and technology, convincingly authentic and versatile in its application. Design combines elegance with impressive material and processing properties.

### Also available with 3D haptics

An optional 3D effect that looks amazingly authentic in a range of different variations. Of course this is combined with the unique and convincing properties of colofer®.



## DESIGN LINE



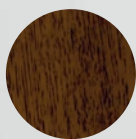
Wenge 04



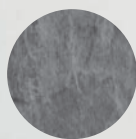
Zebrano 01



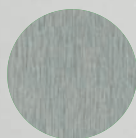
Golden Oak 03



New Golden Oak 03



Slate 01



Aluminum 02



Stainless Steel 03



Carbon 02



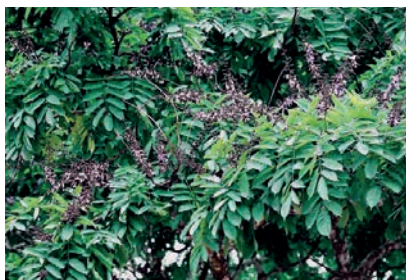
To find out more about colofer®, please visit us at [www.voestalpine.com/colofer](http://www.voestalpine.com/colofer)



# DESIGN LINE INSPIRED BY WOOD



Wenge wood is characterized by its cool and elegant appearance. The distinctive structure features a special effect and is lauded by architects for its extravagant look.



colofer® VARIO  
**WENGE**

	Outdoor applications	
	Indoor applications	
	Available in 3D haptics	
	Available with protective film	

Available      Not available      Upon request





Depicted sample: Wenge 04

 Scale 1:1



ECO-Pioneer



Made in Austria



colofer® Service

# DESIGN LINE INSPIRED BY WOOD



Zebrano wood is known for its rarity and unique grain. Its special appearance and texture make it a favored material for exclusive designs and decorative purposes.



colofer® VARIO  
**ZEBRANO**

	Outdoor applications	
	Indoor applications	
	Available in 3D haptics	
	Available with protective film	

Available      Not available      Upon request



Depicted sample: Zebrano 01

 Scale 1:1



Eco-Pioneer



Made in Austria



colofer® Service

# DESIGN LINE INSPIRED BY WOOD



Golden Oak is now a very competitive product in the area of wood design and is characterized by a friendly shade of brown. In spite of its very defined wood grain, the overall impression is not too dark and, true to its name, conveys durability as well as hardness.



colofer® VARIO

## GOLDEN OAK

	Outdoor applications	
	Indoor applications	
	Available in 3D haptics	
	Available with protective film	

Available

Not available

Upon request



Depicted sample: Golden Oak 03

 Scale 1:1



Eco-Pioneer



Made in Austria



colofer® Service

# DESIGN LINE INSPIRED BY WOOD



New Golden Oak radiates sophisticated elegance with its slightly darker brown tone and strong grain. The impression of hardness and longevity meets a particularly noble impression, which creates a dignified atmosphere.



colofer® VARIO

## NEW GOLDEN OAK

	Outdoor applications	
	Indoor applications	
	Available in 3D haptics	
	Available with protective film	

Available

Not available

Upon request



Depicted sample: New Golden Oak 03

 Scale 1:1



ECO-Pioneer



Made in Austria

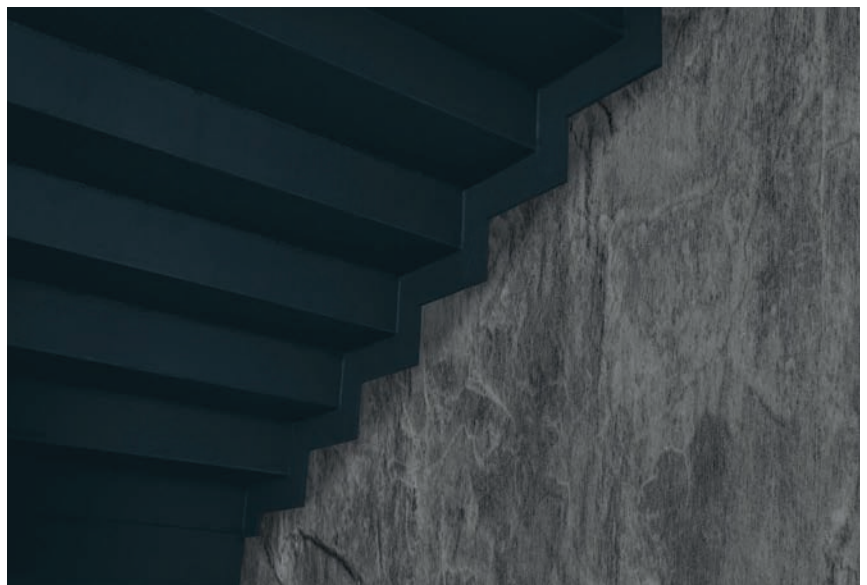


colofer® Service

# DESIGN LINE INSPIRED BY NATURE



Slate captivates with its rough, masculine surface and its naturally expressive appearance. It impresses both indoors and outdoors and – with its discreet structure – is perfectly suited for large-scale use.



colofer® VARIO  
**SLATE**

	Outdoor applications	
	Indoor applications	
	Available in 3D haptics	
	Available with protective film	

Available      Not available      Upon request





Depicted sample: Slate 01

 Scale 1:1



ECO-Pioneer



Made in Austria



colofer® Service

# DESIGN LINE INSPIRED BY TECHNOLOGY



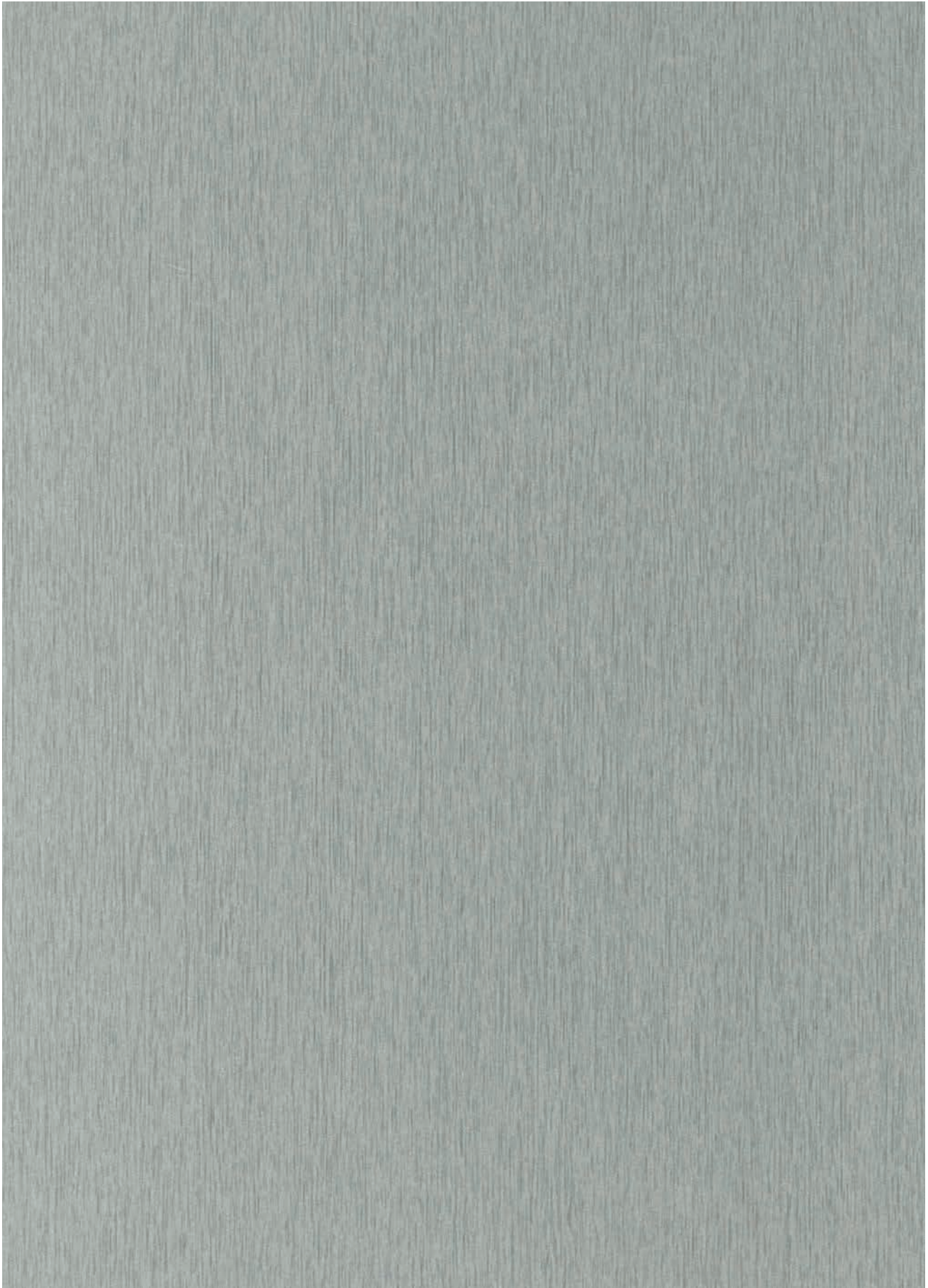
Hardly any another material stands more for lightness and longevity than aluminum. With its unmistakable appearance, it stands for modern and timeless design and is extremely popular.



colofer® VARIO  
**ALUMINUM**

	Outdoor applications	
	Indoor applications	
	Available in 3D haptics	
	Available with protective film	

Available      Not available      Upon request



Depicted sample: Aluminum 02

 Scale 1:1

# DESIGN LINE INSPIRED BY TECHNOLOGY



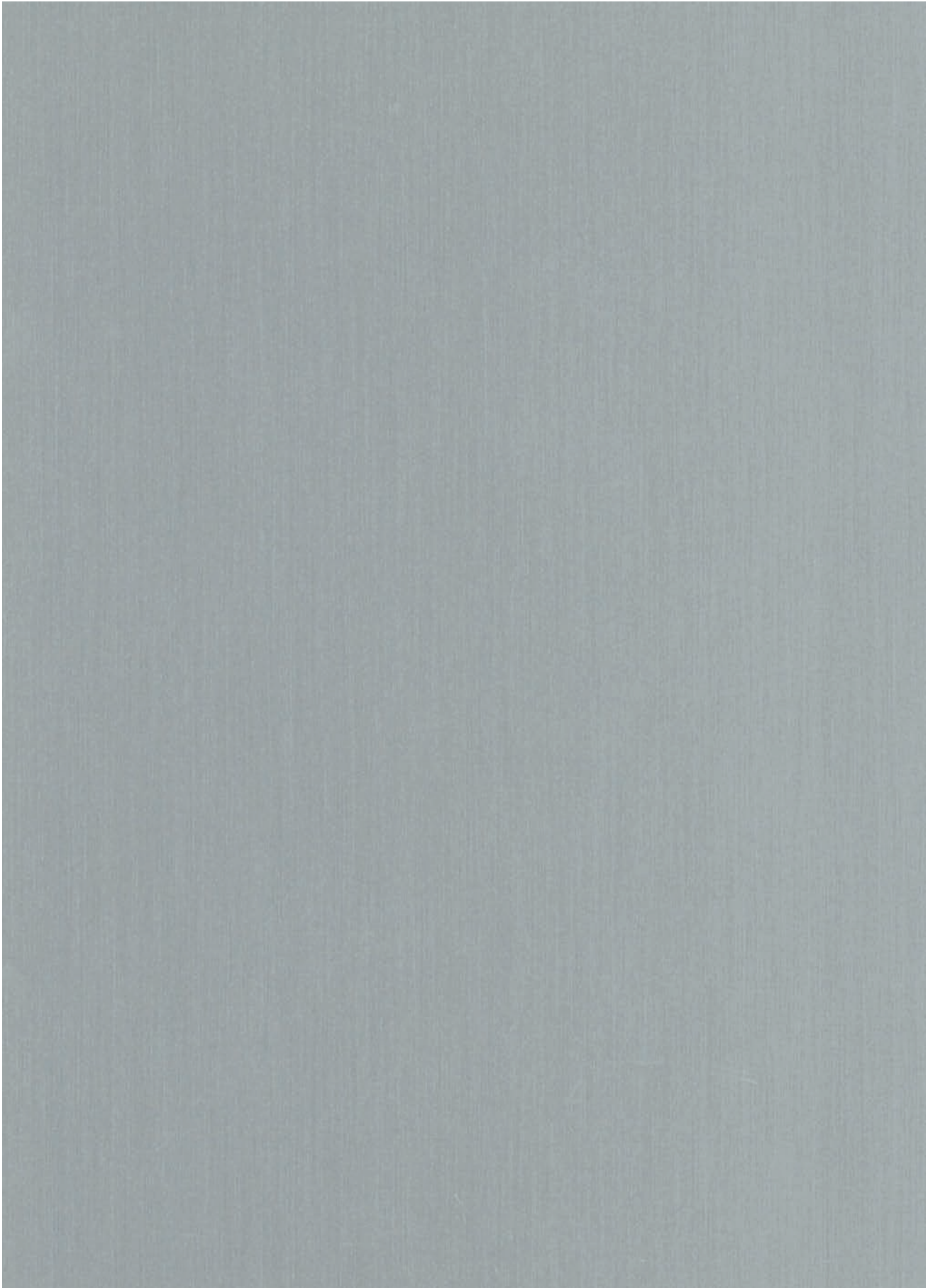
Stainless steel stands as the epitome of high quality and robustness and has a very high recognition value as a result of its unmistakable surface structure.



## colofer® VARIO STAINLESS STEEL

	Outdoor applications	
	Indoor applications	
	Available in 3D haptics	
	Available with protective film	

Available      Not available      Upon request



Depicted sample: Stainless Steel 03

 Scale 1:1

# DESIGN LINE INSPIRED BY MOTORSPORTS



As a favored material for the performance and quality demands of motorsport applications, carbon has the special look of modern high-tech character.



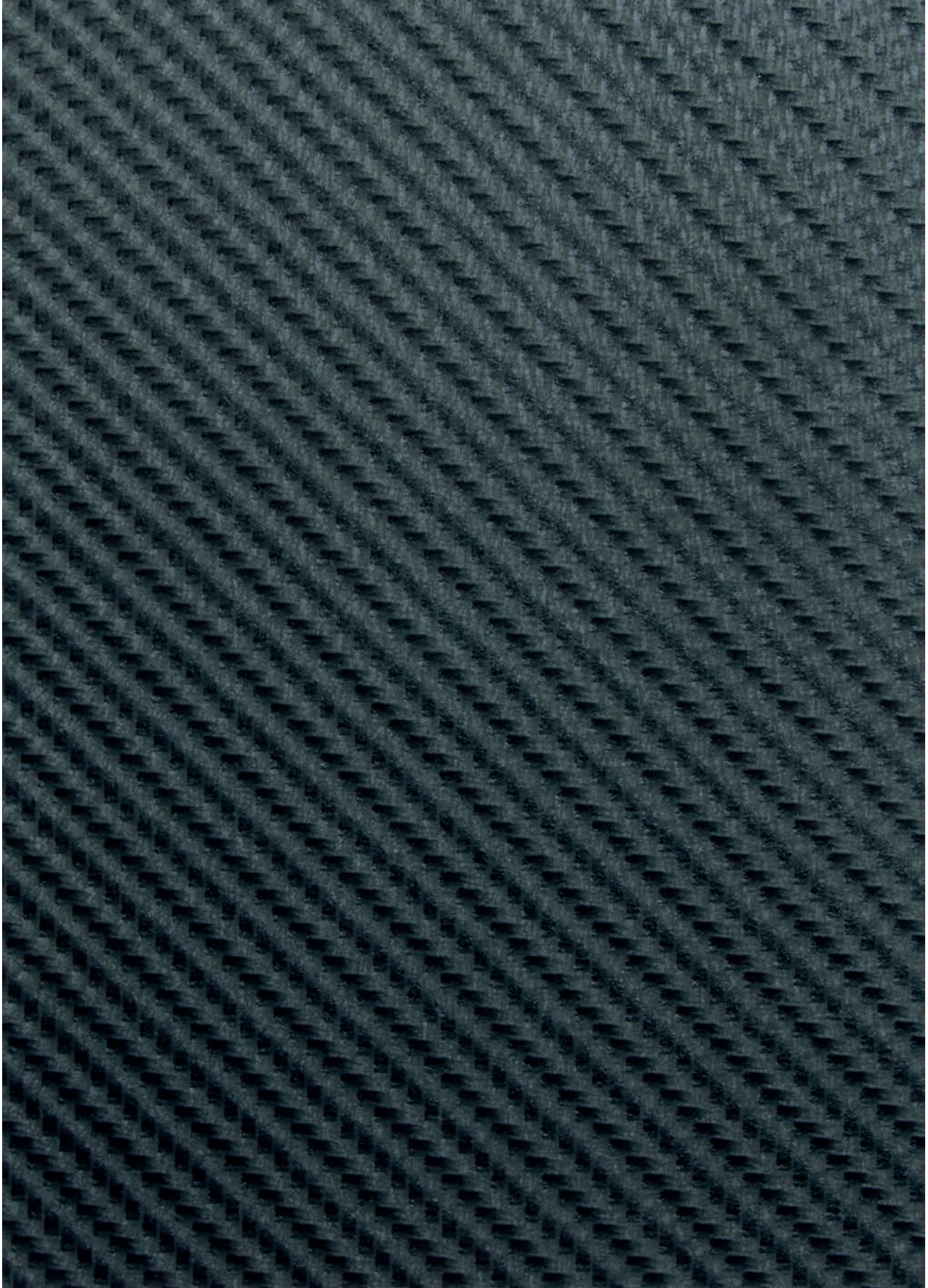
colofer® VARIO  
**CARBON**

	Outdoor applications	
	Indoor applications	
	Available in 3D haptics	
	Available with protective film	

Available

Not available

Upon request



Depicted sample: Carbon 02

 Scale 1:1



Eco-Pioneer



Made in Austria



colofer® Service





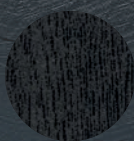
# UNIDECOR LINE WHAT ARE YOU INSPIRED BY?

**Inspired by nature and versatile in its application**, Unidecor enhances optical elegance and features impressive product and processing properties.

One of the trends of the time is the use of characteristic surface textures on a variety of different materials. Unidecor convincingly imitates these textures in different designs and combines the surface structures with modern color accents.

## UNIDECOR LINE

---



Black Oak 01



Grey Oak 01

To find out more about colofer®,  
please visit us at  
[www.voestalpine.com/colofer](http://www.voestalpine.com/colofer)



ECO-Pioneer



Made in Austria



colofer® Service

# UNIDECOR LINE INSPIRED BY WOOD



Black Oak picks up on the uniquely pronounced grain of the oak and blends it with a softly reflecting black surface. Rooms refined with Black Oak give rise to a thought: black is beautiful.



colofer® VARIO  
**BLACK OAK**

	Outdoor applications	
	Indoor applications	
	Available in 3D haptics	
	Available with protective film	

Available      Not available      Upon request



Depicted sample: Black Oak 01

 Scale 1:1



Eco-Pioneer



Made in Austria



colofer® Service

# UNIDECOR LINE INSPIRED BY WOOD



Metallic color effect paired with natural surface structure: that's Grey Oak. The characteristic grain of oak wood with its gray color supports the typically light and reduced effect of sophisticated architecture.



colofer® VARIO  
**GREY OAK**

	Outdoor applications	
	Indoor applications	
	Available in 3D haptics	
	Available with protective film	

Available      Not available      Upon request



Depicted sample: Grey Oak 01

 Scale 1:1



Eco-Pioneer



Made in Austria



colofer® Service

To find out more about colofer®,  
please visit us at  
[www.voestalpine.com/colofer](http://www.voestalpine.com/colofer)

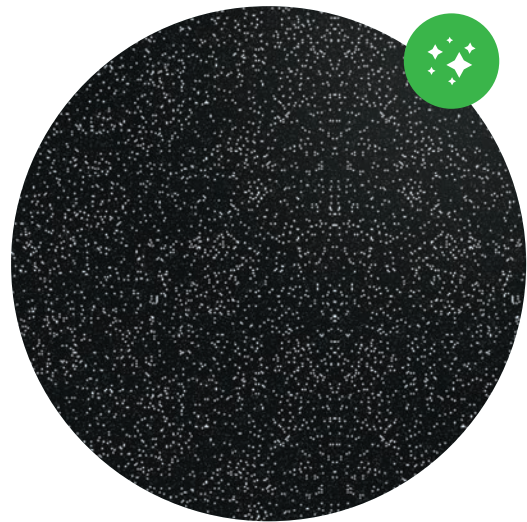


# METALLIC LINE WHAT ARE YOU INSPIRED BY?



Long a classic effect in the automotive industry, metallic coatings produce multifaceted reflections and give the impression of high value and elegance. The metallic line takes this effect many other areas of application.

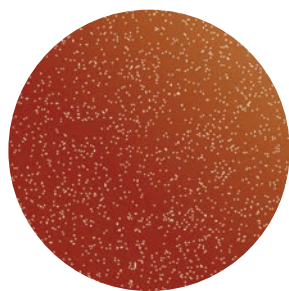
**The metallic look** is created through the use of special metal pigments that cause a glossy effect and change nuances in color shades.



## METALLIC LINE



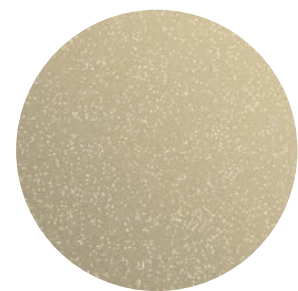
New York  
more intense



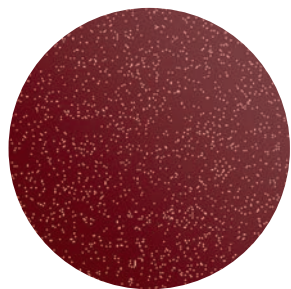
Rio  
more intense



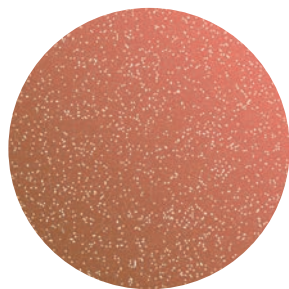
Dubai  
intense



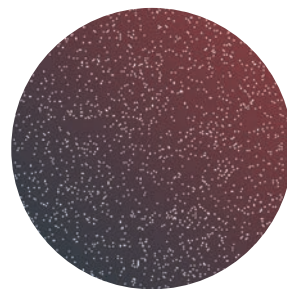
Dubai  
more intense



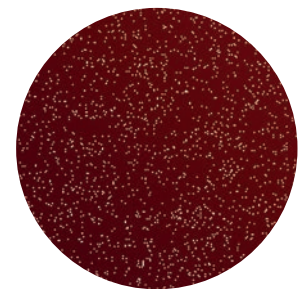
Moskau  
intense



Moskau  
more intense



Tokyo  
intense



Tokyo  
more intense



To find out more about colofer®,  
please visit us at  
[www.voestalpine.com/colofer](http://www.voestalpine.com/colofer)





# IRIDESCENT LINE WHAT ARE YOU INSPIRED BY?

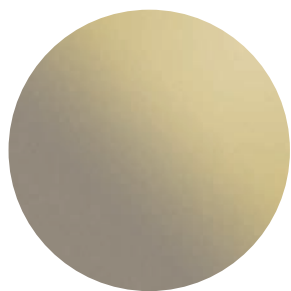


One material, a range of colors. The colofer® iridescent line always focuses on the optical effect.

**Is it real or magic?** An impressive optical phenomenon is caused by light diffraction on the surface coating. Depending on the angle of view, the surface colors vary and create an surprising nuances.



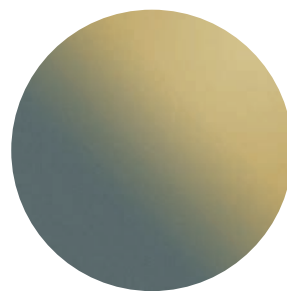
## IRIDESCENT LINE



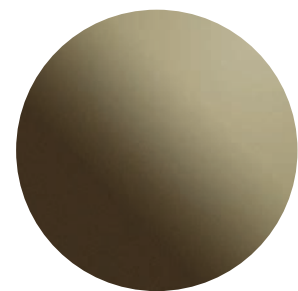
Titanium  
Gold



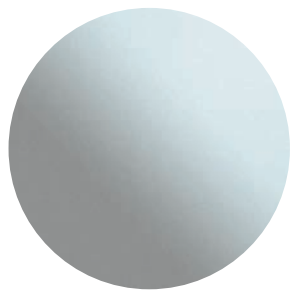
Shiny  
Jade



Golden  
Pyrit



Smoky  
Quartz



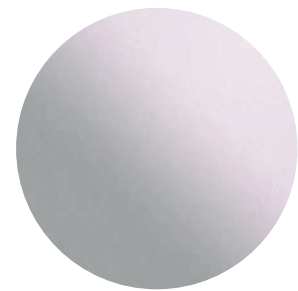
Silver  
Aquamarine



White  
Diamond



Cosmic  
Moonstone



Silver  
Amethyst



# MORE THAN JUST ORGANIC COATED STEEL STRIP

For superb architectural design

**colofer® is much more than just organic-coated steel strip.** colofer® is an inspiring product that creates added value for customers, which translates into superior quality and performance along the entire value chain.



Learn more about our colofer® services in this video.  
[www.voestalpine.com/colofer/en/Service/colofer-R-Service](http://www.voestalpine.com/colofer/en/Service/colofer-R-Service)



# colofer® ADDED VALUE

IT'S THE INNER VALUES THAT  
COUNT! THEY MAY NOT BE  
APPARENT AT FIRST GLANCE  
BUT ARE NEVERTHELESS HARD  
TO OVERLOOK ON CLOSER  
INSPECTION.



## More than just environmentally compatible – The ECO-Pioneer

colofer® is a true pioneer when it comes to protecting the environment and employee health and safety. Already in 1998, voestalpine developed an environmentally compatible method for the production of colofer® by completely eliminating chromate from the process without compromising the excellent product performance and the length of guarantee periods.

voestalpine operates one of the cleanest and most environmentally compatible steelmaking plant in Europe and has already won the Green Brands Austria award. Additionally, it was given the title of a Steel Sustainability Champion, more than justifying its reputation as an environmental pioneer.



## More than just quality – High Quality made in Austria

Our high-tech steel strips and paints from renowned European manufacturers are the basis for the consistently high level of quality that is characteristic of colofer®. Thanks to our integrated steel mill at the Linz location, we always have full control of all value-adding process steps involved. colofer® is produced in a single facility using high-precision measuring methods. As a result, our customers benefit from consistently high quality and from products that strictly comply with the agreed specifications.



## More than just products – colofer® Service

We consider services to be part of the product itself, which is why we also strive for perfection in our services. Learn more about our colofer® services!

- » colofer® technical support
- » colofer® colorservice
- » colofer® coilsplitting
- » colofer® ROL
- » colofer® inside
- » voestalpine Steel & Service Center

The information and product properties contained in this printed material are non-binding and serve the sole purpose of technical orientation. They do not replace individual advisory services provided by our sales and customer service teams. The product information and characteristics set forth herein shall not be considered as guaranteed properties unless explicitly stipulated in a separate contractual agreement. For this reason, voestalpine shall not grant any warranty nor be held liable for properties and/or specifications other than those subject to explicit agreement. This also applies to the suitability and applicability of products for certain applications as well as to the further processing of materials into final products. All application risks and suitability risks shall be borne by the customer. The General Terms of Sale for Goods and Services of the voestalpine Steel Division shall apply to all materials supplied by the voestalpine Steel Division and can be accessed using the following link: [www.voestalpine.com/stahl/en/The-Steel-Division/General-Terms-of-Sale](http://www.voestalpine.com/stahl/en/The-Steel-Division/General-Terms-of-Sale)

Technical changes are reserved. Errors and misprints are excepted. No part of this publication may be reprinted without explicit written permission by voestalpine Stahl GmbH.



