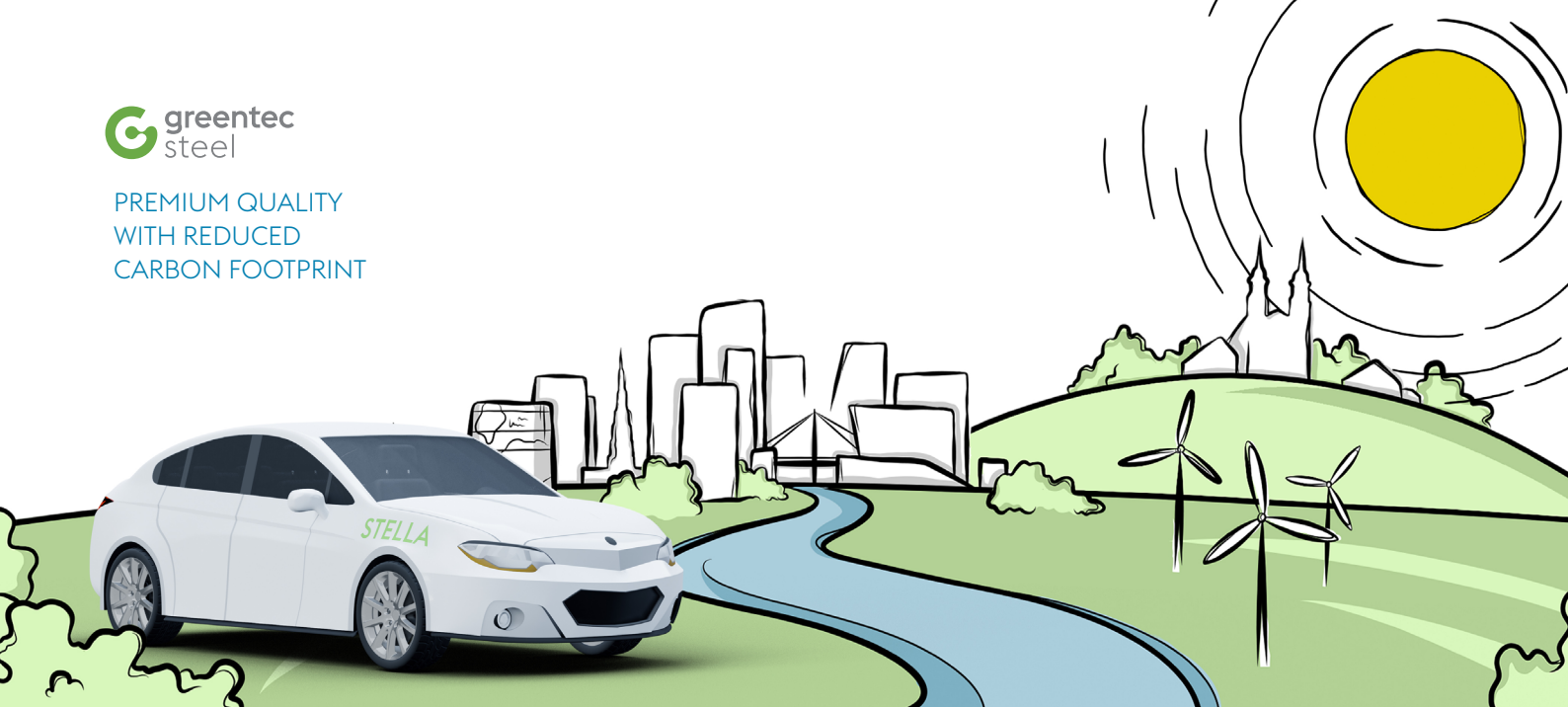




PREMIUM QUALITY
WITH REDUCED
CARBON FOOTPRINT



greentec steel

Sustainable voestalpine premium quality with reduced carbon footprint

Ten percent of the direct carbon emissions at the Linz site are avoided through process-optimized operation in the production of greentec steel.

Using a balance model, these saved emissions are allocated to the flat steel products supplied by the voestalpine Steel Division.

The material and processing properties of the steel are not affected in any way by the carbon-reduced production route.

Each high-quality voestalpine steel strip product is available with its unique profile of benefits and a reduced carbon footprint.

Convincing advantages:

- » Reduced specific carbon footprint
- » Reduced Scope 3 emissions at the customer
- » Individually adjusted carbon footprint based on a verified balance model
- » Unchanged range of grades and dimensions in proven voestalpine premium quality.
- » No change in material and processing properties because the chemical analysis and mechanical profiles remain unchanged.

Product carbon footprint in detail

Product greentec steel edition*	Carbon footprint or global warming potential [kg CO ₂ e per kg of steel]**
Hot-rolled steel strip	2.10
Cold-rolled steel strip	2.15
Hot-dip galvanized steel strip	2.30
Electrogalvanized steel strip	2.40
isovac® - Semi-processed electrical steel	2.30
isovac® - Fully processed electrical steel	2.45
colofer® - Organic-coated steel strip	2.40
Heavy plates (excl. heads and clad plates)	2.40

*All products, dimensions and grades in the product range are available as greentec steel edition.
 **acc. to worldsteel CML 2001-2016 (system expansion) cradle to gate

Verification of historical data

- » Data and balance model validated by Lloyd's Register based on EN-ISO 14064-2
- » Consideration of direct emissions and indirect emissions

Method of calculation

Determination of carbon footprint (cradle to gate)

- » Method pursuant to EN15804 A2, Environmental Product Declaration (EPD)
- » Method pursuant to worldsteel CML 2001-2016

How is the carbon footprint reduced?

- » Production optimized with respect to carbon emissions (blast furnace route)
- » Utilization of green electricity purchased from third parties

Join us on our journey to a greener future!

Additional carbon savings achieved during the year can also be purchased.

Sustainability does not end in production

- » Utilization of environmentally friendly transport modes and routes
- » Sustainable and high-precision packaging

More detailed information on sustainability

- » <https://www.voestalpine.com/greentecsteel>
- » <https://www.voestalpine.com/stella/>

The information and product properties contained in this printed material are non-binding and serve the sole purpose of technical orientation. They do not replace individual advisory services provided by our sales and customer service teams. The product information and characteristics set forth herein shall not be considered as guaranteed properties unless explicitly stipulated in a separate contractual agreement. For this reason, voestalpine shall not grant any warranty nor be held liable for properties and/or specifications other than those subject to explicit agreement. This also applies to the suitability and applicability of products for certain applications as well as to the further processing of materials into final products. (All application risks and suitability risks shall be borne by the customer.) The General Terms of Sale for Goods and Services of the voestalpine Steel Division apply to all deliveries and can be accessed at <https://www.voestalpine.com/stahl/en/General-Terms-of-Sale>.

Technical changes reserved. Errors and misprints excepted. No part of this publication may be reprinted without explicit written permission by voestalpine Stahl GmbH.



Please find further information and downloadable files at www.voestalpine.com/stella



voestalpine Stahl GmbH
 voestalpine-Straße 3
 4020 Linz, Austria
productmanagement@voestalpine.com
www.voestalpine.com/stella

voestalpine
 ONE STEP AHEAD.